

Monsters & Myths: Surrealism and War in the 1930s and 1940s



1



2



3



4



5



6



7



8



9



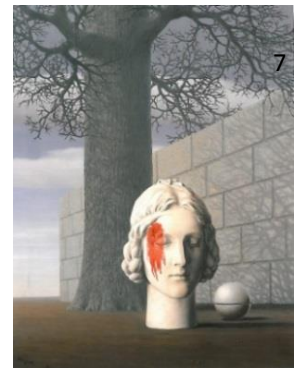
10



11



12



13



14

1. Pablo Picasso. *Minotauromachy*. 1935. 2. Salvador Dalí. *Soft Construction with Boiled Beans (Premonition of Civil War)*. 1936. 3. André Masson. *The Barbarians*. 1937. 4. André Masson. *There Is No Finished World*. 1942. 5. Max Ernst. *Europe After the Rain II*. 1940-42. 6. Joan Miró. *Summer*. 1938. 7. André Masson. *Tauromachy*. 1937. 8. Hans Bellmer. *The Doll*. 1935. 9. Kurt Seligmann. *Phantom of the Past*. 1942. 10. Maria Martin. *The Two Sacred Ones*. 1942. 11. Mark Rothko. *The Syrian Bull*. 1943. 12. Dorothea Tanning. *The Temptation of Saint Anthony*. 1945/46. 13. René Magritte. *Les Intermittences des Coeur*. 1950. 14. Luis Buñuel. Still from *Un Chien Andalou*. 1929.

Monsters & Myths: Surrealism and War in the 1930s and 1940s

Image Captions

1. Pablo Picasso. *Minotauromachy*. 1935. The Baltimore Museum of Art: Gift of Israel and Selma Rosen, Baltimore, BMA 1979.72. © Estate of Pablo Picasso / Artists Rights Society (ARS), New York
2. Salvador Dalí. *Soft Construction with Boiled Beans (Premonition of Civil War)*. 1936. Philadelphia Museum of Art: The Louise and Walter Arensberg Collection, 1950 © Salvador Dalí, Fundació Gala-Salvador Dalí, Artists Rights Society
3. Max Ernst. *The Barbarians*. 1937. Lent by The Metropolitan Museum of Art, Jacques and Natasha Gelman Collection, 1998 (1999.363.21). © Artists Rights Society (ARS), New York / ADAGP, Paris
4. André Masson. *There Is No Finished World*. 1942. The Baltimore Museum of Art: Bequest of Saidie A. May, BMA 1951.333. © Artists Rights Society (ARS), New York / ADAGP, Paris
5. Max Ernst. *Europe after the Rain II*. 1940-42. The Wadsworth Atheneum Museum of Art: The Ella Gallup Sumner and Mary Caitlin Sumner Collection Fund, 1942.281 © Artists Rights Society (ARS), New York / ADAGP, Paris
6. Joan Miró. *Summer*. 1938. The Baltimore Museum of Art: Bequest of Saidie A. May, BMA 1951.341. © Successió Miró / Artists Rights Society (ARS), New York / ADAGP, Paris
7. André Masson. *Tauromachie*. 1937. The Baltimore Museum of Art: The Cone Collection, formed by Dr. Claribel Cone and Miss Etta Cone of Baltimore, Maryland, BMA 1950.349. © Artists Rights Society (ARS), New York / ADAGP, Paris
8. Hans Bellmer. *The Doll*. 1935. Ubu Gallery, New York and Gallerie Berinson, Berlin © Artists Rights Society (ARS), New York / ADAGP, Paris
9. Kurt Seligmann. *Phantom of the Past*. 1942, published 1943 from the *VVV Portfolio*. The Baltimore Museum of Art: Gift of Saidie A. May, BMA 1948.54.10. © Artists Rights Society (ARS), New York / ADAGP, Paris
10. Maria Martins. *The Two Sacred Ones*. 1942. The Baltimore Museum of Art: Anonymous Gift, BMA 1945.34. © Estate of Maria Martins
11. Mark Rothko. *The Syrian Bull*. 1943. The Baltimore Museum of Art: Allen Memorial Art Museum, Oberlin, OH. Gift of Annalee Newman in honor of Ellen H. Johnson, 1991.41.1 © 1998 Kate Rothko Prizel & Christopher Rothko / Artists Rights Society (ARS), New York
12. Dorothea Tanning. *The Temptation of Saint Anthony*. 1945/46. Private Collection © Artists Rights Society (ARS), New York / ADAGP, Paris
13. René Magritte. *The Fickleness of the Heart*. 1950. The Wadsworth Atheneum Museum of Art: Gift of Tanaquil Le Clercq and George Balanchine, 1998.48.10 © C. Herscovici / Artists Rights Society (ARS), New York
14. Luis Buñuel and Salvador Dalí. Still from *Un Chien Andalou*. © Les grands Films Classiques, Paris, 1929