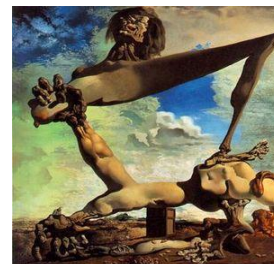


Salvador Dalí (Spanish, 1904–1989)
Soft Construction with Boiled Beans (Premonition of Civil War), 1936
 Oil on canvas
 39 5/16 x 39 3/8 in. (99.9 x 100 cm)
 Philadelphia Museum of Art, The Louise and Walter
 Arensberg Collection, 1950 (1950-134-41)



MYTHOLOGY AND THE MINOTAUR

Giorgio de Chirico (Italian, born Greece, 1888–1978)
The Endless Voyage, 1914
 Oil on canvas
 34 15/16 x 15 1/16 in. (88.7 x 38.3 cm)
 Wadsworth Atheneum Museum of Art, Hartford, CT,
 The Philip L. Goodwin Collection, Gift of James L. Goodwin,
 Henry Sage Goodwin, and Richmond L. Brown
 (1958.221)



Giorgio de Chirico (Italian, born Greece, 1888–1978)
Reclining Abstract Figure, 1926–27
 Conté crayon on wove paper
 11 1/16 x 18 in. (28.1 x 45.7 cm)
 The Baltimore Museum of Art: Gift of Saidie A. May
 (BMA 1935.13.1)



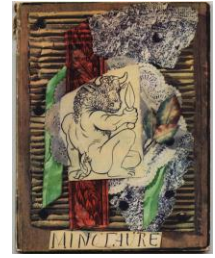
Pablo Picasso (Spanish, 1881–1973)
Minotauromachy, 1935
 Etching on cream laid paper
 22 7/16 x 30 9/16 in. (57 x 77.6 cm)
 The Baltimore Museum of Art: Gift of Israel and Selma Rosen, Baltimore
 (BMA 1979.72)



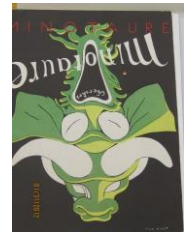
Pablo Picasso (Spanish, 1881–1973)
Blind Minotaur Guided through a Starry Night by Marie-Thérèse with a Pigeon
 1934, published as plate 97 of the *Vollard Suite* in 1939
 Aquatint with burnishing, drypoint, and engraving on cream laid paper
 13 3/8 x 17 7/16 in. (34 x 44.3 cm)
 The Baltimore Museum of Art: Gift of Mr. and Mrs. Albert Lion
 (BMA 1959.165)



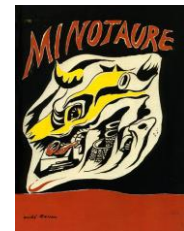
Pablo Picasso (Spanish, 1881–1973)
Minotaure (no. 1), June 1933 (cover designed by Picasso)
Bound volume
12 1/4 x 9 3/8 x 1/4 in. (31.1 x 23.8 x 0.6 cm)
The Baltimore Museum of Art, E. Kirkbride Miller Art Research Library



Max Ernst (French, born Germany, 1891–1976)
Minotaure (no. 11), 1938 (cover designed by Ernst)
Bound volume
12 1/4 x 9 3/8 x 1/4 in. (31.1 x 23.8 x 0.6 cm)
The Baltimore Museum of Art, E. Kirkbride Miller Art Research Library



André Masson (French, 1896–1987)
Minotaure (no. 12–13), May 1939 (cover designed by Masson)
Bound volume
12 1/4 x 9 3/8 x 1/4 in. (31.1 x 23.8 x 0.6 cm)
The Baltimore Museum of Art, E. Kirkbride Miller Art Research Library



René Magritte (Belgian, 1898–1967)
Minotaure (no. 10), Winter 1937 (cover designed by Magritte)
Bound volume
12 1/4 x 9 3/8 x 1/4 in. (31.1 x 23.8 x 0.6 cm)
The Baltimore Museum of Art, E. Kirkbride Miller Art Research Library



MONSTERS OF THE FLESH

Erwin Blumenfeld (American, 1897–1969)
The Dictator, ca. 1937
Gelatin silver print
11 3/4 x 9 1/2 in. (29.8 x 24.1 cm)
The Jewish Museum, New York, Purchase, Gift of John and Helga Klein (2005-29V)



André Masson (French, 1896–1987)
The Neckless Ones (Les Sans cou), 1934
Etching on wove paper
9 5/8 x 7 7/16 in. (24.5 x 18.9 cm)
The Baltimore Museum of Art: Gift of the Artist (BMA 1941.395)



Hans Bellmer (German, 1902–1975)
The Doll (La poupée), 1935
Hand-colored gelatin silver print affixed to original mount and stretcher
26 x 26 in. (66 x 66 cm)
Ubu Gallery, New York, and Galerie Berinson, Berlin



Hans Bellmer (German, 1902–1975)
The Doll (La poupée), 1934, published in *Minotaure*, no. 6 (Winter 1934)
Gelatin silver print
3 1/2 x 2 3/8 in. (8.9 x 6 cm)
Ubu Gallery, New York, and Galerie Berinson, Berlin



René Magritte (Belgian, 1898–1967)
Delusions of Grandeur, 1967
Bronze
60 x 48 x 32 in. (152.4 x 121.9 x 81.3 cm)
The Baltimore Museum of Art: Gift of Sylvia de Cuevas, New York
(BMA 2014.139)



Alberto Giacometti (Swiss, 1901–1966)
Headless Woman, original model 1932–36, this cast 1960
Bronze
57 1/2 x 11 x 14 1/4 in. (146.1 x 27.9 x 36.2 cm)
The Baltimore Museum of Art: Alan and Janet Wurtzburger Collection
(BMA 1966.55.9)



Dora Maar (French, 1907–1997)
Three Statues Clothed with Covers, ca. 1930s
Gelatin silver print
15 11/16 x 11 5/8 in. (39.8 x 29.6 cm)
The Baltimore Museum of Art: Purchase with exchange funds
from the Edward Joseph Gallagher III Memorial Collection; and
partial gift of George H. Dalsheimer, Baltimore
(BMA 1999.111)



André Masson (French, 1896–1987)
Brook in the Forest, 1937
Oil on canvas
21 5/8 x 13 in. (54.9 x 33 cm)
The Baltimore Museum of Art: Bequest of Blanche Adler
(BMA 1941.100)



André Masson (French, 1896–1987)
Ophelia, 1937
Oil on canvas
44 3/4 x 57 3/4 in. (113.7 x 146.7 cm)
The Baltimore Museum of Art: Bequest of Saidie A. May
(BMA 1951.328)



THE SPANISH CIVIL WAR: POLITICAL ENGAGEMENT AND THE BODY

André Masson (French, 1896–1987)
Tauromachy, 1937
Oil on canvas
32 x 39 1/2 in. (81.2 x 100.3 cm)
The Baltimore Museum of Art: The Cone Collection,
formed by Dr. Claribel Cone and Miss Etta Cone of Baltimore,
Maryland (BMA 1950.349)



Roberto Matta (Chilean, 1911–2002)
Forms in a Landscape, 1937
Crayon and graphite on wove paper
19 11/16 x 25 5/8 in. (50 x 65.1 cm)
The Baltimore Museum of Art: Gift of Saidie A. May
(BMA 1938.819)



Joan Miró (Spanish, 1893–1983)
Figures and Birds in a Landscape, 1935
Tempera on Masonite
10 7/8 x 19 1/2 in. (27.6 x 49.5 cm)
The Baltimore Museum of Art: Bequest of Saidie A. May
(BMA 1951.340)



Joan Miró (Spanish, 1893–1983)
Personages Attracted by the Forms of a Mountain, 1936
Tempera on Masonite
13 x 19 3/4 in. (33 x 50.2 cm)
The Baltimore Museum of Art: Bequest of Saidie A. May
(BMA 1951.338)



Joan Miró (Spanish, 1893–1983)
A Night Scene, 1937
Tempera with collage of printed papers and thin wood veneer
over graphite on wove paper,
25 3/16 x 20 in. (64 x 50.8 cm)
The Baltimore Museum of Art: Bequest of Saidie A. May
(BMA 1951.337)



André Masson (French, 1896–1987)
Jesus Is in the Field, 1936
Pen and black ink on blue wove paper
18 5/8 x 25 1/2 in. (47.3 x 64.8 cm)
The Baltimore Museum of Art: Gift of Blanche Adler
(BMA 1937.33)



Joan Miró (Spanish, 1893–1983)
Portrait No. 1, 1938
Oil on canvas
64 1/4 x 51 1/4 in. (163.2 x 130.2 cm)
The Baltimore Museum of Art: Bequest of Saidie A. May
(BMA 1951.339)



Joan Miró (Spanish, 1893–1983)
Black and Red Series (Plate 3), 1938
Etching printed in black and red on wove paper (artist's proof)
17 3/8 x 12 15/16 in. (44.2 x 32.8 cm)
The Baltimore Museum of Art: Nelson and Juanita
Greif Gutman Collection (BMA 1963.180)



Joan Miró (Spanish, 1893–1983)
Black and Red Series (Plate 7), 1938
Etching printed in red and black on wove paper (artist's proof)
12 15/16 x 17 11/16 in. (32.8 x 45 cm)
The Baltimore Museum of Art: Purchase Fund (BMA 1950.18)



Joan Miró (Spanish, 1893–1983)
The Giantess, 1938
Etching and drypoint on wove paper
17 3/8 x 12 3/4 in. (44.2 x 32.4 cm)
The Baltimore Museum of Art: Bequest of Saidie A. May, 1951
(BMA 1995.64)



Joan Miró (Spanish, 1893–1983)
Summer, 1938
Opaque watercolor on paperboard
14 1/4 x 10 3/4 in. (36.2 x 27.3 cm)
The Baltimore Museum of Art: Bequest of Saidie A. May
(BMA 1951.341)



Joan Miró (Spanish, 1893–1983)
Help Spain (Aidez l'Espagne), 1937
Color stencil (pochoir) on wove paper
12 7/8 x 91 5/16 in. (32.7 x 25.2 cm)
The Baltimore Museum of Art (BMA 1956.44)



Pablo Picasso (Spanish, 1881–1973)
The Dream and Lie of Franco (Plate 1), 1937
Etching, liftground etching, and aquatint with scraping on chine collé
on heavyweight wove paper
141 5/16 x 22 7/16 in. (38 x 57 cm)
The Baltimore Museum of Art: The Cone Collection, formed by
Dr. Claribel Cone and Miss Etta Cone of Baltimore, Maryland
(BMA 1950.12.298)

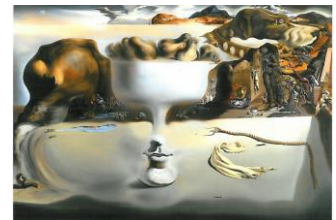


Pablo Picasso (Spanish, 1881–1973)
The Dream and Lie of Franco (Plate 2), 1937
Etching, liftground etching, and aquatint on chine collé
on heavyweight wove paper
14 13/16 x 22 7/16 in. (37.6 x 57 cm)
The Baltimore Museum of Art: The Cone Collection,
formed by Dr. Claribel Cone and Miss Etta Cone of Baltimore, Maryland
(BMA 1950.12.299)

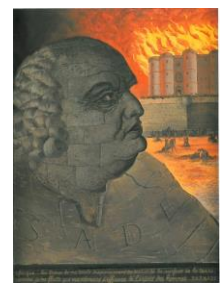


DÉJÀ VU: PREMONITIONS OF A GLOBAL WAR

Salvador Dalí (Spanish, 1904-1989)
Apparition of Face and Fruit Dish on a Beach, 1938-1939
Oil on canvas
45 x 56 5/8 in. (114.3 x 143.8 cm)
The Wadsworth Atheneum Museum of Art: The Ella Gallup Sumner
and Mary Catlin Sumner Collection Fund, 1939.269



Man Ray (American, 1890–1976)
Imaginary Portrait of the Marquis de Sade, 1938
Oil on canvas with attached painted wood panel,
24 1/4 x 18 3/8 in. (61.6 x 46.7 cm)
The Menil Collection, Houston (1985-021 DJ)



Kurt Seligmann (American, born Switzerland, 1900-1962)
Automne trompette (La Carillon muet)
1938
Oil on glass
20 1/4 x 16 1/8 in. (51.4 x 41 cm.)
Weinstein Gallery, San Francisco



Max Ernst (French, born Germany, 1891–1976)
The Barbarians, 1937
Oil on cardboard, 9 1/2 x 13 in. (24.1 x 33 cm)
The Metropolitan Museum of Art, New York,
Jacques and Natasha Gelman Collection, 1998 (1999.363.21)



Wolfgang Paalen (Mexican, born Austria, 1905–1959)
Battle of Saturnian Princes III, 1939
Oil and fumage on canvas
39 1/4 x 28 3/4 in. (99.7 x 73 cm)
Collection of Andrew S. Teufel



Joan Miró (Spanish, 1893–1983)
*A Drop of Dew Falling from the Wing of a Bird
Awakens Rosalie Asleep in the Shade of a Cobweb*, 1939
Oil on basketweave fabric
Image: 25 3/4 x 36 1/8 in.; Frame: 39 1/2 x 29 in.
University of Iowa Museum of Art, Mark Ranney Memorial Fund, 1948.3



André Masson (French, 1896–1987)
In the Tower of Sleep, 1938
Oil on canvas
32 x 39 1/2 in. (81.3 x 100.3 cm)
The Baltimore Museum of Art: Bequest of Saidie A. May
(BMA 1951.329)



Wolfgang Paalen (Mexican, born Austria, 1905–1959)
Totemic Landscape, 1937
Oil and fumage on canvas
28 1/4 x 38 1/4 in. (71.8 x 97.2 cm)
Collection of Harold and Gertrud V. Parker



DISLOCATION AND SURVIVAL: WORLD WAR II

Max Ernst (French, born Germany, 1891–1976)
Europe after the Rain II, 1940–42
Oil on canvas
2 19/16 x 58 3/16 in. (54.8 x 147.8 cm)
Wadsworth Atheneum Museum of Art, Hartford, CT,
The Ella Gallup Sumner and Mary Catlin Sumner Collection Fund
(1942.281)



Roberto Matta (Chilean, 1911–2002)

Prescience, 1939

Oil on canvas

36 x 52 1/2 in. (91.4 x 133.4 cm)

Wadsworth Atheneum Museum of Art, Hartford, CT,
The Ella Gallup Sumner and Mary Catlin Sumner
Collection Fund (1941.389)



André Masson (French, 1896–1987)

The Metaphysical Wall, 1940

Watercolor with pen and black ink over traces of graphite on wove paper

181 1/16 x 24 3/16 in. (47.4 x 61.4 cm)

The Baltimore Museum of Art: Bequest of Saidie A. May (BMA 1951.331)



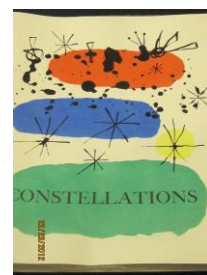
Joan Miró (Spanish, 1893–1983)

Constellations, published 1959

Unbound volume of color lithographs

17 5/8 x 14 5/16 x 11 1/16 in. (44.8 x 36.3 x 4.3 cm)

The Baltimore Museum of Art: Library Fund
(BMA 1960.182)



Joan Miró (Spanish, 1893–1983)

Acrobatic Dancers, 1940

Watercolor on wove paper

18 1/8 x 15 in. (46 x 38.1 cm)

Wadsworth Atheneum Museum of Art, Hartford, CT,
The Philip L. Goodwin Collection, Gift of James L. Goodwin,
Henry Sage Goodwin, and Richmond L. Brown (1958.263)



Joan Miró (Spanish, 1893–1983)

Women and Bird in Front of the Moon, 1944

Oil on burlap

8 5/8 x 6 1/2 in. (21.9 x 16.5 cm)

The Baltimore Museum of Art: Bequest of Saidie A. May
(BMA 1951.342)



SURREALISTS IN AMERICA

Max Ernst (French, born Germany, 1891–1976)

Chimeras in the Mountains, 1940

Oil on canvas

9 1/2 x 7 1/2 in. (24.1 x 19.1 cm)

The Baltimore Museum of Art: Bequest of Saidie A. May
(BMA 1951.296)



Max Ernst (French, born Germany, 1891–1976)
Three Well-Tempered Cypresses, 1949
Oil on canvas
25 3/16 x 211 1/16 in. (64 x 55.1 cm)
Private collection, New York



Max Ernst (French, born Germany, 1891–1976)
Day and Night, 1941–42
Oil on canvas
44 1/4 x 57 1/2 in. (112.4 x 146.1 cm)
The Menil Collection, Houston, Purchase, with funds provided by Adelaide de Menil Carpenter (1977-01 DJ)



André Masson (French, 1896–1987)
Mythology of Being, 1942
Unbound volume with printed text, offset lithographs, and one color etching and aquatint,
18 9/16 x 14 11/16 x 3/16 in. (47.1 x 37.3 x 4 cm)
The Baltimore Museum of Art: Bequest of Saidie A. May (BMA 2012.641)



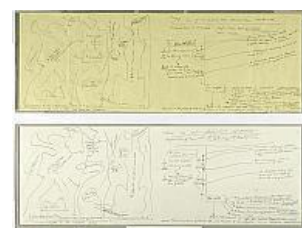
André Masson (French, 1896–1987)
Anatomy of My Universe, published 1943
Bound volume
10 5/8 x 8 5/8 x 3/8 in. (27 x 21.9 x 1 cm)
The Baltimore Museum of Art, E. Kirkbride Miller Art Research Library



André Masson (French, 1896–1987)
There Is No Finished World, 1942
Oil on canvas, 53 x 68 in. (134.6 x 172.7 cm)
The Baltimore Museum of Art: Bequest of Saidie A. May (BMA 1951.333)



André Masson (French, 1896–1987)
Diagrams for *There Is No Finished World*, 1942
Pen and black ink over graphite on yellow wove paper (French version)
Pen and black ink over graphite on paperboard (English version, translated by Rose Masson)
Each: 11 x 29 15/16 in. (27.9 x 76 cm)
The Baltimore Museum of Art: Gift of Saidie A. May (BMA 1947.138a-b)



André Masson (French, 1896–1987)
Germination, 1942
Oil, wax, and sand on canvas
17 3/8 x 18 7/8 in. (44.1 x 47.9 cm)
Wadsworth Atheneum Museum of Art, Hartford, CT,
The Ella Gallup Sumner and Mary Catlin Sumner Collection Fund
(2011.15.1)



Max Ernst (French, born Germany, 1891–1976)
The Witch, 1941
Oil on canvas
9 5/8 x 7 1/2 in. (24.4 x 19.1 cm)
Princeton University Art Museum, Princeton, NJ,
Gift of Alfred H. Barr Jr., Class of 1922, and Mrs. Barr (y1979-5)



Frederick Sommer (American, born Italy, 1905–1999)
Max Ernst, 1946
Gelatin silver print
7 5/8 x 9 1/2 in. (19.3 x 24.1 cm)
The Baltimore Museum of Art: Purchase with exchange funds
from the Edward Joseph Gallagher III Memorial Collection; and
partial gift of George H. Dalsheimer, Baltimore (BMA 1988.552)



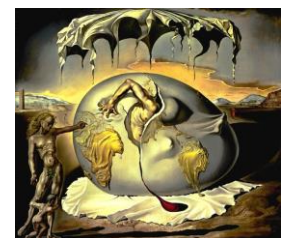
Horst P. Horst (American, born Germany, 1906–1999) and Salvador Dalí (Spanish, 1904–1989)
Study for Dream of Venus, 1939
Gelatin silver print with black opaque watercolor on photographic paper mounted on paperboard
91 5/16 x 71 5/16 in. (25.3 x 20.2 cm)
The Baltimore Museum of Art: Purchase with exchange funds
from the Edward Joseph Gallagher III Memorial Collection; and
partial gift of George H. Dalsheimer, Baltimore (BMA 1988.286)



Roberto Matta (Chilean, 1911–2002)
Rocks, 1940
Oil on canvas
38 1/8 x 60 1/8 in. (96.8 x 152.7 cm)
The Baltimore Museum of Art: Bequest of Saidie A. May
(BMA 1951.335)



Salvador Dalí (Spanish, 1904–1989)
Geopoliticus Child Watching the Birth of the New Man, 1943
Oil on canvas
18 x 20 1/2 in. (45.7 x 52.1 cm)
The Dalí Museum, Saint Petersburg, FL,
Gift of A. Reynolds and Eleanor Morse (2000.9)



Yves Tanguy (American, born France, 1900–1955)
The Earth and the Air, 1941
Oil on canvas
45 x 36 in. (114.3 x 91.4 cm)
The Baltimore Museum of Art: Bequest of Saidie A. May
(BMA 1951.363)



VVV PORTFOLIO, A EURO-AMERICAN COLLABORATION

André Breton (French, 1896–1966)
I Saluted at Six Paces Commander Lefebvre des Noettes, 1942,
published in *VVV*, no. 2–3 (March 1943)
Collage of color-lithograph postcard, colored thread, sequins,
brush and silver ink, and pen and black ink on wove paper
18 1/16 x 14 in. (45.8 x 35.6 cm)
The Baltimore Museum of Art: Gift of Saidie A. May (BMA 1948.54.1)



Max Ernst (French, born Germany, 1891–1976)
The Bird People, 1942, published in *VVV*, no. 2–3 (March 1943)
Black crayon frottage reworked with colored crayon on orange wove paper
18 x 14 in. (45.7 x 35.6 cm)
The Baltimore Museum of Art: Gift of Saidie A. May
(BMA 1948.54.5)



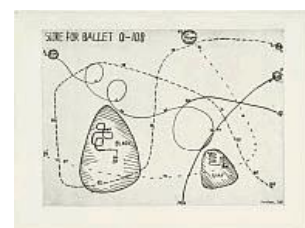
Roberto Matta (Chilean, 1911–2002)
Untitled, 1942, published in *VVV*, no. 2–3 (March 1943)
Colored inks and graphite on wove paper,
16 3/4 x 13 11/16 in. (42.6 x 34.8 cm)
The Baltimore Museum of Art: Gift of Saidie A. May
(BMA 1948.54.8)



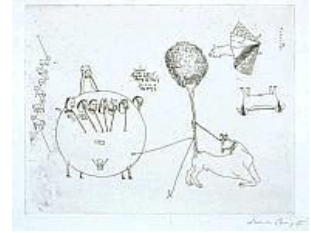
David Hare (American, 1917–1992)
Seated Nude, 1938, published in *VVV*, no. 2–3 (March 1943)
Toned gelatin silver print from altered negative mounted on blue wove paper,
17 15/16 x 14 in. (45.5 x 35.6 cm)
The Baltimore Museum of Art: Gift of Saidie A. May
(BMA 1948.54.6)



Alexander Calder (American, 1898–1976)
Score for Ballet 0-100, 1942, published in *VVV*, no. 2–3 (March 1943)
Engraving and drypoint on wove paper,
13 15/16 x 17 15/16 in. (35.4 x 45.6 cm)
The Baltimore Museum of Art: Gift of Saidie A. May (BMA 1948.54.2)



Leonora Carrington (British, 1917–2011)
Untitled, 1942, published in *VVV*, no. 2–3 (March 1943)
Etching on wove paper
11 7/8 × 13 7/8 in. (30.2 × 35.2 cm)
The Baltimore Museum of Art: Gift of Saidie A. May (BMA 1948.54.3)



Marc Chagall (French, born Russia, 1887–1985)
Eiffel Tower, 1942, published in *VVV*, no. 2–3 (March 1943)
Etching with open bite on wove paper
18 x 13 13/16 in. (45.7 x 35.1 cm)
The Baltimore Museum of Art: Gift of Saidie A. May
(BMA 1948.54.4)



Kurt Seligmann (American, born Switzerland, 1900–1962)
Phantom of the Past, 1942, published in *VVV*, no. 2–3 (March 1943)
Etching and aquatint on wove paper
17 9/16 x 13 7/16 in. (44.6 x 34.1 cm)
The Baltimore Museum of Art: Gift of Saidie A. May
(BMA 1948.54.10)



Yves Tanguy (American, born France, 1900–1955)
Composition, 1942, published in *VVV*, no. 2–3 (March 1943)
Etching on wove paper
16 1/16 x 12 1/4 in. (40.8 x 31.1 cm)
The Baltimore Museum of Art: Gift of Saidie A. May
(BMA 1948.54.11)



Robert Motherwell (American, 1915–1991)
Yellow Abstract Composition, 1942, published in *VVV*, no. 2–3 (March 1943)
Pen and black ink and watercolor on wove paper
81 3/16 x 51 5/16 in. (22.4 x 15.1 cm)
The Baltimore Museum of Art: Gift of Saidie A. May
(BMA 1948.54.9)



André Masson (French, 1896–1987)
Fruits of the Abyss, 1942, published in *VVV*, no. 2–3 (March 1943)
Etching and softground etching on wove paper
16 7/8 x 12 3/16 in. (42.9 x 30.9 cm)
The Baltimore Museum of Art: Gift of Saidie A. May
(BMA 1948.54.7)



AMERICAN RESPONSES

David Smith (American, 1906–1965)
Women in War, 1941
Etching and engraving on wove paper
10 1/16 x 13 in. (25.5 x 33 cm)
The Baltimore Museum of Art: Edward Joseph
Gallagher III Memorial Fund (BMA 2016.68)



David Smith (American, 1906–1965)
Medal for Dishonor: Death by Bacteria, 1939
Bronze on wood mount
10 x 10 x 7/8 in. (25.4 x 25.4 x 2.2 cm)
The Estate of David Smith, courtesy of Hauser & Wirth, New York



David Smith (American, 1906–1965)
Medal for Dishonor: Cooperation of the Clergy, 1939
Bronze, 11 3/16 x 10 7/16 x 13/16 in. (28.4 x 26.5 x 3 cm)
The Estate of David Smith, courtesy of Hauser &
Wirth, New York



David Smith (American, 1906–1965)
Medal for Dishonor: Study for Propaganda for War, 1939
Bronze
9 13/16 x 10 x 3/4 in. (24.9 x 25.4 x 1.9 cm)
The Estate of David Smith, courtesy of Hauser & Wirth, New York



Isamu Noguchi (American, 1904–1988)
Monument to Heroes, 1943, refabricated 1978
Plastic, wood, bovine bones, and string
37 1/2 x 20 3/4 x 19 in. (95.3 x 52.7 x 48.3 cm)
The Isamu Noguchi Foundation and Garden Museum, New York



Mark Rothko (American, born Russia, 1903–1970)
The Syrian Bull, 1943
Oil and graphite on canvas,
39 3/8 x 27 13/16 in. (100 x 70.6 cm)
Allen Memorial Art Museum, Oberlin College, Oberlin, OH,
Gift of Annalee Newman in honor of Ellen H. Johnson (1991.41.1)



Arshile Gorky (American, born Armenia, 1904–1948)

The Unattainable, 1945

Oil on canvas

41 1/4 x 29 1/4 in. (104.8 x 74.3 cm)

The Baltimore Museum of Art: Purchase with exchange funds from Blanche Adler Bequest, Frederic W. Cone, William A. Dickey, Jr., Nelson and Juanita Greif Gutman Collection, Wilmer Hoffman, Mr. and Mrs. Albert Lion, Saidie A. May Bequest, Philip B. Perlman Bequest, Leo M. Rogers, Mrs. James N. Rosenberg, and Paul Vallotton (BMA 1964.15)



Jackson Pollock (American, 1912–1956)

Water Birds, 1943

Oil on canvas

26 1/8 x 21 3/16 in. (66.3 x 53.8 cm)

The Baltimore Museum of Art: Bequest of Saidie A. May (BMA 1951.349)



Jackson Pollock (American, 1912–1956)

Untitled, ca. 1944

Brush and black ink, pen and black ink, opaque watercolor, and colored pencils with scraping on off-white wove paper
10 7/16 x 11 in. (26.5 x 28 cm)

The Baltimore Museum of Art: Gift of Mr. and Mrs. Morton E. Rome (BMA 1978.135)



Jackson Pollock (American, 1912–1956)

Untitled, 1944–45, printed 1967

Engraving and drypoint on wove paper

19 7/8 x 27 1/2 in. (50.5 x 69.8 cm)

The Baltimore Museum of Art: Blanche Adler Memorial Fund, and purchase with exchange funds from Bequest of Saidie A. May (BMA 1972.57.1)



DESIRE AND SACRIFICE: A RETURN OF RITUALS AND MYTHS

Wifredo Lam (Cuban, 1902–1982)

Exodus, 1948

Oil on burlap, 50 1/2 x 60 in. (128.2 x 152.4 cm)

Howard University Gallery of Art, Washington, DC, Permanent Collection, Gift of Arthur B. Spingarn



Kay Sage (American, 1898–1963)

I Saw Three Cities, 1944

Oil on canvas

36 1/4 x 27 15/16 in. (92.1 x 71 cm)

Princeton University Art Museum, Princeton, NJ, Gift of the Estate of Kay Sage Tanguy (y1964-162)



Dorothea Tanning (American, 1910–2012)
The Temptation of Saint Anthony, 1945–46
Oil on canvas
48 x 36 7/8 in. (121.9 x 93.7 cm)
Private collection



Yves Tanguy (American, born France, 1900–1955)
The Five Strangers, 1941
Oil on canvas, 385/8 x 32 in. (98.1 x 81.3 cm)
Wadsworth Atheneum Museum of Art,
Hartford, CT, The Ella Gallup Sumner and Mary
Catlin Sumner Collection Fund (1943.220)



Wifredo Lam (Cuban, 1902–1982)
Deity, 1942
Opaque watercolor and charcoal on wove paper,
41 1/4 x 33 1/4 in. (104.8 x 84.5 cm)
The Baltimore Museum of Art: Bequest of Saidie A. May
(BMA 1951.318)



Maria Martins (Brazilian, 1894–1973)
The Two Sacred Ones, 1942
Bronze
46 x 36 x 32 in. (116.8 x 91.4 x 81.3 cm)
The Baltimore Museum of Art: Anonymous Gift (BMA 1945.34)



William Baziotes (American, 1912–1963)
The Drugged Balloonist, 1943
Collage of printed paper, pen and black ink, and graphite on wove paper,
18 1/4 x 24 in. (46.4 x 60.9 cm)
The Baltimore Museum of Art: Bequest of Saidie A. May
(BMA 1951.266)



MONSTERS AND MEMORY

René Magritte (Belgian, 1898–1967)

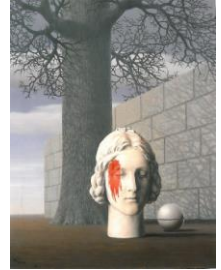
The Fickleness of the Heart, 1950

Oil on canvas

32 x 25 in. (81.3 x 63.5 cm)

Wadsworth Atheneum Museum of Art, Hartford, CT,

Gift of Tanaquil Le Clercq and George Balanchine (1998.48.1)



Robert Motherwell (American, 1915–1991)

Monster, 1975

Brush and tusche lithograph on handmade wove paper

41 5/16 x 31 1/4 in. (105 x 79.4 cm)

The Baltimore Museum of Art: Partial gift of the Dedalus Foundation,

New York; and Women's Committee Acquisitions Endowment for

Contemporary Prints and Photographs

(BMA 2009.130)



SURREALIST FILMS (ALTERNATING IN GALLERY)

Luis Buñuel

Un Chien Andalou, 1929



Maya Deren

Meshes of the Afternoon, 1943

