



# **THE BALTIMORE MUSEUM OF ART**

---

2018 ANNUAL REPORT

BALTIMORE  
MUSEUM OF  
ART **BMA**

# CONTENTS

---

<b>Introduction</b> .....	<b>3</b>
<b>Mission &amp; Vision</b> .....	<b>4</b>
<b>Trustees</b> .....	<b>5</b>
<b>Exhibitions</b> .....	<b>6</b>
<b>Education</b> .....	<b>8</b>
<b>Our Donors</b> .....	<b>12</b>

## **ANNUAL PROGRAM SUPPORT**

Government Support .....	13
Council Program .....	13
Contributor Program .....	15
Corporate Council .....	19
Foundation Support .....	20
Gifts In-Kind .....	20
Bequests .....	20
Matching Gifts .....	20
Year-End Appeal .....	20

## **SPECIAL PROGRAM SUPPORT**

Project Support .....	21
Support for Free Admission .....	21
Support for Educational Programs .....	21

## **ART ACQUISITION FUNDS**

Gifts of Funds for Art Purchases .....	22
Endowed and Expendable Purchase Funds ...	22

## **TRIBUTE GIFTS..... 23**

## **ART ACCESSIONS**

African .....	26
Asian .....	26
Contemporary Painting & Sculpture .....	28
Contemporary Time-Based Media .....	28
Contemporary Prints, Drawings, Photographs .....	29
Decorative Arts .....	35
Pre-1960 American Painting & Sculpture .....	37
Pre-1960 European Painting & Sculpture .....	37
Pre-1960 Graphic Arts .....	37
Textiles .....	42

## **Financials..... 44**

# FORWARD IN 2018

---



PHOTO BY CHRISTOPHER MYERS

## A BOLD NEW VISION

During the past year, The Baltimore Museum of Art (BMA) developed a new strategic plan with a bold new mission and vision that will have both regional and national impact. This includes increasing and diversifying audiences, acquiring and presenting a nationally significant post-WWII African American art collection, diversifying exhibitions and public programs, and diversifying the Board and staff to effect systemic change across the institution. The BMA intends to become a leading, replicable model for community engagement through collecting and interpreting underrepresented art and artists. This new vision, mission, and strategic plan represent an extension of the historical character of the BMA as a risk-taking, forward-thinking, and bold arts institution with a deep commitment to serving its constituents.

The BMA's intention to change the art historical canon was made most visible by executing an aggressive but responsible deaccessioning process that met the standards advanced by the Association of Art Museum Directors and the American Alliance of Museums. After an extremely careful review, a group of seven works were selected to auction that would together provide the war chest necessary to allow the Museum to buy the most important work being made today by women and artists of color. The proceeds from the successful outcome of the public and private sales have already allowed us to acquire extraordinary works by Isaac Julien, Wangechi Mutu, John T. Scott, Amy Sherald, Carrie Mae Weems, and Jack Whitten, to name a few, and with many more to come.

A robust schedule of exhibitions featured the best contemporary artists from Baltimore and beyond and showcased strengths of the collection in African art and in prints, drawings, and photographs. Educational and public programs served tens of thousands of people with events and activities that occurred at the Museum, in Baltimore communities, and in the digital realm. Notable programs included conversations with acclaimed Baltimore-born author Ta-Nehisi Coates, as well as renowned artists Njideka Akunyili Crosby, Meleko Mokgosi, and Stephen Towns. Other visible changes to the Museum came as the result of renovations and art installations that provided a more dynamic visitor experience. Major improvements to the Alvin and Fanny B. Thalheimer and Saidie A. May galleries upgraded lighting and created more elegant and flexible spaces for exhibitions. The East Lobby was transformed with Tomás Saraceno's breathtaking *Entangled Orbits* suspended above the stairs. Ann Veronica Janssens' ethereal *Fog Star* installation animated the Latrobe Spring House with light, color, and fog, and Spencer Finch's starry *Moon Dust (Apollo 17)* sculpture in Fox Court is illuminating the Neoclassical hall through 2024.

A handwritten signature in black ink, appearing to read 'C. Bedford'.

CHRISTOPHER BEDFORD, DOROTHY WAGNER WALLIS DIRECTOR

# MISSION & VISION

---

## BMA MISSION

The Baltimore Museum of Art connects art to Baltimore and Baltimore to the world, embodying a commitment to artistic excellence and social equity in every decision from art presentation, interpretation, and collecting, to the composition of our Board of Trustees, staff, and volunteers—creating a Museum welcoming to all.

## BMA VISION

Over 100 years ago, The Baltimore Museum of Art was founded on the belief that access to art and ideas is integral to a vibrant and healthy civic life. This belief is at the heart of the BMA and remains our core value.

The BMA has long focused on acquiring the art of the present moment, while maintaining and deepening a historic collection made relevant through vigorous development and reinterpretation in all collecting areas. Through the courageous and risk-taking vision of previous Museum leaders, the BMA assembled and presented one of the most important collections of 18th-, 19th-, and 20th-century art in the United States. These visionary actions established the fundamental character of this Museum.

Building on this legacy of excellence, the BMA will form an equally compelling collection for the 21st century. Socially relevant, cutting-edge acquisitions, exhibitions, and programs will lead the way both locally and globally—and historical accuracy, merit, and equity will become the basis for a new canon across our Museum. Through collecting, researching, presenting, and interpreting the Museum's rich and varied collection, and by listening to the needs of our audience, the BMA will embody its commitment to excellence, fairness, relevance, and social justice. Every Museum policy and practice, strategic decision, as well as the composition of the Board of Trustees, staff, and volunteers will be driven by these responsibilities. Bold, brave, and essential, it is the unwavering vision of The Baltimore Museum of Art to be the most relevant publicly engaged museum in the United States and a dynamic model for all others.





# BOARD OF TRUSTEES

---

The Board of Trustees offers leadership that fosters ongoing support for the Museum's ambitious mission and vision. This diverse group comprises regional and national leaders in art, philanthropy, and business who are extraordinarily engaged and deeply committed to ensuring the long-term strength of the BMA.

BOARD OF TRUSTEES, JULY 1, 2017, THROUGH JUNE 30, 2018

## OFFICERS

Clair Zamoiski Segal, Chair  
James D. Thornton, Vice Chair  
Frederick Singley Koontz,  
Immediate Past Chair  
Nancy L. Dorman, Vice President  
Susan B. Katzenberg,  
Vice President & Treasurer  
Amy Meadows, Vice President  
Donald J. Peters, Vice President  
Ann Allston Boyce, Secretary

## EXECUTIVE COMMITTEE

Clair Zamoiski Segal, Chair  
James D. Thornton, Vice Chair  
Ann Allston Boyce  
Diane Cho  
Ellen Dame  
Nancy L. Dorman  
Nupur Parekh Flynn  
Patricia H. Joseph  
Susan B. Katzenberg  
Frederick Singley Koontz

Amy Meadows  
Donald J. Peters  
David Warnock

## TRUSTEES

Virginia K. Adams  
William Backstrom  
Heidi Berghuis  
Ann Allston Boyce  
Diane Cho  
Maya Rockeymoore Cummings  
Ellen R. Dame  
Nancy L. Dorman  
Amy Elias  
Nupur Parekh Flynn  
John A. Gilpin  
Martha Glenn  
Amy Gould  
F. Mackey Hughes  
Patricia H. Joseph  
Barbara Katz  
Susan B. Katzenberg

Frederick Singley Koontz  
Robyn Brenza Kress  
Daniel Leraris  
Brooke Lierman  
Amy Frenkil Meadows  
John Meyerhoff  
David H. Milton  
Fiona Ong  
Rhonda Overby  
Adam Pendleton  
Donald J. Peters  
Scott Schelle  
Alan Schwartz  
Clair Zamoiski Segal  
Amy Sherald  
Wilma Bulkin Siegel  
Jean Silber  
William Taylor IV  
James D. Thornton  
Mark Wagner  
David W. Wallace  
David Warnock  
Leana S. Wen

## HONORARY TRUSTEES

Alexander C. Baer  
Constance R. Caplan  
Suzanne F. Cohen  
Stiles Tuttle Colwill  
Janet E. Dunn  
Sandra Levi Gerstung  
Katherine M. Hardiman  
Margot W.M. Heller  
Louise P. Hoblitzell  
Freeman A. Hrabowski III  
Mary B. Hyman  
Jeanette Kimmel  
Jeffrey A. Legum  
Charles W. Newhall III  
James S. Riepe  
Frederica K. Saxon  
Louis B. Thalheimer  
Ellen W.P. Wasserman  
Calman J. Zamoiski, Jr.

## NATIONAL TRUSTEES

Bernice Barth  
Sylvia de Cuevas  
Monroe Denton  
Barbara Duthuit  
Brenda Edelson  
Phillips Hathaway  
Joseph Holtzman  
Stephen Mazoh  
Edward S. Pantzer

## EX-OFFICIO TRUSTEES

The Honorable Barry Glassman  
The Honorable Larry Hogan  
The Honorable Doug Howard  
The Honorable Kevin Kamenetz  
The Honorable Allan H. Kittleman  
The Honorable Joan M. Pratt  
The Honorable Catherine E. Pugh  
The Honorable Steven R. Schuh  
The Honorable Bernard C.  
"Jack" Young

# EXHIBITIONS

---

A broad range of contemporary exhibitions gave visitors numerous opportunities to discover the art of our time and explored the strengths of the BMA's collection. *Odyssey: Jack Whitten Sculpture, 1963–2017*, an ambitious exhibition co-organized with The Metropolitan Museum of Art, showcased the late artist's most personal work alongside a selection of abstract paintings for which he is best known. A partnership with the Tate galleries produced an exhibition of films and props by acclaimed artists Mary Reid Kelley and Patrick Kelley. The art of painting was celebrated with exhibitions by 2018 MacArthur Foundation Fellowship winner Njideka Akunyili Crosby, Meleko Mokgosi, and Al Loving. The Museum's exceptional and vast collection of works on paper provided the basis for exhibitions on Mexican Modernist prints, a revisit of the BMA's 1939 landmark exhibition of contemporary African American art, and Art Nouveau and Vienna Secession posters from a recent gift by LeRoy E. Hoffberger and Paula Gately Tillman Hoffberger. Wonderful representations of birds from sub-Saharan countries were drawn from the Museum's renowned African art collection. Baltimore-based artists Annet Couwenberg and Stephen Towns each had superb exhibitions in the Jean and Alan Berman Textile Gallery and Phaen Howng, in partnership with Blue Water Baltimore, transformed the Commons in the Patricia and Mark Joseph Education Center with a colorful multimedia installation. Lastly, the BMA co-organized *Head Back & High: Senga Nengudi, Performance Objects (1976–2015)* with the Los Angeles-based nonprofit Art + Practice and *Solidary & Solitary: The Joyner/Giuffrida Collection*, co-organized with the Ogden Museum of Southern Art, continues to travel to venues throughout the U.S.



SPENCER FINCH: MOON DUST



**FRONT ROOM:  
NJIDEKA AKUNYILI CROSBY | COUNTERPARTS**

PHOTO BY MITRO HOOD



**ODYSSEY: JACK WHITTEN  
SCULPTURE, 1963-2017**

PHOTO BY MITRO HOOD



**MELEKO MOKGOSI:  
ACTS OF RESISTANCE**

**Hank Willis Thomas & Kara Walker**  
June 28, 2017–August 18, 2018

**Annet Couwenberg: From Digital to Damask**  
August 16, 2017–February 18, 2018

**Tomás Saraceno: Entangled Orbits**  
October 1, 2017–February 24, 2019

**Spiral Play: Loving in the '80s**  
October 18, 2017–April 15, 2018

**Paul Chan: 1st Light**  
October 18, 2017–July 15, 2018

**Front Room: Njideka Akunyili Crosby | Counterparts**  
October 25, 2017–March 11, 2018

**Uncommon Language: Glenn Ligon**  
October 29, 2017–August 19, 2018

**Phaan Howng: The Succession of Nature**  
November 3, 2017–October 7, 2018

**Crossing Borders: Mexican Modernist Prints**  
November 19, 2017–March 11, 2018

**Intersections: Tables & Chairs**  
November 22, 2017–December 2, 2018

**Head Back & High: Senga Nengudi,  
Performance Objects (1976 – 2015)**  
December 6, 2017–May 27, 2018

**Beyond Flight: Birds in African Art**  
December 20, 2017–June 17, 2018

**Spencer Finch: Moon Dust**  
February 21, 2018–October 14, 2024

**Stephen Towns: Ruminations and a Reckoning**  
March 7, 2018–September 2, 2018

**Sacred Spring: Vienna Secession Posters  
from the Collection of Le Roy E. Hoffberger  
and Paula Gately Tilman Hoffberger**  
March 25, 2018–July 29, 2018

**Mary Reid Kelley & Patrick Kelley: We Are Ghosts**  
April 4, 2018–August 19, 2018

**Odyssey: Jack Whitten Sculpture, 1963 – 2017**  
April 22, 2018–July 29, 2018

**Meleko Mokgosi: Acts of Resistance**  
May 2, 2018–November 11, 2018

**Baltimore City and Baltimore County Public Schools  
Student Art Exhibitions**  
May 9, 2018–May 21, 2018

**Ann Veronica Janssens: Fog Star**  
May 30, 2018–October 31, 2018

**1939: Exhibiting Black Art at the BMA**  
June 13, 2018–October 28, 2018

**Sondheim Artscape Awards**  
June 20, 2018–August 5, 2018



# EDUCATION

---

The BMA's education department served more than 47,000 Members, visitors, students, and teachers in the Museum, as well as teachers and community residents throughout the region through programs such as Free Family Sundays, Close Encounters student tours, Open Hours events, docent-led gallery talks, and audio and GoMobile tours. *The Necessity of Tomorrow(s)* event with acclaimed Baltimore-born author Ta-Nehisi Coates attracted a diverse audience for conversations about his work and Black futurism. Offsite, the BMA Outpost engaged more than 2,500 participants in Baltimore communities and Art-To-Go activities were distributed by email to 3,500 teachers around the world. Art After Hours remains a popular event with 1,830 visitors, most between the ages of 21 and 45, enjoying evening activities in the galleries. We are looking forward to building on these accomplishments, more deeply engaging our audiences, and serving as a creative catalyst for the region in the years ahead.





# FAMILY PROGRAMS

---

## FREE FAMILY SUNDAYS

This free drop-in program serves a highly diverse group of families each Sunday at the Museum. Participants come from across the city, county, and region, including Virginia and Pennsylvania, as well as other countries. The family program serves over 5,000 participants annually.

**4,769** VISITORS

**50** FREE FAMILY SUNDAYS

**95** AVERAGE VISITORS EACH FREE FAMILY SUNDAY

## CELEBRATIONS

The BMA's free community days in celebration of new exhibitions provide activities for all ages, from hands-on workshops to performances, demonstrations, artist talks, and more, including opportunities to register to vote.

**1,124** *TOMÁS SARACENO: ENTANGLED ORBITS*  
OPENING CELEBRATION VISITORS

**811** *ODYSSEY: JACK WHITTEN SCULPTURE,*  
1963–2017 OPENING CELEBRATION VISITORS

## FAMILY PACKS

The BMA's costume packs, family guides, and family audio tours inspire close looking, imaginative play, and deeper connections to the BMA's world-class art collection.

**32** FAMILY PACKS DISTRIBUTED

# COMMUNITY PROGRAMS

---

## COMMONS COLLABORATION

The Commons reflects the voices and creativity of Baltimore. A gallery adjacent to the Joseph Education Center, the Commons features a year-long Commons Collaboration inspired by the theme of home, featuring artwork by an artist/artist team working in conjunction with a non-profit organization.

**154** PARTICIPANTS

**4** PROGRAMS IN FISCAL YEAR 2018

## BMA OUTPOST

The BMA Outpost mobile museum furthers the Museum's goal of becoming an indispensable element of community life in the city of Baltimore. The Outpost encourages reflection on our histories, inspiration, joy, and connection to a place and to each other.

**2,504** VISITORS

## OPEN HOURS

BMA Open Hours is a place for audiences to become more deeply engaged with the Museum, by proposing and facilitating public programs in the Commons related to the theme of home.

**1,120** PARTICIPANTS

**12** PROGRAMS

## BIG TABLE

The Big Table gallery invited visitors to explore a single big idea in contemporary art through reflective questions, videos, discussions with artists and thinkers, and related reading and collaborative activities.

**44** PARTICIPANTS



# SCHOOL & TEACHER PROGRAMS

## CLOSE ENCOUNTERS

Close Encounters is a multiple-visit program for fourth-grade students in partnership with Baltimore City Public Schools. Launched in 1982 with four local schools, the program has since worked with students from 117 elementary schools from across Baltimore City.

- 4** VISITS TO THE BMA PER CLASS
- 756** STUDENTS WHO CREATED HANDS-ON PROJECTS
- 36** YEARS RUNNING THE PROGRAM
- 13** PARTICIPATING SCHOOLS IN FISCAL YEAR 2018

## SCHOOL TOURS

The BMA offers a range of tour experiences for Pre-K through university-level students, including guided and self-guided tours. Tour topics are tailored to the needs of each individual group and engage students with activities that inspire creativity, sharpen observation, foster critical thinking, and explore the human stories behind art.

- 12,959** STUDENTS ON TOUR IN FISCAL YEAR 2018
- 425** SCHEDULED STUDENT TOURS
- 173** DIFFERENT SCHOOLS ON TOUR

## TEACHER WORKSHOPS AND RESOURCES

Teacher workshops are designed to support teacher understanding of the BMA's collections and exhibitions, teaching with art, and how to use the BMA as a learning resource. Teachers receive extensive background information and participate in creative activities that spark new thinking about ways to integrate art into their classroom curriculum and develop the creative capacities of their students.

- 902** PARTICIPATING ARTISTS
- 4,659** PARTICIPATING TEACHERS

## DOCENT PROGRAM

Working from a strong knowledge of teaching and art history, the BMA's docents provide a range of interactive tours for students in grades Pre-K through 12 that inspire creativity, foster critical thinking, and explore the human stories of art. In 2017–2018, 55 docents received 48 hours of training on the BMA collection, exhibitions, teaching strategies, learning theory, and art history.

- 9,639** DOCENT SERVICE HOURS
- 917** DOCENT GROUPS

## STUDENT ART SHOW

For the past 30 years, the BMA has been honored to present an annual exhibition of artwork by Baltimore County Public School students, from preschoolers to high school seniors. In 2007, Baltimore City Public School students presented their first exhibition at the BMA and continue the yearly tradition. Visitors experience the creativity and imagination of Baltimore's youth, demonstrated in a range of traditional and surprising materials and techniques.

- 4,634** EXHIBITION ATTENDEES





# ADULT PROGRAMS & RESOURCES

---

## GO MOBILE

Video and audio interviews with artists, curators, and local figures in the arts community expand visitors' experiences of the American, Contemporary, African, and Asian art galleries.

**1,246** GO MOBILE USES

## AUDIO GUIDE

Available on complimentary BMA devices or visitors' smartphones, audio tours offer fresh perspectives on a variety of subjects.

**858** ADULT AUDIO GUIDE USES

## JAZZ

The BMA's popular outdoor concert series brings local and regional talent to the Museum's idyllic Wurtzburger Sculpture Garden where concertgoers enjoy masterworks of modern sculpture among lush greenery and relaxed seating.

**386** CONCERTGOERS

## ART AFTER HOURS

During these lively evening events, guests mingle throughout the Museum, enjoying the galleries, informal conversations with artists, collaborative art projects and workshops, music, food, and cocktails.

**1,830** ART AFTER HOURS ATTENDEES

## LECTURES & ADULT PROGRAMS

Baltimore's leading artists and makers guide adult learners through hands-on opportunities in the BMA's adult workshops.

**3,240** PARTICIPANTS





# OUR DONORS

---

"Thanks to the generosity of the following donors and members, the BMA ended fiscal year 2018 with extraordinary financial support and a balanced budget. We are very appreciative of everyone's continued generosity and unwavering commitment to the Museum. The contributions and gifts of those closest to us is an affirmation of our mission and vision."

CLAIR ZAMOISKI SEGAL, CHAIR, BOARD OF TRUSTEES



# ANNUAL PROGRAM SUPPORT

---

THE BALTIMORE MUSEUM OF ART ACKNOWLEDGES WITH GRATITUDE THOSE WHO MADE A CONTRIBUTION IN SUPPORT OF MUSEUM OPERATIONS BETWEEN JULY 1, 2017, AND JUNE 30, 2018.

## **GOVERNMENT SUPPORT**

---

### **\$1,000,000+**

City of Baltimore, with support from the Mayor and City Council  
Maryland State Arts Council, Part of Maryland Department of Commerce

### **\$100,000 – \$999,999**

Citizens of Baltimore County, with support from the County Council and Baltimore County Commission on Arts & Sciences

### **\$10,000 – \$99,999**

Howard County Arts Council, with support from the County Executive, County Council

## **COUNCIL PROGRAM**

---

### **Leadership Council**

#### **\$50,000+**

The Rothschild Charitable Foundation:  
Ellen and Linwood Dame, David and Hope Rothschild

### **Founder's Council**

#### **\$25,000 – \$49,999**

Suzanne F. Cohen  
Nancy L. Dorman and Stanley Mazaroff  
Sandra Levi Gerstung  
Amy L. Gould and Matthew S. Polk, Jr.  
Jeanette C. and Stanley H. Kimmel  
Robert E. Meyerhoff and Rheda Becker  
Lora J. and Donald J. Peters  
The Warnock Family Foundation

### **Benefactor's Council**

#### **\$15,000 – \$24,999**

Frona Brown, Ed.D. and Beryl J. Rosenstein, M.D.  
Mrs. J. Woodford Howard  
Ms. Susan B. Katzenberg  
Mr. and Mrs. Harvey M. Meyerhoff

### **Chairman's Council**

#### **\$10,000 – \$14,999**

Anonymous  
Virginia K. Adams, Ph.D. and Neal M. Friedlander, M.D.  
Alexander C. Baer  
Heidi and Brian Berghuis  
George L. Bunting, Jr. and Anne E. Bunting  
Constance R. Caplan  
Ms. Amy Elias and Mr. Richard Pearlstone  
Guy E. Flynn and Nupur Parekh Flynn  
Mr. and Mrs. Gordon H. Glenn  
Katherine and Joseph Hardiman  
Margot W. M. Heller  
Mary B. Hyman  
Patricia and Mark Joseph / The Shelter Foundation  
Marc and Riva Kahn  
Barbara P. Katz  
Frederick Singley Koontz  
Mr. Keith A. Lee  
Jeffrey A. and Harriet Legum  
Duke Lohr and Billie Grieb  
Jennifer and Jake Martin  
The Pierre and Tana Matisse Foundation  
John Meyerhoff and Lenel Srochi-Meyerhoff  
Mary and James Miller  
Jeannie Murphy

Dr. James D. Parker  
James S. Riepe Family Foundation  
Frederica Kolker Saxon  
Clair Zamoiski Segal  
Anne L. Stone  
Mr. and Mrs. Thomas H. Stoner  
The Louis B. Thalheimer and Juliet E. Eurich Philanthropic Fund, Inc.  
David and Chris Wallace  
Mr. Kwame Webb

### **Director's Council**

#### **\$5,000 – \$9,999**

Anonymous (3)  
Ellen and Ed Bernard  
Ethel W. Berney  
Ms. Ann A. Boyce and Mr. Robert Mansfield  
S. B. Cooper and R. L. Besson  
Cordish Family Foundation  
Maya Rockeymoore Cummings  
Mrs. Worth B. Daniels Jr.  
Gwen Davidson  
Mrs. Helen S. Davis  
Dr. Monroe Denton  
Mr. and Mrs. Edward K. Dunn, Jr.  
Alan and Carol Edelman  
Laura L. Freedlander  
Mr. Kenneth L. Greif  
Ms. Nancy Hackerman  
Mr. Stephen Joseph Immelt and Ms. Susan C. Immelt  
Ms. Joanna M. Kelly and Mr. John A. Gilpin  
Ms. Robyn Brenza Kress  
Francine and Allan Krumholz  
Madeline and Philip Lacovara  
Patricia Lasher and Richard Jacobs



Mr. Daniel Leraris and Ms. Sybil Mead  
 John Lessner and David Bergman  
 Dale and Beng Light  
 Frank E. and Miriam Loveman Foundation  
 Mr. and Mrs. Lawrence M. Macks  
 Ms. Martha Macks-Kahn and Dr. Peter Kahn  
 Mr. David H. Milton  
 Ms. Elizabeth K. Moser  
 Ms. Rhonda Overby and Mr. Joseph Haskins  
 Lawrence C. Pakula, M.D.  
 Mr. and Mrs. Edward S. Pantzer  
 Dr. Thomas H. Powell  
 Gretchen S. Redden  
 Brian and Mary Jo Rogers  
 The Ben and Esther Rosenbloom  
 Foundation, Inc.  
 Mr. and Mrs. Arthur J. Rothkopf  
 Mr. and Mrs. J. Mark Schapiro  
 Gerald Scheinker  
 Mr. Scott Schelle  
 Alison and Alan Schwartz  
 M. Sigmund & Barbara K. Shapiro  
 Philanthropic Fund  
 Dr. Wilma Bulkin Siegel  
 Jean F. Silber  
 Solomon H. Snyder, M.D.  
 Joanne M. Gold and Andrew A. Stern  
 Mr. and Mrs. James D. Thornton  
 Ellen W. P. Wasserman

**Curator's Council**  
**\$3,000 – \$4,999**

George and Frances Alderson  
 Mr. Robert Bair  
 Betty-Jean and David Bavar  
 Gill Wright Bentley  
 Ellen Baron Blaustein and  
 Mordecai P. Blaustein, M.D.  
 Eva and Warren Brill  
 Dr. Peter and Eileen Broido  
 Dr. Donald and Mrs. Linda Brown  
 Ms. Mary Catherine Bunting  
 Dr. Miriam L. Cohen

Betty Cooke  
 Penelope Cordish  
 Bobbi Cox  
 Richard and Rosalee Davison  
 Mr. Edward S. Delaplaine II and  
 Mr. Todd Wilson  
 Mr. and Ms. Samuel M. Dell III  
 The Arthur & Isadora Dellheim Foundation  
 Fred and Andrea Dunlap  
 Nelson and Sara Fishman Family Foundation  
 Mr. and Mrs. Charles Freeland  
 JoAnn and Jack Fruchtman  
 Ann and David Giroux  
 The Harry L. Gladding Foundation/Winnie  
 and Neal Borden  
 Ms. Louise K. Goodman  
 Wendy and Ben Griswold  
 Dr. Ruby P. Hearn and Dr. Robert W. Hearn  
 Mr. and Mrs. Donald B. Hebb, Jr.  
 Sandra and Thomas Hess  
 Barbara and Michael Hettleman  
 Penney and A. C. Hubbard  
 Jay Jenkins and T.J. Hindman  
 Mimi Kapiloff  
 Sandy Leichtman  
 Carol Macht  
 Mr. and Mrs. Frederick W. Meier, Jr.  
 Sayra and Neil Meyerhoff  
 Mr. Christian J. Mixter and  
 Mrs. Linna M. Barnes  
 Gail H. Ostergaard  
 Ms. Amy Reid and Dr. Alan Faden  
 Mr. and Mrs. Richard C. Riggs, Jr.  
 Mary and Paul Roberts  
 Norman and Lorraine Rocklin  
 Michael Rosenbaum and Amy Kiesel  
 Ilene and Michael Salcman  
 Stephen M. Salny  
 Mrs. Marvin S. Schapiro  
 Ms. Stacy Shamberger  
 The Sherman Family Foundation  
 Joan and Edward Sills



PHOTO BY CHRIS TOBERHAWES

Joan and Thomas Spence  
 Mrs. Janice Starr  
 Bill and Salli Ward  
 Anne and Chris West

**Patron's Council**  
**\$1,500 – \$2,999**

Anonymous (4)  
 Ms. Diane Abeloff and Dr. Emile Bendit  
 Mrs. June L. Adams  
 Mr. and Mrs. Robert Allen  
 Mr. and Mrs. Peter Bain  
 Louise Z. (Weezy) Barber  
 Mr. Steven and Dr. Carol Batoff  
 Patricia P. Baum  
 Bruce and Polly Behrens  
 Dr. Richard G. Bennett and Mr. Andrew Frake  
 Dr. Gregory K. Bergey and Dr. Sevil Yasar  
 Natalie Blum  
 Dr. Doreen Bolger  
 Mr. and Mrs. Perry J. Bolton  
 Christine and Frank Bonanno  
 Peter Bowe and Barbara Stewart  
 Dorothy Boyce and John Ogden  
 Mr. Charles Brickbauer and  
 Mr. Bernhard Hildebrandt  
 Eddie C. & C. Sylvia Brown

Mrs. Sandra Brushart  
 Ms. Diane Cho and Mr. David Benn  
 Sherry and Stuart Christhilf  
 Tara Balfe Clifford  
 Mr. Tom E. Cole  
 Stiles Tuttle Colwill and Jonathan Gargiulo  
 Mrs. John C. Cooper III  
 Mr. and Mrs. William H. Cowie, Jr.  
 Mr. John Davison  
 Louis and Barbara Denrich  
 Carol and Jerry Doctrow  
 Dr. and Mrs. Daniel Drachman  
 Mrs. Brenda Edelson  
 Larry Eisenstein and Robin Zimelman  
 Mr. and Mrs. Philip D. English  
 Hartley Etheridge  
 Mrs. Stephen W. Feiss  
 Dr. and Mrs. Ira Fine  
 Mr. and Mrs. David H. Fishman  
 Ms. Nadine L. Fontan and Dr. Oliver D. Schein  
 John and Berthe Ford  
 Elaine Freeman  
 Dr. and Mrs. Donald S. Gann  
 James and Edith Hoyt Garrett  
 Craig M. Gayhardt  
 Judith M. Gibbs  
 Eden Goldberg Fund



Dr. and Mrs. Morton Goldberg  
Eileen and Brian Goldman  
Ms. Brigid Goody  
Marguerite Mullan Greenman  
Nanette and Irvin Greif, Jr.  
Mr. and Mrs. Jack S. Griswold  
Mrs. E. Phillips Hathaway  
Mr. Larry J. Hawk  
Ellen M. Heller and Shale D. Stiller  
Betsy and George Hess  
Mrs. Martin S. Himeles, Sr.  
Richard J. and Margaret Conn Himelfarb  
Gina and Daniel Hirschhorn  
Paula Hoffberger  
David and Elizabeth J. Himelfarb Hurwitz  
Ms. Nancy Hutton and Mr. Larry Wissow  
Ms. Connie E. Imboden and  
Dr. Patricia Dwyer  
Mr. and Mrs. Sanford G. Jacobson  
Claire Broido Johnson and Chad Johnson  
Brigitte and Nelson Kandel  
Peter T. Kandel and  
Marion Hoogstraten Kandel  
Virginia M. Karr  
Richard and Judith Katz  
Carla and Alex Katzenberg  
Linda and Arnold Kaufman  
Haig and Lilli Kazazian  
Townsend and Bob Kent  
Robert B. Kershaw and David E. Shafto  
Mrs. David W. Kornblatt  
Mr. and Mrs. Jay M. Kramer  
Mrs. John H. Laporte, Jr.  
Marie Lerch and Jeff Kolb  
Marilyn and Robert Levin  
Mr. and Mrs. Vernon L. Lidtke  
Delegate Brooke Lierman & Mr. Eben Hansel  
Darielle and Earl Linehan  
Mr. William W. Magruder  
Margaret Waxter Maher  
Pam and Allan Malester  
Robert and Susan Mathias  
Mr. Stephen Mazoh  
Douglas and Lynn McCorkle  
Lloyd E. Mitchell Foundation  
Mrs. Angela Munitz  
Mr. J. William Murray  
Heather and Jim Murren

Susan and Stuart Nathan  
Mr. and Mrs. John M. Nehra  
Mr. and Mrs. Ashton Newhall  
Mr. Charles Noell  
Lee and Marilyn Ogburn  
Fiona Ong and Jeffrey Seibel  
Linda Hambleton Panitz  
E. Magruder Passano, Jr.  
Ellen L. Patz  
Nancy Patz and Patrick Harrington  
Dr. John W. Payne and Jane Champe Payne  
Mrs. Helene Penn  
The Pennyghael Foundation, Inc.  
Mrs. Tamara S. Plant  
Mr. and Mrs. John B. Powell, Jr.  
Peter E. Quint  
Amy Eva Raehse and David Tomasko  
Marsha and John Ramsay  
Lynn and Phil Rauch  
Charles and Paula Rees  
George A. Roche  
Mr. and Mrs. Henry A. Rosenberg, Jr.  
Mr. Lance A. Roth  
Ms. Joan D. Rothschild  
Mr. and Mrs. John Sacchi  
Beryl and Philip Sachs  
Mrs. Lainy LeBow Sachs  
Paul S. Sarbanes  
Barbara K. Scherlis  
Dr. and Mrs. Robert K. Schreter  
Susan B. Schuster  
Jacob S. Shapiro Foundation by Jane  
and Stanley F. Rodbell  
Kathy and Sandy Shapiro  
Drs. Margaret and Steven Sharfstein  
Mrs. Jerome H. Sherman  
Yoshinobu and Kathleen Shiota  
Burr and Judi Short  
Joy and Steven Sibel  
Deborah and Harvey Singer  
John Singer  
Jim and Sandy Smith  
Mrs. Eleanor L. Solomon  
Gail and Ronald Spahn  
Helene and Michael Stein  
Lisa A. Stern and Robert A. Rombro  
The Stoneridge Fund of Amy and  
Marc Meadows

Bill and Lisa Stromberg  
Harriet Stulman  
Brian and Susan Sullam  
Marinos and Sebbie Svolos  
Rebecca and Andrew Swanston  
Christine and Taymour Tamaddon  
Barbara J. Trimble  
David and Sharon Tufaro  
Ms. Roberta Van Meter and Mr. Ronald Stiff  
Mrs. Umberto VillaSanta  
Mr. and Mrs. Charles L. Wagandt, II  
Dr. and Mrs. Patrick C. Walsh  
Andrea and John Waterhouse  
The Honorable and  
Mrs. Thomas J. Waxter, Jr.  
Loren J. and Judith G Western  
Charitable Fund  
Mr. Joseph P. Wetherington  
Mary Bailly Wieler  
Phyllis and Marc Winner  
Wolman Family Foundation  
Chris and Jim Wright  
Ms. Jean Wyman  
Carol and Chris Yoder

## **CONTRIBUTOR PROGRAM**

### **Fellow \$750 – \$1,499**

Anonymous  
Rick Berndt  
Bunny Bernstein  
Dr. and Ms. Cornelius P. Darcy  
Mrs. Robert B. Deford, Jr.  
Mr. and Mrs. Lewis Diuguid  
Mr. and Mrs. Sherlock S. Gillet, Jr.  
Mr. and Mrs. Thomas W. W. Haines  
Ms. Patricia A. Harcarik and  
Mr. Carlton R. Nelson  
Bruce D. and MaryAnn Henderson  
Ms. L. Kristine Hoffman and  
Mr. Paul D. Raschke  
Ms. Lee Hoyt and Mr. Pierce Dunn  
Ms. Dorothy B. Krug  
Dr. Juliette Lecomte and  
Dr. Christopher Falzone

Dr. and Mrs. Yuan C. Lee  
Mr. and Mrs. William M. Levy  
Ms. Margaret Long  
Mrs. Judith Campbell McKennis and  
Dr. Quentin McKennis  
Mr. and Mrs. Timothy E. Parker  
Mr. and Mrs. James Piper III  
Dr. and Mrs. Frederick G. Preis  
Mr. James R. Ransom  
Mr. and Mrs. Robert W. Ross  
Dr. and Mrs. David M. Schwaber  
Mr. and Mrs. Thomas Schweizer, Jr.  
Mr. and Mrs. Stephen D. Shawe  
Mr. and Mrs. Wilbert H. Sirota  
Mr. and Mrs. Bruce Stuart  
Ms. Judy Szala and Mr. Edward MacKay  
Mr. Raymond G. Truitt and  
Ms. Mary K. Tilghman  
Mr. and Mrs. James A. Ulmer III

### **Sponsor \$500 – \$749**

Mr. and Mrs. Ronald G. Abrams  
Dr. Anne Agee  
Dr. and Mrs. Thomas E. Allen  
Ms. Marin Alsop and Ms. Kristin Jurkscheit  
Ms. Marjorie Anderson  
Ms. Virginia Anderson  
Ms. Linda C. Barclay  
Mrs. Frederica B. Baxter  
Mr. Lance Bendann  
Dr. Murry D. Bentley and Ms. Linda Clark  
Mrs. Toni Berger and Dr. Bruce W. Berger  
Dr. Christopher T. Bever and  
Dr. Patricia A. Thomas  
Mr. and Mrs. Marc P. Blum  
Ms. Lois Borgenicht  
Barbara and Edward J. Brody  
Ms. Jennifer Burdick  
Ms. Virginia T. Campbell  
Mrs. Howard Cohen  
Mrs. Caroline A. Coleman  
Jan and Trent Cowart

Mr. and Mrs. Donald D'Agati  
James A. Daily  
Mr. and Mrs. Roger Dankert  
Dr. and Mrs. Howard A. Davidov  
Mr. and Mrs. Marvin A. Dean  
Mr. James DeGraffenreid and  
Dr. Mychelle Y. Farmer  
Mr. and Mrs. Walter B. Doggett III  
Mr. and Mrs. Paul Feldman  
Mr. and Mrs. William A. Feustle, Jr.  
Dr. Esther Fleischmann and Dr. Peter Griffith  
Mr. Andrew Frankos-Rey  
Mr. and Mrs. Matthew Freedman  
Mr. and Mrs. Stanley C. Gabor  
Ms. Breon Gilleran and Dr. Robert Roca  
Susan Gillette  
Dr. and Mrs. Sheldon D. Glass  
Ms. Joanna D. Golden  
Mr. William T. Greenlaw  
Mr. Sandy Gross and Ms. Anne Conaway  
Mr. and Mrs. Henry L. Gutman  
Mr. James F. Hart  
Dr. and Mrs. Alvin Hathaway

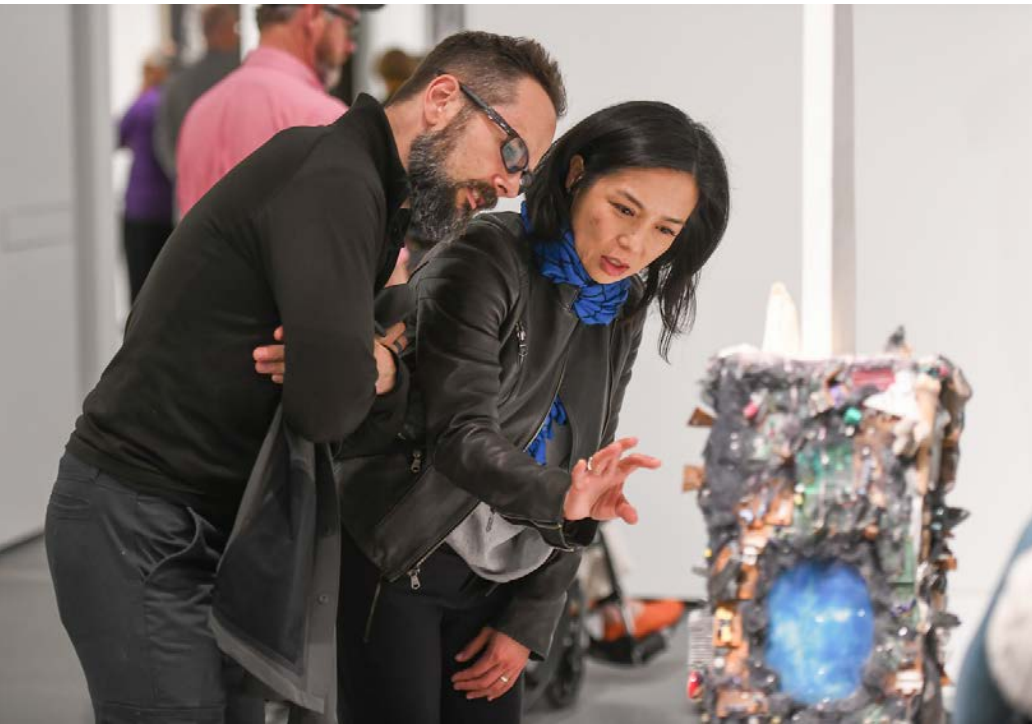
Mrs. Janet A. Headley  
Ms. Eva P. Higgins  
Mr. and Mrs. Martin S. Himeles, Jr.  
Mrs. Jen Hobbins  
Mr. and Mrs. Thomas R. Hobbs  
Ms. Elizabeth Hodnicki  
Mr. and Mrs. Ralph H. Hruban  
Mrs. Francis N. Iglehart, Jr.  
Ms. Rodica I. Johnson  
Ms. Claudette V. Jones  
Mrs. Barbara Judd  
Mrs. Samuel S. Kahan  
Mr. and Mrs. Leonard Kaplan  
Mr. and Mrs. Sheldon Katz  
Ms. Shirley Kaufman  
Ms. Margaret F. Keane  
Dr. and Mrs. Robert Keehn  
Mr. David Kimball and Mr. Darnell W. Burfoot  
Mrs. Joan G. Klein, Jr.  
Dr. and Mrs. Alfred Kronthal  
Mr. Barry Kropf  
Kelly and Fritz Lance  
Mr. Robert Landau

Ms. Jennifer Lane and Mr. Peter Moore  
Ms. Susan L. Larimer  
Donna Ledbetter and Steven Foster  
Mr. Robert Z. Leizure and  
Ms. Meredith B. Felter  
Mrs. Sara W. Levi  
Ms. Ellen Lupton  
Mr. Robert I. McCormick  
Mr. and Mrs. Gerald Mondell  
Mr. and Mrs. Terry Moore  
Ms. Barbara L. Mueller  
Mrs. Diana Edwards Murnaghan  
Ms. Terry L. Musika  
Ms. Cathy J. Neuman  
Ms. Achsah Odonovan  
Dr. Bodil Ottesen  
Mr. and Mrs. Richard M. Patterson  
Mr. and Mrs. William D. Pence  
Ms. Nina Platt  
Mr. and Mrs. Mark Pollak  
Mr. and Ms. William Reynolds  
Mr. and Mrs. Jan Paul Richter  
Wendy S. Rosen  
Ms. Rosina Rubin and Mr. Jeff Rose  
Dr. and Mrs. Malcolm Rubinstein  
John and Sally Ruppert  
Mrs. Lelia R. Russell  
Ms. Diane L. Ryan  
Ms. Katie A. Schaeffer and  
Mr. Tony Schaeffer  
Mr. Michael Schaub  
Gail G. Schulhoff  
Mrs. Eleanor V. Schwark  
Ms. Marjorie Shapiro  
Mr. and Mrs. Harvey Shein  
Dr. and Mrs. Charles I. Shubin  
Mr. and Mrs. Ronnie Silverstein  
Mr. and Mrs. Ellwood A. Sinsky  
Wayne F. and F. Louise Smith  
Mr. Thomas Spencer  
Mrs. Nancy H. Spies and Mr. Thomas P. Spies  
Ms. Pamela Stevens

Ms. C. Van Leuven Stewart  
Dr. Nisha Chandra Strobos  
Mr. and Mrs. Richard Thomas  
Mr. and Mrs. Roger H. Tinius  
Ms. Judith Tobin and Mr. Jeffrey Lindemuth  
Mr. Brian B. Topping  
Judy and Peter Van Dyke  
Dr. Charles E. Walker  
Ms. Camille B. Wheeler  
Ms. Jeri S. Wilkins  
Ms. Gertrude S. Williams  
Mr. and Mrs. Hiram Woodward  
Mr. Richard F. Wormsbecher and  
Ms. Joanna M. Pyper

**Sustainer  
\$250 – \$499**

Anonymous  
Ms. Edith D. Albrecht  
Mr. and Mrs. Charles Alderfer  
Mr. and Mrs. Scott Allen  
Dr. Ann H. Allison  
Mrs. Joanne M. Althoff  
Ms. Ally Amerson and Mr. Jeffrey Nover  
Mr. John A. Andryszak  
Mr. and Mrs. Robert Armenti  
Ms. Brenda K. Ashworth and Donald F. Welch  
Mrs. Thomas H. G. Bailliere, Jr.  
Robert W. Baker  
Mr. and Mrs. Thomas Baker  
Ms. Ruth Banks-Crowder  
Dr. Barbara F. Bass  
Dr. and Mrs. Theodore M. Bayless  
Mary Ann and John Beckley  
Mr. and Mrs. Arthur F. Bell, Jr.  
Mrs. Florence Berdand  
Mr. and Mrs. David Berman  
Dr. Thomas E. Berry  
Mr. and Mrs. William E. Bettridge  
Ms. Beverly H. Betz  
Mrs. Valerie F. Binder  
Mr. Douglas Blackstone and



Ms. Judith Krummeck  
Mr. J. M. Boardman  
Ms. Brenda J. Bodian and  
Mr. Antonio Consolandi  
Dr. and Mrs. Charles R. Boice  
Mr. and Mrs. John J. Boland  
Elizabeth and John Bond  
Dr. Stephen Bono  
Ms. Shelley J. Bontz  
Mr. Michael Booth and Ms. Kristine Smets  
Denis and Constance Bourke  
Mrs. Richard E. Bowe  
Mrs. Mary Louise W. Bowman  
Mr. and Mrs. James T. Brady  
Ms. Sue Bremner  
Mr. Henri Bretaudeau  
Dr. and Mrs. E. James Britt  
Dr. Jonathan Bromberg and  
Mrs. Barbara Scott  
Ms. Julia Brown  
Laura R. Burrows  
Ms. Judy Cahn  
Ms. Loretta C. Cain  
Ms. Deborah W. Callard  
Mr. John Cammack and  
Ms. Kimberly Warren  
Dr. and Mrs. Michael A. Carducci  
Mr. and Mrs. Anthony Carey  
Mr. Shaun Carrick and Mr. Ronald Griffin  
Ms. Barbara R. Carter  
Ms. Susan Cashman  
Mrs. Donna Catling  
Dr. Richard Chaisson and Ms. Judith Harding  
Amy and John Chay  
Mrs. Ashley Chertkof  
Ms. Sue Lin Chong  
Ms. Tracey Chunn  
Mr. and Mrs. James A. Clauson  
Dr. Cathie Chung and Dr. John Clements  
Mr. Thomas Clifton  
Mr. and Mrs. Harry Cocoros  
Mr. and Mrs. Fred Cogswell

Mr. and Mrs. Richard Cole  
Mr. Steven P. Collier  
Mr. and Mrs. Beverley C. Compton, Jr.  
Ms. Kathy Condray and Ms. Melinda Condray  
Mr. and Mrs. Benjamin Cone, Jr.  
Ms. Judith Conners  
Mr. and Mrs. David W. Cooke  
Mr. and Mrs. Stephen Cooper  
Dr. and Mrs. Bruce Copeland  
Mrs. Alfred I. Coplan  
Mr. and Mrs. Richard Corcoran  
Mr. and Mrs. William Couper  
Mr. and Mrs. George W. Cox  
Ms. Sally K. Craig  
Mr. and Mrs. J. Joseph Credit  
Ms. Pamela Crockett  
Mr. and Mrs. Robert G. Cumming  
Mr. and Mrs. Ernest Czyryca  
Ms. Liz D'Antonio  
Dr. and Mrs. F. J. Dagher  
Mr. Alexander Daignault  
Dr. and Mrs. David F. Dalury  
Mrs. Anne Allen B. Dandy  
Mr. Paul Daniel and Ms. Linda DePalma  
Mr. and Mrs. William F. Dausch  
Mrs. Lynn R. Davidov  
Ms. Deanna Dawson  
Mr. Curtis L. Decker  
Sherry and Vincent DeFrancisci  
Dr. Thomas J. Dekornfeld  
Dr. and Mrs. Steven Delaveris  
Mr. Vincent J. Dell'Orto  
Ms. Mary Cole Dickerman  
Mr. and Mrs. Ron Diegelman  
Mr. and Mrs. Patrick Dieter  
Miss Diane DiSalvo  
Dr. Peyton A. Eggleston  
Mr. Barry Eigen  
Dr. Frank Eisenberg and  
Judge Catherine C. Blake  
Ms. Joyce L. Epstein  
Dr. Sonia Estruch

Mr. Jeffrey L. Fahnestock  
Ms. Michaeline R. Fedder  
Dr. Susan Feigelman and Mr. Cliff Essman  
Ms. Janet Felsten and Mr. Andrew Lemer  
Ms. Elizabeth Ferrugia  
Mr. and Mrs. Richard Fidler  
Mr. and Mrs. Arthur L. Fleischer  
Mr. and Mrs. David Fleishman  
Mr. and Mrs. Bruce W. Fleming  
Mr. and Mrs. Michael E. Flinton  
Ms. Charlotte B. Floyd  
Mr. John Forgach  
Ms. Abigail and Mr. Ryan Frederick  
Mr. Benedict Frederick  
Mr. and Mrs. Francis G. French  
Mr. and Mrs. Howard Friedel  
Ms. Kathleen O'Ferrall Friedman  
Mr. Ira Friedrich and Ms. Carol A. Bucher  
Dr. William F. Fritz  
Ms. Noreen A. Frost  
Ms. Judith P. Fulton and Mr. Mark Howard  
Mr. and Mrs. Robert A. Fulwiler  
Mrs. Wilma Gabbay  
Mr. and Mrs. Philip Gallant  
Dr. and Mrs. Earl P. Galleher, Jr.  
Mr. and Mrs. Stanford Gann  
Mr. and Mrs. Ira Gansler  
Mr. and Mrs. Cutberto Garza  
Mr. and Mrs. Austin H. George  
Mr. A. C. George and Dr. Kathryn T. George  
Ms. Phoebe Gilchrist  
Mr. and Mrs. Andrew Gilchrist  
Mr. and Mrs. Gene Gillespie  
Mr. Kim Z. Golden and Ms. Jean Suda  
Mr. and Mrs. Herbert Goldman  
Dr. and Mrs. Leonard H. Golombek  
Mr. and Mrs. Mark A. Goodman  
Mr. James D. Goodyear and Ms. Indira Kotval  
Ms. Judith A. Gottlieb  
Dr. Niko Graff  
Dr. and Ms. Edward Gratz

Mr. and Mrs. Harold F. Graul, Jr.  
Dr. Laura Green and Mr. Basil Rousos  
Mr. W. Arthur Grotz, Jr.  
Mr. Charles L. Gugliotta  
Mr. and Mrs. H. Hamilton Hackney, Jr.  
Ms. Louise A. Hager  
Patricia and Peter Handal  
Mr. Timothy L. Hanford  
Mr. and Mrs. David Harley  
Ms. Cornelia E. Harper  
Mr. Michael Harris and  
Ms. Claudia McDonough  
Ms. Mary Jo Hartka  
Ms. Claire T. Hartman  
Ms. Lisa Hausner  
J. S. Heald and P. L. Heymann  
Mr. and Mrs. John Heyrman  
Dr. and Mrs. Arthur M. Hildreth  
Mr. and Mrs. Gregory Hill  
Martha N. Hill  
Ms. Suzanne P. Hill  
Michael Hill and Patty Dann  
Mr. and Mrs. Samuel Himmelrich, Jr.  
Mr. and Mrs. Robert Hirsch  
Dr. Ben F. Hobbs and Ms. Julie R. McDill  
Mr. and Mrs. David B. Hoffberger  
Mrs. Carol S. Holland  
Mr. Harry C. Holloway and Ms. Joyce Chung  
Mr. Al B. Honick  
Mrs. Anne D. Hopkins  
Mr. and Mrs. Martin Horan  
Mr. and Mrs. Louis Horst  
Mrs. Ann Hughes  
Mr. William A. Hylton, Jr.  
Dr. and Mrs. Michael Ichniowski  
Mr. Paul Jacob III  
Ms. Dana S. Johns  
Mr. George Jones  
Mrs. Jean M. H. Jung  
Dr. and Mrs. Murray A. Kalish  
Mr. and Mrs. Larry Kamanitz  
Dr. and Mrs. Harold K. Kanarek



Mr. Andy Johnson and Ms. Jennifer Kane  
Deana Karras  
Mrs. Kristin Kast  
Dr. and Mrs. Leon D. Katz  
Ms. Joyce S. Keating  
Dr. and Mrs. Thomas Kelly  
Mr. Curtis Kennedy and Mr. Scott D. Myers  
Mr. Jeffrey Kent  
Mr. and Mrs. Charles P. Kernan  
Mr. and Mrs. Edwin S. Killinger  
Mr. and Mrs. James D. Klau  
Mrs. Ronnie Kleiman  
Mr. and Mrs. Lawrence Kleinman  
Mr. Mark E. Klotzbach and  
Ms. Marcy A. Feeney  
Ms. Alexandra S. Kouwenhoven  
Mr. Geoffrey Kroll  
Thomas Kurek and  
MacKenzie Roebuck-Walsh  
Ms. Coleen Lambdin  
Ms. Mary A. Lambros  
Mr. and Mrs. Julian L. Lapides  
Ms. Elaine F. Laube  
Mr. and Mrs. Albert Laubner  
Drs. Charles and Joan Lawrence  
Tim and Gabrielle Lawrence  
Mr. Stephen Leaderman  
Mr. Harry and Mrs. Beth Lebow  
Dr. Irwin Leder and Ms. Anna Leder  
Dr. Gregory K. Lehne  
Mr. and Mrs. Daniel Lenehan  
Dr. and Mrs. Harry Letaw, Jr.  
Dr. and Mrs. Martin A. Levin  
Ms. Suzanne Levin-Lapides  
Mr. and Mrs. Craig Lewis  
Mrs. Joanne M. Linder  
Mr. Gerard P. Lioi  
Dr. and Mrs. Robert Liss  
Dr. and Mrs. Robert Loeb  
Dr. and Mrs. Donlin Long  
Ms. Sarah Longaker  
Mr. and Mrs. Ronald J. Lorentzen

Henry R. and Sarah Fenno Lord  
Mr. and Mrs. Mark Lund  
Mr. and Mrs. Scott A. Lutrey  
Mrs. Philip R. Macht  
Ms. Amy Macht and Mr. George Grose  
Ms. Ellen Mack  
Dr. and Mrs. Jonathan Maltz  
Ms. Joanne A. Mandato  
Mr. and Mrs. Robert Manfredi  
Ms. Mary Mangione  
Mr. and Mrs. Bruce Marshall  
Ms. Colleen Martin-Lauer  
Ms. L. Paige Marvel and Mr. Robert H. Dyer  
Mr. and Mrs. Donald Maxwell  
Mrs. John M. McCall, Jr.  
Mrs. M. Patricia McCall-Paquin  
Dr. Merle C. McCann and  
Mr. Jared Christopher  
Mrs. William J. McCarthy  
Ms. Lorinda R. McColgan  
Mr. and Mrs. John S. McDaniel III  
Dennis and Allison McGlone  
Dr. and Mrs. James F. McKenney II  
Ms. Michael R. McMullan  
Mr. Mark McMullen and  
Mr. James D. Morrison  
Mr. Donald P. McPherson and  
Mrs. Anna M. Teaff  
Mr. and Mrs. Marc McPherson  
Mr. and Mrs. Jack Mendelsohn  
Mr. John C. Merrill and Ms. Julia A. Barker  
Mr. and Mrs. William Meyers II  
The Honorable Barbara A. Mikulski  
Mrs. Stephanie F. Miller  
Mr. and Mrs. William H. Miller IV  
Mr. and Mrs. Michael Millin  
Mrs. Anne Modarressi  
Mr. Michael R. Moldover  
Ms. Diane Molner  
Ms. Terry H. Morgenthaler and  
Mr. Patrick J. Kerins  
Mr. and Mrs. Charles Morse

Ms. Helaine Sue Morss  
Mr. Clyde Munz and Ms. Robin Bainbridge  
Dr. and Mrs. Michael Murphy  
Dr. Patrick A. Murphy and  
Dr. Genevieve Losonsky  
Mr. and Mrs. Josef Nathanson  
Mrs. Virginia W. Naylor and  
Mr. James L. Potter  
Mr. David and Mrs. Betsy Nelson  
Dr. and Mrs. Paul M. Ness  
Ms. Elizabeth T. Neubauer  
Mr. Stephen Nichols  
Mr. and Mrs. Joseph Nigro  
Ms. Elizabeth L. Nilson  
Mr. and Mrs. David O'Callaghan  
Mr. and Mrs. James P. O'Meara  
Mr. and Mrs. Thomas Obrecht  
Mr. and Mrs. Charles F. Obrecht  
Ms. Theresa Ottery and Mr. Thomas P. Norris  
Margeret A. Owens  
Mr. and Mrs. Adam Panarese  
Mr. and Mrs. James Parks  
Ms. Susan Patz  
Mr. Hans S. Pawlisch  
The Reverends Patricia and Norman Payne  
Mr. Leonard Pennington  
Dr. Elizabeth H. Pepple and  
Dr. James M. Pepple  
Mr. Philip J. Perkins and Ms. Margaret Allen  
Dr. and Mrs. Jonathan Philipson  
Mrs. Dorothy B. Phipps  
Dr. and Mrs. Richard N. Pierson III  
Ms. Jo Ann Pinder  
Ms. Penelope L. Pine  
Mrs. Florence W. Platt  
Ms. Carolyn Polowy  
Dr. Virginia T. Pond  
Mr. Garrett Power  
Mr. Mirko Prestel  
Mr. and Mrs. Robert E. Prince  
Dr. Terry G. Pritt  
Mr. John M. Prugh

Lisa Pupa  
Mr. Daniel Puzio  
Susan and John Racanelli  
Joan S. and Rajeev D. Ranadive  
Mrs. Paula J. Rasera  
Mr. and Mrs. Dennis Rawlins  
G. Edward Reahl, M.D.  
Mr. Ronald Reifler  
Ms. Cyndy Renoff and Mr. George Taler  
Mrs. Lynn Rhombert  
Ms. Ellen Richardson  
Ms. Elizabeth Richter  
Ms. Jean Marie Ricketts and  
Mr. Lawrence Appel  
Leslie and Thomas Ries  
Ms. Mary L. Rimkunas  
The Honorable Mary Ellen T. Rinehardt  
Ms. Elizabeth Ritter and  
Mr. Lawrence N. Koppelman  
Mr. and Mrs. Larry Robinson  
Mrs. Marlyn G. Robinson  
Mr. and Mrs. Matthew Rock  
Prof. Steven Rokita  
Ms. Ingrid R. Rose  
Mr. and Mrs. Lee B. Rosenberg  
Dr. Dorothy Rosenthal and  
Mr. William A. Nerenberg  
Mr. and Mrs. Peter B. Rosenwald  
Gary and Naomi Rosner  
Terrence Ross  
Mr. Richard Rubin and  
Ms. Kathleen Sweeney  
Mrs. Lynn Rubin  
Debra and Joseph Rubino  
Mr. John A. Rudesill and Ms. Linda E. Baer  
Dr. and Mrs. Shalom Saar  
Sheila K. and Stephen H. Sachs  
Dr. and Mrs. Marvin M. Sager  
Mr. and Mrs. Arnold Sagner  
Mr. and Mrs. Donald S. Saiontz  
Mary and David Salkever  
Mr. and Mrs. Phil Samper

Ms. Doris Sanders  
 Mr. and Mrs. Sheldon Sandler  
 Mr. Robert and Mrs. Carol Sapora  
 Mrs. Carol P. Saucier  
 Mr. and Mrs. Gerald Savitsky  
 Mr. and Mrs. Robert W. Schaefer  
 Ms. Ivy Schram  
 Mr. and Mrs. Stephen T. Scott  
 David and Norma Scott  
 Mrs. Merle and Mr. Steven Seigel  
 Mr. and Mrs. Paul Selnick  
 Ms. Donna J. Senft and Ms. Rose A. Glorioso  
 Ms. Claudia Sennett and Mr. Douglas Kelso  
 Mr. Norman A. Sensinger  
 Dr. and Mrs. Carlton C. Sexton  
 Brad and Amanda Shapiro  
 Mr. and Mrs. John W. Sheldon  
 Ms. Barbara C. Shelhoss  
 Mr. and Mrs. Michael Shylanski  
 Mr. Philip Shivers and Ms. Selby Hall  
 Mr. Craig Singer and Mr. George Garmer  
 Mr. and Mrs. Charles Skinner  
 Ms. Ann M. Smith  
 Mr. and Mrs. Donald V. Smith  
 Ms. Judy L. Smith  
 Mr. Turner B. Smith  
 Mrs. Elizabeth R. Spear  
 Barbara Portnoy Spector  
 Ms. Rita St. Clair and Mr. Joseph Sheppard  
 Ms. Wendy Stanne  
 Mr. Davis L. Statton, Jr.  
 Mr. and Mrs. Robert Stecher  
 David and Carol Stern  
 The Stieff Foundation  
 Mr. and Mrs. Mark Stokes  
 Mr. and Mrs. Daniel Storch  
 Ms. June E. Streckfus  
 Mr. and Mrs. Michael P. Sullivan  
 Mr. and Mrs. Stephen Sutton  
 Mr. and Mrs. Winston Tabb  
 Dr. and Mrs. John Talbott  
 Drs. Ellen and Bruce Taylor

Ms. Clytie W. Taylor  
 Ms. Sandra D. Teitelbaum  
 Mr. and Mrs. Luis Terol  
 Drs. Chloe Thio and Eric Lowenthal  
 Ms. Madeline Y. Tims  
 Mr. Gary R. Tobia  
 Dr. E. F. Torrey and Ms. Barbara Torrey  
 Mr. and Mrs. Craig Townsend  
 Ms. Elizabeth H. Trimble  
 Drs. Cornelia and Edward Trimble  
 Mr. and Mrs. Richard J. Truelove  
 Mr. and Mrs. Jon Tuck  
 Dr. and Mrs. Henry Tyrangiel  
 Dr. and Mrs. Raghuvver Vallabhaneni  
 Ms. Andrea J. Van Arsdale and  
 Mr. Jeffrey G. Krimmel  
 Ms. Linda Vaughn  
 John and Phyllis von Stade  
 Mrs. Mary Frances P. Wagley  
 Dr. and Mrs. Mark Wagner  
 Dr. and Mrs. Edward Wallach  
 Ms. Marguerite Walsh and Mr. Bernard Finn  
 Mr. and Mrs. Ronald G. Walters  
 Dr. and Mrs. Jerry Ward  
 Joseph and Sabina Warfield  
 J. W. Thompson Webb and  
 Ellen Remsen Webb  
 Mr. Tim Webster and Mr. Ernest Norden  
 Mr. and Mrs. S. Nelson Weeks  
 Mrs. Sylvia E. Wehr  
 Mr. and Mrs. Jay Weiss  
 Mr. and Mrs. Brian Whittier  
 Mr. Sander L. Wise  
 Dr. Frank R. Witter  
 Mr. and Mrs. John Woloszyn  
 Linda and Amy Woolf  
 Mr. Robert M. Vogel and Ms. Helena Wright  
 Mr. and Mrs. Thomas W. Wright  
 Ms. Angela Zeit  
 Mr. and Mrs. Donald W. Zurwelle



## **CORPORATE COUNCIL**

### **Founder's Level \$25,000+**

T. Rowe Price Foundation, Inc.

### **Chairman's Level \$10,000 – \$24,999**

Bank of America

Lord Baltimore Capital Partners, LLC

PNC Bank

The Whiting-Turner Contracting Company

Wilmington Trust

### **Director's Level \$5,000 – \$9,999**

American Trading and Production  
Corporation

Bloomberg Philanthropies

CareFirst BlueCross BlueShield

Transamerica

Whiteford, Taylor & Preston LLP

### **Executive Level \$2,500 – \$4,999**

Brown Advisory

Hord Coplan Macht

Investment Counselors of Maryland LLC

McCormick & Company, Inc.

Quinn Evans Architects

RK&K

Ziger/Snead LLP Architects

### **Contributor Level \$1,000 – \$2,499**

Adajian & Nelson, Inc.

Delbert Adams Construction Group LLC

The Harbor Bank of Maryland

HMS Insurance Associates, Inc.

Linwoods Restaurant and Catering

Marshall Craft Associates

Mueller Associates, Inc.

MurthyNAYAK Foundation and  
Murthy Law Firm

T. Rowe Price Associates, Inc.

### **\$500 – \$999**

Highview Construction Company

Lupin Inc.

### **\$250 – \$499**

Eddie's of Roland Park

Payal Arts International

Sebian Associates, Inc.

## **FOUNDATION SUPPORT**

### **\$20,000+**

The Bunting Family Foundation  
LaVerna Hahn Charitable Trust  
The Hecht-Levi Foundation, Inc.  
Dorothy Wagner Wallis Charitable Trust

### **\$10,000 – \$19,999**

Anonymous

### **\$5,000 – \$9,999**

Victoria and Sidney Lansburgh Charitable  
Foundation  
Macht Fund of THE ASSOCIATED  
Margaret B. Mack Fund of the Community  
Foundation for Greater New Haven  
The Peggy Meyerhoff Pearlstone  
Foundation, Inc.  
Earle & Annette Shawe Family Foundation

### **\$1,000 – \$4,999**

Campbell Foundation, Inc.  
Eliasberg Family Foundation, Inc.  
The David & Barbara B. Hirschhorn  
Foundation  
The Philip & Harriet Klein Foundation, Inc.

## **GIFTS IN-KIND**

Baltimore Business Journal  
Christie's  
Gertrude's Chesapeake Kitchen  
Loane Bros., Inc.  
Post Typography, LLC  
Shawe Rosenthal LLP  
Sotheby's

## **BEQUESTS**

Estate of Margaret H. Cooke  
Estate of Allen A. Davis  
Estate of Amanda W. Hopkins  
Estate of Beatrice Levi  
Estate of Elizabeth L. Oliver  
Estate of Marjorie W. Ottenheimer  
Estate of Dorothy M. Scott

## **MATCHING GIFTS**

Annie E. Casey Foundation  
Bank of America Charitable Foundation  
Brown Capital Management  
Exelon  
ExxonMobil Foundation  
IBM Corporation  
Illinois Tool Works Foundation  
Robert Wood Johnson Foundation  
Stanley Black & Decker Corporation  
T. Rowe Price Foundation, Inc.

## **YEAR-END APPEAL**

Mr. and Mrs. Nelson H. Adlin  
Dr. and Mrs. Aristides C. Alevizatos  
Mrs. Thomas H. G. Bailliere, Jr.  
Ms. Debra Baker and Mr. Thomas Cox  
Mr. Gregory Baranoski and Mr. Lucio Gama  
Richard and Jane Barton  
Prof. and Ms. John Baty  
Mr. and Mrs. Herbert J. Belgrad  
Dr. and Mrs. Charles R. Boice  
Mrs. Richard E. Bowe  
Dr. and Mrs. Joseph W. Burnett  
Mr. Christopher Cole  
Ms. Sally K. Craig  
Dr. and Mrs. David F. Dalury  
Dr. Thomas J. Dekornfeld  
Ms. Mary K. Dilli  
Frank and Mary Emerson  
Ms. Rhea Feikin  
Ms. Sally A. Fiske  
Ms. Patricia Foster and Mr. Derek Joost  
Mr. Andrew Frankos-Rey  
Mr. and Mrs. Thomas L. Freudenheim  
Dr. and Mrs. Ivan S. Fried  
Mr. Francis X. Gallagher, Jr.  
Mrs. Susan Gray  
Mr. and Mrs. Edward Gross  
Mr. and Mrs. Joel Grossman  
Carl and Karen Haller  
Mrs. Lisa Ide and Mr. Andrew Ide  
Ms. Lynne Kase  
Mrs. Judy Kastenber  
Mrs. Katherine Kenny  
Kim and Stephen Kilduff  
Mr. Harry and Mrs. Beth Lebow  
Ann and Robert Leheny  
Mr. and Mrs. William M. Levy  
Mr. and Mrs. Craig Lewis  
Mrs. Joanne M. Linder  
Mr. and Mrs. Ronald J. Lorentzen  
Mr. Colin Mackenzie and Ms. P. Christina Imle

Ms. Joanne A. Mandato  
Dr. P. K. McCarter and Dr. Susan McCarter  
Ms. Karen J. McDonough  
Ms. Michael R. McMullan  
Mrs. Charlotte Miller  
Mrs. Stephanie F. Miller  
Mr. Joseph O'Hare  
Mr. and Mrs. Alexander Perry  
Mr. and Mrs. Mark Pollak  
Dr. Virginia T. Pond  
Mr. and Mrs. Garrett Power  
Ms. Jenny S. Ramberg  
Dr. and Mrs. Jerome Reichmister  
Mr. Rich Rimkunas and  
Mrs. Mary MacDonald  
Mr. and Mrs. John Robinson  
Dr. and Mrs. Malcolm Rubinstein  
Mr. and Mrs. John M. Sacchetti  
Dr. and Mrs. John H. Sadler  
Mr. Thomas M. Scalea  
Dr. and Mrs. David M. Schwaber  
Ms. Claire Smith  
Dr. and Mrs. David Spector  
Stan and Donna Ber  
Dr. and Mrs. Damie Stillman  
Dr. and Mrs. Edgar Sweren  
Mr. and Mrs. George N. Thomas  
Ms. Christine L. Thompson  
Mr. John Waters  
Dr. and Mrs. Frank R. Witter  
Mr. Raymond Worley  
Mr. and Mrs. Thomas W. Wright  
Mrs. Anne M. Wyatt-Brown  
Mrs. Martha M. Yeager  
Mr. and Mrs. David N. Young  
Dr. Laurie S. Zabin



# SPECIAL PROGRAM SUPPORT

---

THE BALTIMORE MUSEUM OF ART ACKNOWLEDGES WITH GRATITUDE THOSE WHO MADE GIFTS TO EXHIBITIONS, SPECIAL PROJECTS, AND CAPITAL PROJECTS BETWEEN JULY 1, 2017, AND JUNE 30, 2018.

## PROJECT SUPPORT

---

### \$100,000+

Baltimore City  
Citizens of Baltimore County, with support from the County Council and Baltimore County Commission on Arts & Sciences  
Jacob and Hilda Blaustein Foundation  
The Lois and Irving Blum Foundation  
Suzanne F. Cohen  
Hauser & Wirth  
Lord Baltimore Capital Partners, LLC  
Maryland State Arts Council  
Robert E. Meyerhoff and Rheda Becker  
James S. and Gail P. Riepe Charitable Foundation  
Clair Zamoiski Segal  
The Sheridan Foundation  
State of Maryland  
Ellen W. P. Wasserman

### \$25,000 – \$99,999

A. G. Foundation  
William G. Baker Jr. Memorial Fund  
The Heidi & Brian Berghuis Charitable Gift Fund  
Brandeis University  
Guy E. Flynn and Nupur Parekh Flynn  
Laura L. Freedlander  
Joanne M. Gold and Andrew A. Stern  
Amy L. Gould and Matthew S. Polk, Jr.  
LaVerna Hahn Charitable Trust  
Estate of Amanda W. Hopkins  
The James and Mary Miller Charitable Fund  
Rhoda M. Oakley Trust  
Mrs. Mary Sharp

The Stoneridge Fund of Amy and Marc Meadows

T. Rowe Price Foundation, Inc.  
Transamerica

Dorothy Wagner Wallis Charitable Trust

### \$10,000 – \$24,999

Eddie C. & C. Sylvia Brown  
Gold/Stern Family Charitable Fund  
Howard County Arts Council  
Eileen Harris Norton Foundation  
Estate of Elizabeth L. Oliver  
PNC Foundation  
Post Typography, LLC  
E. Rhodes and Leona B. Carpenter Foundation

Ilene and Michael Salcman  
Stephen M. Salny  
Wells Fargo Foundation

### \$5,000 – \$9,999

Bank of America  
Hemera Foundation  
Gloria B. & Herbert M. Katzenberg Fund  
Mondriaan Fonds  
Estate of Marjorie W. Ottenheimer

### \$1,000 – \$4,999

Gill Wright Bentley  
Jack and Susan Cowart  
Nancy L. Dorman and Stanley Mazaroff  
Carl and Karen Haller  
Margot W. M. Heller  
IBM Corporation  
Estate of Beatrice Levi  
The Harvey M. Meyerhoff Fund, Inc.  
Mary and Paul Roberts

## SUPPORT FOR FREE ADMISSION

---

Ongoing support for free admission at the BMA has been provided through generous endowment gifts from:

The Cohen Family Fund for Free Admission  
The DLA Piper Fund  
Lord Baltimore Capital Partners, LLC  
Mary J. and James D. Miller  
James S. Riepe Family Foundation

## SUPPORT FOR EDUCATIONAL PROGRAMS

---

The Baltimore Museum of Art acknowledges with gratitude the generous support granted by:

The City of Baltimore, with support from the Mayor, City Council, and Baltimore Office of Promotion & the Arts  
Citizens of Baltimore County, with support from the County Council and Baltimore County Commission on Arts & Sciences  
Howard County, with support from the County Executive, County Council, and Howard County Arts Council  
Institute of Museum and Library Services  
National Endowment for the Arts  
The State of Maryland, with support from the Governor, General Assembly, Maryland Department of Business and Economic Development, and Maryland State Arts Council

# ART ACQUISITION FUNDS

---

THE BALTIMORE MUSEUM OF ART  
GRATEFULLY ACKNOWLEDGES  
THE FOLLOWING GIFTS  
OF \$1,000 OR MORE FOR THE  
PURCHASE OF WORKS OF ART  
RECEIVED FROM JULY 1, 2017,  
THROUGH JUNE 30, 2018.

## GIFTS FOR FUNDS FOR ART PURCHASES

---

Heidi and Brian Berghuis  
Mr. and Mrs. Fred Cogswell  
Jane and Worth B. Daniels, Jr. Fund  
Estate of Allen A. Davis  
Nancy L. Dorman and Stanley Mazaroff  
Dr. Peyton A. Eggleston  
The Edward J. Gallagher, Jr. Foundation  
Katherine and Joseph Hardiman  
Ms. Pamela Joyner and Mr. Alfred Giuffrida  
Richard and Judith Katz  
Dr. and Mrs. Allan Krumholz  
Robert E. Meyerhoff and Rheda Becker  
Nancy Patz Reading Fund  
Mr. and Mrs. Jan Paul Richter  
The Rothschild Charitable Foundation:  
Ellen and Linwood Dame, David and  
Hope Rothschild  
Clair Zamoiski Segal  
Ms. Judith Tobin and Mr. Jeffrey Lindemuth

## ENDOWED PURCHASE FUNDS

---

The Abell Foundation Photograph  
Acquisitions Endowment  
Blanche Adler Memorial Fund  
The William G. Baker, Jr. Memorial Fund  
Center for Matisse Studies  
Nathan L. and Suzanne F. Cohen  
Contemporary Art Endowment  
Alice and Franklin Cooley Fund  
Albert H. Cousins Bequest Fund  
Roger M. Dalsheimer Fund  
Decorative Arts Accessions Fund



The John Dorsey and Robert W. Armacost  
Acquisitions Endowment  
W. Clagett Emory Bequest Fund, in Memory  
of his Parents, William H. Emory of A. and  
Martha B. Emory  
The Anna Elizabeth Fehl Endowment Fund  
Charlotte B. Filbert Endowment Fund  
Sidney M. Friedberg Accessions Fund  
Rosetta Feldman Glashofer Acquisitions  
Endowment  
Lilian Sarah Greif Bequest Fund  
Nelson & Juanita Greif Gutman Fund  
Patricia and Mark Joseph / The Shelter  
Foundation  
Julius Levy Memorial Fund  
Middendorf Foundation Endowment Fund  
Robert O'Donnell Acquisitions Endowment  
in Honor of William Voss Elder, III, Curator  
of Decorative Arts, 1963–1997  
Clair Zamoiski Segal and Thomas H. Segal  
Contemporary Art Acquisition Fund  
Dr. Max Stern Trust Fund

Fanny B. Thalheimer Memorial Fund  
Ellen W. P. Wasserman Acquisitions  
Endowment  
Frederick R. Weisman Contemporary  
Art Fund  
Women's Committee Print Fund  
Ellen and Calman J. Zamoiski, Jr. Fund

## EXPENDABLE PURCHASE FUNDS

---

Arts of Africa, the Americas, Asia & Pacific  
Islands Acquisition Fund  
Art Acquisitions Fund  
Contemporary Art Fund  
Contemporary Print Fair Fund  
Edward Joseph Gallagher III Memorial Fund  
Print and Drawing Fund  
Print & Drawing Society Fund  
The Straton Family Fund

# TRIBUTE GIFTS

---

THE BALTIMORE MUSEUM OF ART IS VERY APPRECIATIVE OF THE MANY PEOPLE WHO HONORED FRIENDS AND FAMILY BY MAKING TRIBUTE GIFTS OF ALL SIZES TO THE MUSEUM. THE BMA GRATEFULLY ACKNOWLEDGES THOSE WHO MADE GIFTS BETWEEN JULY 1, 2017, AND JUNE 30, 2018.

**In Honor of Marjorie Anderson**

Frederica Kolker Saxon

**In Honor of Alexander C. Baer**

Heidi and Brian Berghuis  
Ms. Anne Berman  
Ms. Ann A. Boyce and  
Mr. Robert F. Mansfield  
Suzanne F. Cohen  
Mr. and Mrs. William H. Cowie, Jr.  
Ellen and Linwood Dame, David and  
Hope Rothschild  
Lynn R. Deering  
Fred and Andrea Dunlap  
Ms. Amy Elias and Mr. Richard L. Pearlstone  
Mr. Jay M. Fisher  
Sandra Levi Gerstung  
Judith M. Gibbs  
Mr. and Mrs. Donald E. Gordon  
Margot W. M. Heller  
Jay Jenkins and T.J. Hindman  
Susan B. Katzenberg  
Ms. Louise T. Keelty  
Frederick Singley Koontz  
Mr. Richard Manekin  
Jennifer and Jake Martin  
Jeannie Murphy  
Mr. Terry Parsons and Mr. Richard W. Chase  
Mrs. Helene Penn  
Mr. and Mrs. J. Mark Schapiro  
Clair Zamoiski Segal  
Sherman Family Foundation  
Mr. and Mrs. Arthur Smith  
Dr. and Mrs. William Smulyan  
Mrs. Joan Young

**In Honor of Shelley Cocke**

Mr. Doug Cocke

**In Honor of Eileen W. Cohn**

Clair Zamoiski Segal

**In Honor of Stiles Tuttle Colwill  
& Jonathan Gargiulo**

Suzanne F. Cohen  
Margot W. M. Heller

**In Memory of Gretchen Cummings**

Jim Cummings

**In Memory of Tony Deering**

Alexander C. Baer  
Frederick Singley Koontz  
Mr. Jeffrey A. Legum  
Lora J. and Donald J. Peters  
Clair Zamoiski Segal

**In Memory of Ann Patterson Fair**

Ms. Satonya Fair  
Ms. Paula Young

**In Honor of Jay Fisher**

Mrs. Jerome H. Sherman

**In Honor of Judy Gibbs**

Mr. Jay M. Fisher

**In Honor of Joi Haskins**

Marvin Egorin and Rhonda Overby

**In Honor of David and Janet Hoffberger**

Ms. Courtney Riordon

**In Honor of Ian Holstrom**

Ms. Margaret Kineke

**In Memory of J. Woody Howard**

Ms. Brenda Ehlers

**In Honor of Jeannette C. Kimmel**

Mr. and Mrs. Benjamin Cone, Jr.  
Mrs. Ann Birgel Cunningham  
Dr. and Mrs. Myron Liptzin

**In Honor of Frederick S. Koontz**

Alexander C. Baer

**In Memory of Vivian Lichtenstein**

Dr. and Mrs. Michael Baylin  
Ms. Jane Johnston  
Ms. Ruth Kahn

**In Honor of Jonathan Maltz**

Ms. Deidre Sacks

**In Honor of Harvey M. Meyerhoff**

Mr. and Mrs. A. Stanley Brager, Jr.  
Ms. Eileen W. Cohn

**In Honor of Robert E. Meyerhoff  
& Rheda Becker**

Art Seminar Group

**In Memory of Thomas Milch**

Louise Z. (Weezy) Barber  
Mr. and Mrs. A. Stanley Brager, Jr.  
Dr. Donald and Mrs. Linda Brown  
Dr. and Mrs. Morton Ellin  
Nanette and Irvin Greif, Jr.



Sandra and Thomas Hess

Sally Heyn

Mrs. Linda Himmelrich

Mrs. Samuel S. Kahan

Joan G. and Joseph Klein, Jr.

Mrs. Joyce M. Kronthal

Mr. and Mrs. Harvey M. Meyerhoff

Mr. and Mrs. Erwin M. Sekulow

Mrs. Susan A. Wolman

Mr. and Mrs. Charles Yumkas

**In Memory of Betsy Miller**

Mr. and Ms. Alexander J. Torelli

Ms. Serena Wilson

**In Memory of Sally and Decatur Miller**

Ms. Clemence M. K. Miller and

Mr. Lyle B. Kissack

Mr. and Mrs. I. Manning Parsons III

**In Honor of Karen Nielsen**

Anonymous

Heidi and Brian Berghuis

Ms. Ann A. Boyce and

Mr. Robert F. Mansfield

Suzanne F. Cohen

Dr. Monroe Denton

Nancy L. Dorman and Stanley Mazaroff

Mr. and Mrs. Edward K. Dunn, Jr.

Mr. Jay M. Fisher

Sandra Levi Gerstung

Judith M. Gibbs

Martha and Tad Glenn

Katherine and Joseph Hardiman

Margot W. M. Heller

Ms. Susan B. Katzenberg

Mr. Stephen Mazoh

Mr. James S. Riepe

Frederica Kolker Saxon

Clair Zamoiski Segal

Louis B. Thalheimer and Juliet A. Eurich

Mr. and Mrs. James D. Thornton

David Warnock

**In Memory of Ethel B. Novey**

Mr. and Mrs. Lawrence Novey

Ms. Joelle G. Novey

**In Memory of Rhoda Oakley**

Ms. Nancy Foulk

Mr. Arthur and Ms. Christine Holzinger

Mr. and Mrs. Louis Maccini

Ms. Heide Munro

Mr. Charles and Ms. Karen Pound

**In Memory of Elizabeth Lea Oliver**

Ms. Jane Johnston

**In Honor of Richard Pearlstone**

Alexander C. Baer

**In Memory of Inga Rath**

Mrs. Ann Alcaraz and Mr. Ray Alcaraz

**In Memory of Frances Rome**

Mr. Robert Cohen

Ms. Susan Markowitz

**In Honor of Betty Rosen**

Mr. and Mrs. Harvey M. Meyerhoff

**In Honor of Patty Satsky**

Mr. and Mrs. Stephen G. Weiss

**In Honor of Frederica Kolker Saxon**

Ms. Eileen W. Cohn

Nanette and Irvin Greif, Jr.

Mr. and Mrs. Lewis M. Hess

Ms. Robin Kaplan and Mr. Abram Kronsberg

Mr. and Mrs. Harvey M. Meyerhoff

Clair Zamoiski Segal

Mr. Donald L. Zimmerman

**In Honor of Gail Schulhoff**

Mr. Richard A. Eliasberg

Sandra and Thomas Hess

Mr. and Mrs. Kenneth Hornstein



David and Barbara Kornblatt

Mrs. Sara W. Levi

Mr. and Mrs. William Meyers II

Mr. and Ms. Ivan Stern

Ms. Jean Van Ryzin

**In Honor of Clair Zamoiski Segal**

Ms. Eileen W. Cohn

**In Memory of Thomas H. Segal**

Mr. Will Backstrom and Ms. Tracy Lambros

Alexander C. Baer

Louise Z. (Weezy) Barber

Heidi and Brian Berghuis

Ms. Linda L. Blume

Christine and Frank Bonanno

Ms. Ann A. Boyce and

Mr. Robert F. Mansfield

Mr. and Mrs. Marvin Brave

Frona Brown, Ed.D., and

Beryl J. Rosenstein, M.D.

Ms. Deborah W. Callard

Ms. Diane Cho and Mr. David Benn

Suzanne F. Cohen

Ms. Fronda Cohen-Ottenheimer

Ms. Eileen W. Cohn

Stiles Tuttle Colwill and Jonathan Gargiulo

Mrs. Jane Vallery-Davis and

Mr. Benjamin F. Davis

Mr. and Mrs. John H. Denick

Nancy L. Dorman and Stanley Mazaroff

Mr. and Mrs. Edward K. Dunn, Jr.

Mr. Alan S. Edelman

Ms. Amy Elias and Mr. Richard L. Pearlstone

Mr. Robert Feldman

Ms. Leslye K. Fitterman

Fleckenstein Gallery

Ms. K. Lacy Flynn

Sandra Levi Gerstung

Gertrude's Chesapeake Kitchen

Judith M. Gibbs

Mr. William B. Gilmore

Joanne M. Gold and Andrew A. Stern

Dr. and Mrs. Morton Goldberg

Mrs. Louise G. Goldberg

Ms. Louise K. Goodman

Drs. Geoffrey Greif and  
Maureen Lefton-Greif  
Ms. Nancy Hackerman  
Mr. and Mrs. Richard R. Harwood, III  
Margot W. M. Heller  
Dr. and Mrs. Jesse Hellman  
Ms. Kristen Hileman and  
Mr. Michael Balducci  
Mr. and Mrs. Samuel K. Himmelrich, Sr.  
Paula Hoffberger  
Mr. and Mrs. Richard Hollander  
Mr. Wolf Kahn and Ms. Emily Mason Kahn  
Mimi Kapiloff  
Barbara P. Katz  
Carla and Alex Katzenberg  
Susan B. Katzenberg  
Ms. Julia A. Keller  
Ms. Lori Kilberg  
Frederick Singley Koontz  
Ms. Andrea Krupp  
Mr. Jeffrey A. Legum  
Mr. and Mrs. Robert Levin  
Mr. and Mrs. Edward Lewison  
Ms. Amy Macht and Mr. George Grose  
Carol Macht  
Pam and Allan Malester  
Mr. and Mrs. Arthur Mange  
Dr. Patricia McGrath  
Amy and Marc Meadows  
Phyllis Meyerhoff  
Modell Performing Arts Center  
Ms. Elizabeth K. Moser  
Dr. Kevin Murphy  
Dr. and Mrs. Irwin Nudelman  
Mrs. Helene Penn  
Mr. and Mrs. Arnold I. Richman  
Ms. Nancy Roberts and Mr. David Gillece  
Mr. Michael Ross  
Dr. and Mrs. James Rubenstein  
Frederica Kolker Saxon  
The Honorable and Ms. Allen L. Schwait  
Ms. Leslie Shepard

Dr. Wilma Bulkin Siegel  
Mrs. Jackie and Mr. Manuel Silverman  
Ms. Jennifer Strasbaugh  
Ms. Joan M. Zang

**In Honor of Mary Sharp**

Alice and Morris Garten  
Mr. and Mrs. Herbert S. Garten

**In Memory of Robert Sharp**

Stiles Tuttle Colwill and Jonathan Gargiulo  
Mrs. Anne B. Gray  
Dr. John W. Payne and Jane Champe Payne  
Mrs. Doris Tippens

**In Honor of Denise Tassin**

Mr. and Mrs. Arthur Mange

**In Honor of Calman Zamoiski, Jr.**

Margot W. M. Heller  
Mr. and Mrs. Samuel K. Himmelrich, Sr.  
Ms. Elizabeth K. Moser

**In Honor of Donald Zimmerman**

Mrs. Toni Berger and Dr. Bruce W. Berger



# ART ACCESSIONS

## AFRICAN

### ACCESSIONED BY PURCHASE

#### Purchased as the gift of the Estate of Allen A. Davis

*Four-Legged Vessel*

Lesotho or South Africa, Southern Sotho culture  
Early 19th century  
Wood  
BMA 2017.220

#### Purchased as the gift of Amy Gould and Matthew Polk, Gibson Island, MD

*Knife*

South Africa, Tswana or Southern Sotho culture  
Early 19th century  
Bone, metal  
BMA 2017.221

*Knife Sheath*

South Africa, Tswana or Southern Sotho culture  
Early 19th century  
Bone, metal  
BMA 2017.222

#### Purchased as the gift of the Friends of the Arts of Africa, the Pacific and the Americas

*Grave Witness (Shahidi wa Kaburi)*

Tanzania, Kwere culture  
Early 20th century  
Wood, pigment  
BMA 2018.34

### ACCESSIONED BY GIFT

#### Gift of David and Gayle Ackley, Baltimore, MD

*Prestige Stool*

Democratic Republic of the Congo, Pende culture  
Early to mid-20th century  
Wood  
BMA 2018.35

*Mbuya Mask*

Democratic Republic of the Congo, Pende culture  
Early-mid 20th century  
Wood, fiber, pigment  
BMA 2018.36

*Figure*

Democratic Republic of the Congo, Pende culture  
Early-mid 20th century  
Wood, pigment  
BMA 2018.37

#### Gift of the Estate of Dr. and Mrs. Bernard Berk

*Bracelet*

Ghana, Asante culture  
Early 20th century  
Brass  
BMA 2018.38

*Bracelet*

Ghana, Asante culture  
Mid-20th century  
Brass  
BMA 2018.39

#### Gift of Dori and Daniel Rootenberg, New York, in Honor of Shannen Hill, Associate Curator, Arts of Africa, Asia, the Americas, and the Pacific Islands, 2015–2017

Ntziyanga Qwabe (Zulu, born c. 1900, active South Africa 1920–1940)

*Storage-Rack Panels with Figures and Animals*

Late 1920s–1940s  
Wood with burnt wood  
BMA 2017.223.1–2

## ASIAN ART

### ACCESSIONED BY PURCHASE

#### Given to Honor Sally and Decatur Miller by their Family and Friends

*Covered Wine Jar with Painted Peonies and Inscription*

Cizhou kilns, probably Guantai, Hebei province, China  
12th–13th century  
Stoneware with black painting under green lead glaze  
BMA 2017.141

#### Julius Levy Memorial Fund

*Seated Boy as Kui Xing*

China  
15th–16th century  
Gilt wood  
BMA 2017.224

*Melon-Shaped Bottle*

Korea  
13th century  
Stoneware  
BMA 2017.225

*Jar with Phoenix Design*

Bunwon kiln, Gyeong-gi province, Korea  
Early 19th century  
Porcelain with underglaze cobalt decoration  
BMA 2017.226

#### Straton Family Fund

Eiraku Wazen (Japanese, 1823–1896)  
*Square Dish Decorated with the 'Three Friends of Winter' Motif*

1887  
Stoneware with overglaze enamel and gold decoration  
BMA 2018.40

Kamisaka Sekka (Japanese, 1866–1942)  
*Plum Branch and Full Moon*  
1905–1915  
Ink and color on silk; mounted as a scroll  
BMA 2018.41

### ACCESSIONED BY GIFT

#### Gift in Memory of Mr. and Mrs. Liu Hsien-pu

*Footed Bowl with Painted Floral Design*  
Hengshan kilns, Hunan Province, China  
11th–12th century  
Stoneware with celadon glaze and copper and iron decoration  
BMA 2018.42



*3 Civil Officials, 2 Military Officials, Guardian and Dragon-headed Zodiac Figure*

China  
12th–13th century  
Earthenware  
BMA 2018.43-49

*Group of Four Pieces of Miniature Furniture, Two Animals, and One Covered Jar*

China  
16th–17th century  
Earthenware with green, turquoise, and amber lead glazes  
BMA 2018.50-56

*Pagoda-Form Urn*

Possibly Ningxiang, Hunan province, China  
12th–13th century  
Stoneware with remnants of dark brown glaze  
BMA 2018.57

**Gift of Mark S. Pratt, Washington, D.C.**

*Pedestal Tray with Lid*

Korea  
6th century  
Earthenware  
BMA 2018.58

*Pedestal Jar*

Korea  
6th century  
Earthenware  
BMA 2018.59

*Jar with Stand and Lid*

6th century  
Korea  
Earthenware  
BMA 2018.60

*Brush Washer*

Korea  
12th century  
Stoneware with celadon glaze  
BMA 2018.61

*Cup Stand with Incised Flower Design*

Korea  
12th century  
Stoneware with celadon glaze  
BMA 2018.62

*Foliolate Dish with Molded Decoration*

Korea  
12th century  
Stoneware with celadon glaze  
BMA 2018.63

*Dish with Notched Rim*

Korea  
11th–12th century  
Stoneware with celadon glaze  
BMA 2018.64

*Tea Bowl*

Korea  
11th–12th century  
Stoneware with celadon glaze  
BMA 2018.65

*Bowl*

Korea  
12th century  
Stoneware with celadon glaze  
BMA 2018.66

*Dish with Carved Design*

Korea  
12th–13th century  
Stoneware with celadon glaze  
BMA 2018.67

*Bowl with Inlaid Clouds and Flying Cranes Design*

Korea  
13th–14th century  
Stoneware with celadon glaze and white and black slip decoration  
BMA 2018.68

*Octagonal Dish with Inlaid Chrysanthemum Design*

Korea  
13th–14th century  
Stoneware with celadon glaze and white and black slip decoration  
BMA 2018.69

*Bowl with Inlaid Flower Design*

Korea  
13th–14th century  
Stoneware with celadon glaze and white slip decoration  
BMA 2018.70

*Fifteenth Century Style Bottle with Inlaid Willow and Bamboo Design*

Korea  
Early 20th century  
Stoneware with celadon glaze and black and white slip decoration  
BMA 2018.71

*Buncheong Bowl with Inlaid Dots and Lines Design*

Korea  
15th century  
Stoneware with gray glaze with white slip decoration  
BMA 2018.72

*Bowl*

Korea  
15th–16th century  
Porcelain with transparent glaze  
BMA 2018.73

*Tall Vase with Flower-and-Vine Design*

Korea  
Late 19th century  
Porcelain with underglaze cobalt and copper decoration  
BMA 2018.74

*Bottle*

Korea  
12th–14th century  
Bronze  
BMA 2018.75

**Given in Honor of Margaret Lucille Roulette, San Diego, CA**

Monden Kogyoku (Japanese, born 1916)  
*"Ocean Whirlpool" Basket*  
2001  
Bamboo  
BMA 2017.430

Honma Kazuaki (Japanese, 1930–2017)  
*"Cocoon" Hanging Basket*  
2001  
Bamboo  
BMA 2017.431

Kosuge Kogetsu (Japanese, born 1932)  
*Circular Flower Basket*  
2006  
Bamboo and rattan  
BMA 2017.432

Yamaguchi Ryuun (Japanese, born 1940)  
*"Heat Waves" Basket*  
2000  
Rattan  
BMA 2017.433

Yamaguchi Ryuun (Japanese, born 1940)  
*"Whirlpool" Basket*  
2001  
Rattan  
BMA 2017.434

Yamaguchi Ryuun (Japanese, born 1940)  
*"Sign of Wind" Basket*  
2003  
Bamboo and rattan  
BMA 2017.435

## CONTEMPORARY PAINTING & SCULPTURE

### ACCESSIONED BY PURCHASE

#### **Purchased as the gift of Nancy L. Dorman and Stanley Mazaroff, Baltimore, MD, in Honor of Kristen Hileman**

Njideka Akunyili Crosby (Nigerian, born 1983)

*Dwell: Aso Ebi*

2017  
Acrylic, transfers, colored pencil, collage, and commemorative fabric on paper  
BMA 2018.79

#### **Purchased as the gift of the Joshua Johnson Council, and Anna Elizabeth Fehl Acquisitions Endowment**

John Scott (American, 1940–2007)

*Blues Lace For Sister Sarah*

1991  
Painted steel  
BMA 2018.6

#### **Purchased as the gift of Pamela J. Joyner and Alfred J. Giuffrida**

Mark Bradford (American, born 1961)

*Untitled (Buoy)*

2014  
Mixed media  
BMA 2018.7

#### **Purchase with exchange funds from the Pearlstone Family Fund and partial gift of The Andy Warhol Foundation for the Visual Arts, Inc.**

Amy Sherald (American, born 1973)  
*Planes, rockets, and the spaces in between*  
2018  
Oil on canvas  
BMA 2018.80

Jack Whitten (American, 1939–2018)

*9.11.01*

2006  
Acrylic and mixed media on canvas  
BMA 2018.81

Lynette Yiadom-Boakye (English, born 1977)

*Sam Cadiz*

2017  
Oil on linen  
BMA 2018.82

#### **Purchase with exchange funds from the Pearlstone Family Fund and partial gift of The Andy Warhol Foundation for the Visual Arts, Inc.; and additional funds from Fanny B. Thalheimer Memorial Fund, Katherine M. Hardiman, Frederick R. Weisman Contemporary Acquisitions Endowment, The Rothschild Foundation, and Dr. Max Stern Trust Fund**

Wangechi Mutu (Kenyan-American, born 1972)

*Water Woman*

2017; this cast 2018  
Bronze  
BMA 2017.148

### ACCESSIONED BY GIFT

#### **Anonymous Gift**

Ibrahim Mahama (Ghanaian, born 1987)  
*PRODUCE X*  
2015–2016  
Sleeping mats melted on charcoal sacks  
BMA 2017.149

#### **Gift of a MAD Gathering in Honor of Constance R. Caplan**

Josephine Meckseper (German, born 1964)  
*State of the Union Address to Senate and Nation*  
2005  
Mixed media  
BMA 2017.318

#### **Gift of Jim and Heather Murren, Stephen Cloobek, Golden Boy Enterprises, Danny and Robin Greenspun, and Richard Schaeffer**

Eric Fischl (American, born 1948)  
*Mac*  
1999  
Oil on linen  
BMA 2017.236

#### **Gift of Jean and Sidney Silber, Lutherville, MD**

Ernst Barlach (German, 1870–1938)  
*The Avenger*  
1960s  
Bronze  
BMA 2018.28

Amalie Rothschild (American, 1916–2001)  
*Green Nude*  
1984–1985  
Bronze  
BMA 2018.29

Gerhard Marcks (German, 1889–1981)  
*Dancer*  
Mid-20th century  
Bronze  
BMA 2018.30

Louise Nevelson (American, born Ukraine, 1899–1988)  
*Floating Cloud 10*  
1977  
Painted wood with metal hinges  
BMA 2018.31

### PROMISED GIFT

#### **Promised gift of the Joyner / Giuffrida Collection**

Odili Donald Odita (American, born Nigeria 1966)  
*Adorn*  
2018  
Acrylic latex paint on aluminum-core fabricated wood panel with reconstituted wood veneer  
R.18056

## CONTEMPORARY TIME-BASED MEDIA

### ACCESSIONED BY PURCHASE

#### **Purchase with exchange funds from the Pearlstone Family Fund and partial gift of The Andy Warhol Foundation for the Visual Arts, Inc.**

Isaac Julien (British, born 1960)  
*Baltimore*  
2003  
16mm film transferred to DVD (color, sound)  
BMA 2018.83

Mary Reid Kelley (American, born 1979) and Patrick Kelley (American, born 1969)  
*In The Body of The Sturgeon*  
2017  
Single-channel HD video (black and white, sound)  
BMA 2018.84

#### ACCESSIONED BY GIFT

##### Gift of a MAD Gathering in Honor of Sandra Levi Gerstung

Joachim Koester (Danish, born 1962)  
*Message from Andrée*  
2005  
16mm film (black and white, silent), two color offset lithographs  
BMA 2017.322

##### Gift of a MAD Gathering in Honor of James D. Thornton

Kota Ezawa (German, born 1969)  
*Lennon Sontag Beuys*  
2004  
Single channel video  
BMA 2017.321

#### CONTEMPORARY PRINTS, DRAWINGS, PHOTOGRAPHS

#### ACCESSIONED BY PURCHASE

##### The William G. Baker, Jr. Memorial Fund

Zanele Muholi (South African, born 1972)  
*MalD x, Durban*  
From the series *Somnyama Ngonyama (MalD)*  
2016  
Gelatin silver print  
BMA 2018.3

##### Purchased as the gift of Heidi and Brian Berghuis

Jack Whitten (American, 1939–2018)  
*Form (3rd Set) 2*  
1965  
Oil enamel and acrylic on gessoed paper  
BMA 2018.1

##### Purchased as the gift of Dr. Peyton Eggleston, Baltimore, MD

Enrique Chagoya (American, born Mexico, 1953)  
Printer/Publisher: Universal Limited Art Editions  
*Grande el Sombrero*  
From the series *Recurrent Goya*  
2012  
Etching, aquatint and letterpress printed in black and red  
BMA 2018.86

Enrique Chagoya (American, born Mexico 1953)  
Printer/Publisher: Universal Limited Art Editions  
*Tu que no puedes*  
From the series *Recurrent Goya*  
2012  
Etching, aquatint and letterpress printed in black and red  
BMA 2018.87

##### Julius Levy Memorial Fund

Ken Ohara (Japanese, born 1942)  
Publisher: Tsukiji Shokan Publishing Co.  
*One*  
1970  
Bound volume with offset lithographs  
BMA 2017.145

##### Purchased as the gift of Robert E. Meyerhoff and Rheda Becker

Sara VanDerBeek (American, born 1976)  
*White Nude*  
2013  
Digital chromogenic print  
BMA 2018.4

##### Purchased in Honor of Karen Nielsen, Director of Exhibition Design & Installation, 1981-2017, in recognition of her outstanding service; and The William G. Baker, Jr. Memorial Fund

Zanele Muholi (South African, born 1972)  
*Collen Mfazwe. August House, Johannesburg*  
From the series *Faces and Phases*  
2012  
Gelatin silver print  
BMA 2018.2

##### Purchase with exchange funds from the Pearlstone Family Fund and partial gift of The Andy Warhol Foundation for the Visual Arts, Inc.

Mary Reid Kelley (American, born 1979) and Patrick Kelley (American, born 1969)  
*Gaudy Night*  
2017  
Photographic transparency in lightbox  
BMA 2018.85

##### Gift of Clair Zamoiski Segal, in Memory of her Beloved Husband, Thomas H. Segal

Jack Whitten (American, 1939–2018)  
*Study for Greek Alphabet Series #2*  
1978  
Graphite and colored pencil over white chalk ground with scratching  
BMA 2017.234

##### Women's Committee Acquisitions Endowment for Contemporary Prints and Photographs

Jeff Donaldson (American, 1932–2004)  
*Paternal Homage*  
1974  
Collage with cardboard, foil, paper doilies, opaque and transparent watercolor  
BMA 2017.146

Trevor Paglen (American, born 1974)  
*A Man (Corpus: The Humans)*  
From the series *Adversarially Evolved Hallucination*  
2017  
Dye sublimation metal print  
BMA 2018.5

#### ACCESSIONED BY BEQUEST

##### Bequest of Katharine and Clinton Bamberger, Baltimore, MD

William Kentridge (South African, born 1955)  
Printer/Publisher: Caversham Press  
*Double Shift on Weekends Too*  
Plate I from the series *Industry & Idleness*  
1986–1987  
Liftground aquatint, drypoint, and engraving  
BMA 2017.211

William Kentridge (South African, born 1955)  
Printer/Publisher: Caversham Press  
*Responsible Hedonism*  
Plate II from the series *Industry & Idleness*  
1986–1987  
Aquatint, drypoint, and engraving  
BMA 2017.212



William Kentridge (South African, born 1955)  
Printer/Publisher: Caversham Press  
*Forswearing Bad Company*  
Plate III from the series *Industry & Idleness*  
1986–1987  
Aquatint, engraving, and drypoint  
BMA 2017.213

William Kentridge (South African, born 1955)  
Printer/Publisher: Caversham Press  
*Waiting Out the Recession*  
Plate IV from the series *Industry & Idleness*  
1986–1987  
Aquatint, engraving, and drypoint  
BMA 2017.214

William Kentridge (South African, born 1955)  
Printer/Publisher: Caversham Press  
*Promises of Fortune*  
Plate V from the series *Industry & Idleness*  
1986–1987  
Etching, engraving, aquatint, and drypoint  
BMA 2017.215

William Kentridge (South African, born 1955)  
Printer/Publisher: Caversham Press  
*Buying London with the Trust Money*  
Plate VI from the series *Industry & Idleness*  
1986–1987  
Etching, aquatint, engraving, and drypoint  
BMA 2017.216

William Kentridge (South African, born 1955)  
Printer/Publisher: Caversham Press  
*Lord Mayor of Derby Road*  
Plate VII from the series *Industry & Idleness*  
1986–1987  
Drypoint and engraving  
BMA 2017.217

William Kentridge (South African, born 1955)  
Printer/Publisher: Caversham Press  
*Coda*  
Plate VIII from the series *Industry & Idleness*  
1986–1987  
Aquatint and drypoint  
BMA 2017.218

William Kentridge (South African, born 1955)  
*Arc/Procession*  
1989  
Charcoal and pastel  
BMA 2017.219

### ACCESSIONED BY GIFT

#### Anonymous Gift

David Levinthal (American, born 1949)  
*Untitled*  
Sixteen images from the series *Passion*  
1993, 2005  
Dye diffusion transfer prints  
BMA 2017.237–252

David Levinthal (American, born 1949)  
*Untitled*  
Four images from the series *Wild West*  
1994, 1996, 1998  
Dye diffusion transfer prints  
BMA 2017.253–256

### GIFT OF THE ARTIST

Evan Lindquist (American, born 1936)  
*Onward Upward Excelsior (New Year's Card)*  
2016  
Engraving  
BMA 2017.397

Evan Lindquist (American, born 1936)  
*Push Forward (New Year's Card)*  
2017  
Engraving  
BMA 2017.398

#### Gift of the Artist, Baltimore, MD

Jack Radcliffe (American, born 1940)  
*41 Portraits of Alison*  
1975–1988  
Inkjet Prints  
BMA 2017.275–315

Jack Radcliffe (American, born 1940)  
*Alison and Melissa*  
2012  
Inkjet print  
BMA 2017.316

#### Gift of the Artist, Washington, D.C.

Elizabeth Whiteley (American, born 1945)  
Artist/Author: Peter H. Beaman (American, born 1945)  
Publisher: Peter H. Beaman (American, born 1945)  
Printer: Pyramid Atlantic  
*Deck of Cards*  
1989  
Unbound volume with text and offset lithographs in cardboard box with plastic cover  
BMA 2017.231

#### Gift of the Estate of Dr. and Mrs. Bernard Berk

Pablo Picasso (Spanish, 1881–1973)  
*Harem Scene*  
1968  
Graphite  
BMA 2018.13

Pablo Picasso (Spanish, 1881–1973)  
Publisher: Galerie Louise Leiris  
*Young Man Presenting a Mirror or a Portrait to a Woman*  
From the series “*Suite 347*”  
1968, published 1969  
Etching and drypoint with scraping  
BMA 2018.26

Pablo Picasso (Spanish, 1881–1973)  
Publisher: Galerie Louise Leiris  
*Painter and Model, Rider and “Bonhomme”*  
From the series *Suite 347*  
1968, published 1969  
Aquatint and etching  
BMA 2018.27

Bruce Onobrakpeya (Nigerian, born 1932)  
*Erubvu Uoma*  
1976  
Etching  
BMA 2018.76

#### Gift of Darnell Burfoot, Baltimore, MD

Toshio Sasaki (Japanese, 1946–2007)  
Printer/Publisher: Brandywine Workshop, Philadelphia, Pennsylvania  
*Bronx Project*  
1991  
Color offset lithograph  
BMA 2018.97

#### Gift of the Conner Family Trust, San Francisco, CA

Bruce Conner (American, 1933–2008)  
*#109, #113, #114, #115, #116, #117, #126, #201, #202, #207, #208, #209, #210*  
1970  
Thirteen offset lithographs  
BMA 2018.98.1–13

Bruce Conner (American, 1933–2008)  
*SET OF THREE: 301, 302, 303*  
1970  
Three offset lithographs  
BMA 2018.98.14–16

Artist and Publisher: Bruce Conner  
(American, 1933–2008)  
*BOOK ONE*  
1970  
Portfolio of 15 offset lithographs  
BMA 2018.99.1–15

**Gift of Brenda Edelson, Santa Fe, NM**

Bruce Nauman (American, born 1941)  
Publisher: Multiples, Inc.  
*LA AIR*  
From the boxed series *Artists & Photographs*  
1970  
Bound volume with offset lithographs  
BMA 2017.228

Patrick Caulfield (English, 1936–2005)  
Printer/Publisher: Petersburg Press

*All These Confessions*  
Plate from the book *Some Poems of Jules Laforgue*  
1973  
Color screenprint  
BMA 2017.229

Wang Qingsong (Chinese, born 1966)  
*Thorny Ivy*  
2004, printed 2010  
Chromogenic prints (diptych)  
BMA 2018.92

Noh Suntag (South Korean, born 1971)  
*Red House No. 01-13*  
From the series *Ephemeral*  
2007, printed 2011  
Inkjet print, pigment-based  
BMA 2018.93

Yoshihiro Tatsuki (Japanese, born 1937)  
*Untitled (Girl in a Patterned Kimono Lying Down)*  
c. 1975  
Chromogenic print  
BMA 2018.94

Chuck Ramirez (American, 1962–2010)  
*Piñata: Andrea*  
2002  
Pigment ink print mounted on plexi  
BMA 2018.95

Yun-Fei Ji (Chinese, born 1963)  
Publisher: Library Council of the Museum of Modern Art  
*Three Gorges Dam Migration*  
2009  
Color woodcuts, mounted as a scroll  
BMA 2018.96

**Gift of Brenda Edelson, Santa Fe, NM in Honor of Jay McKean Fisher**

Koichiro Kurita (Japanese, born 1943)  
*In a Meadow, Wales, UK*  
From the series *Terrasphere Hydrosphere Atmosphere (Chi Sui Ki)*  
1990, printed 2000  
Platinum print  
BMA 2017.227

**Gift of Andrew D. Hale, Santa Fe, NM**

Boris Savelev (Russian, born Ukraine, 1947)  
*VI Buffet, Hotin*  
1997  
Kallitype  
BMA 2017.257

Boris Savelev (Russian, born Ukraine, 1947)  
*Door of My Studio, Moscow*  
1999  
Chromogenic print, varnished and mounted to Fabriano paper  
BMA 2017.258

Boris Savelev (Russian, born Ukraine, 1947)  
*Bus, Moscow*  
1980  
Gelatin silver print  
BMA 2017.259

Boris Savelev (Russian, born Ukraine, 1947)  
*Empty Home, Chernowitz*  
1981, printed 1982  
Gelatin silver print  
BMA 2017.260

Boris Savelev (Russian, born Ukraine, 1947)  
*Fence, Moscow*  
1982  
Gelatin silver print  
BMA 2017.261

Boris Savelev (Russian, born Ukraine, 1947)  
*Pipe, St. Petersburg 1982*  
Gelatin silver print  
BMA 2017.262

Boris Savelev (Russian, born Ukraine, 1947)  
*Hands, Moscow*  
1981  
Gelatin silver print  
BMA 2017.263

Boris Savelev (Russian, born Ukraine, 1947)  
*Small Dog*  
1978  
Gelatin silver print  
BMA 2017.264

Boris Savelev (Russian, born Ukraine, 1947)  
*Hat*  
1983  
Gelatin silver print  
BMA 2017.265

Boris Savelev (Russian, born Ukraine, 1947)  
*Cap, Lebedin*  
1984  
Gelatin silver print  
BMA 2017.266

Boris Savelev (Russian, born Ukraine, 1947)  
*Untitled*  
1994  
Gelatin silver print  
BMA 2017.267

Boris Savelev (Russian, born Ukraine, 1947)  
*Rain*  
n.d.  
Gelatin silver print  
BMA 2017.268

Boris Savelev (Russian, born Ukraine, 1947)  
*Crates*  
1987  
Chromogenic print  
BMA 2017.269

Boris Savelev (Russian, born Ukraine, 1947)  
*Mirrors, Southampton*  
2001  
Chromogenic print  
BMA 2017.270

Boris Savelev (Russian, born Ukraine, 1947)  
*Tent, Moscow*  
1997  
Chromogenic print  
BMA 2017.271

Boris Savelev (Russian, born Ukraine, 1947)  
*Stocking, Chernowitz*  
1989  
Chromogenic print  
BMA 2017.272

Boris Savelev (Russian, born Ukraine, 1947)  
*Garage, Moscow*  
1988  
Chromogenic print  
BMA 2017.273

Boris Savelev (Russian, born Ukraine, 1947)  
*Untitled*  
n.d.  
Chromogenic print  
BMA 2017.274

**Gift of Larry Hawk, Silver Spring, MD**

William Christenberry (American, 1936–2016)  
*T.B. Hicks Grocery Store*  
1987  
Colored pencil and graphite  
BMA 2017.232

Elizabeth Murray (American, 1940–2007)  
*Untitled*  
1990  
Blue and black ballpoint pen  
BMA 2017.233

**Gift of Sara W. Levi, Baltimore, MD**

Terry Winters (American, born 1949)  
Publisher: Universal Limited Art Editions  
*Amplitude*  
2000  
Color etching and aquatint  
BMA 2017.142

**Gift of Dr. and Mrs. Jack Lissauer in Memory of Rosetta and Leslie Lissauer**

Gabor Peterdi (American, born Hungary, 1915–2001)  
*Gabor Peterdi: Graphics 1934–1969*  
1969–1970  
Bound catalogue with six relief etchings  
BMA 2017.202

**Gift of Dr. and Mrs. Jack Lissauer, in Memory of Marvene Morner Roos**

Gendron Lloyd Jensen (American, born 1939)  
Printer/Publisher: Tamarind Institute  
Printer: Bill Lagattuta (American, born 1951)  
*Assateague*  
2010  
Crayon lithograph  
BMA 2017.147

**Gift of a MAD Gathering**

Ari Marcopolous (Dutch, born 1957)  
Publisher: Will Rogan (American, born 1975)  
Publisher: John Herschend (American, born 1967)  
*Limited Edition Box: Forever*  
2008  
Newspaper and digital print  
BMA 2017.317

Josephine Meckseper (German, born 1964)  
*Untitled (%) Shelf*  
2007  
Digital chromogenic print  
BMA 2017.319

Josephine Meckseper (German, born 1964)  
*Untitled (March on Washington 9/24/05, Coffins, Xray)*  
2005, printed 2007  
Digital chromogenic print  
BMA 2017.320

Tim Belonax (American, born 1981)  
Publisher: Will Rogan (American, born 1975)  
Publisher: John Herschend (American, born 1967)  
*SASE #3*  
2012  
Cardboard template  
BMA 2017.323

Omer Fast (Israeli, born 1972)  
Printer: Atelier Bordas  
Co-Publisher: Postmasters Gallery  
Co-Publisher: gb agency  
*Godville Portraits*  
2005  
Portfolio of twelve pigment-based inkjet prints  
BMA 2017.324.1-12

James Franco (American, born 1978)  
Publisher: Will Rogan (American, born 1975)  
Publisher: John Herschend (American, born 1967)  
*Limited Edition Switchblade: Brad Renfro Forever*  
2012  
Switchblade, box, instruction manual  
BMA 2017.325

Suzanne Husky (French, born 1975, active in United States)  
Publisher: Will Rogan (American, born 1975)  
Publisher: John Herschend (American, born 1967)  
*SASE #1*  
2010  
Digital print  
BMA 2017.326

Tucker Nichols (American, born 1970)  
Publisher: Will Rogan (American, born 1975)  
Publisher: John Herschend (American, born 1967)  
*Free Map*  
2008  
Color offset lithograph  
BMA 2017.327

Hank Willis Thomas (American, born 1976)  
Printer/Publisher: Lower East Side Printshop, New York  
Printer: Erik Hougen (American, born 1982)  
Printer: Keigo Takahashi (Japanese, born 1976)  
*And I Can't Run*  
2013  
Screenprint on retroreflective vinyl mounted on aluminum  
BMA 2017.328

Miranda July (American, born 1974)  
Publisher: Will Rogan (American, born 1975)  
Publisher: John Herschend (American, born 1967)  
*Issue 1*  
From the periodical "The Thing"  
2007  
Screenprint on vinyl window shade  
BMA 2017.329

Anne Walsh (American, born 1962)  
Publisher: Will Rogan (American, born 1975)  
Publisher: John Herschend (American, born 1967)  
*Issue 2*  
From the periodical "The Thing"  
2007  
Rubber wedge  
BMA 2017.330



Kota Ezawa (German, born 1969)  
Publisher: Will Rogan (American, born 1975)  
Publisher: John Herschend (American, born 1967)  
*Issue 3*  
From the periodical "The Thing"  
2008  
Baseball cap, letter  
BMA 2017.331

Tucker Nichols (American, born 1970)  
Publisher: Will Rogan (American, born 1975)  
Publisher: John Herschend (American, born 1967)  
*Issue 3.5*  
From the periodical "The Thing"  
2008  
Four cardboard beer mats, rubber band  
BMA 2017.332

Trisha Donnelly (American, born 1974)  
Publisher: Will Rogan (American, born 1975)  
Publisher: John Herschend (American, born 1967)  
*Issue 4*  
From the periodical "The Thing"  
2008  
Vinyl, printed sleeve  
BMA 2017.333

Lucy Pullen (Canadian, born 1971)  
Publisher: Will Rogan (American, born 1975)  
Publisher: John Herschend (American, born 1967)  
*Issue 5*  
From the periodical "The Thing"  
2008  
Bisected Canadian white ash  
BMA 2017.334

Allora & Calzadilla (Jennifer Allora, American, born 1974; Guillermo Calzadilla, Cuban, born 1971)  
Publisher: Will Rogan (American, born 1975)  
Publisher: John Herschend (American, born 1967)  
*Issue 6*  
From the periodical "The Thing"  
2008  
Bound volume ("*Problems and Promises*"), tennis shoe, shoelace  
BMA 2017.335

Jonathan Lethem (American, born 1964)  
Publisher: Will Rogan (American, born 1975)  
Publisher: John Herschend (American, born 1967)  
*Issue 7*  
From the periodical "The Thing"  
2008  
Pair of eyeglasses with text, glasses case, manual  
BMA 2017.336

Trevor Paglen (American, born 1974)  
Publisher: Will Rogan (American, born 1975)  
Publisher: John Herschend (American, born 1967)  
*Issue 8*  
From the periodical "The Thing"  
2009  
Ceramic mug  
BMA 2017.337

Ryan Gander (British, born 1976)  
Publisher: Will Rogan (American, born 1975)  
Publisher: John Herschend (American, born 1967)  
Design Group: Europa (founded 2009)  
*Issue 9*  
From the periodical "The Thing"  
2009  
Deck of parallel playing cards, game instructions  
BMA 2017.338

Starlee Kine (American, born 1975)  
Publisher: Will Rogan (American, born 1975)  
Publisher: John Herschend (American, born 1967)  
*Issue 10*  
From the periodical "The Thing"  
2010  
Bamboo cutting board; offset lithograph in black and light blue  
BMA 2017.339

Chris Johanson (American, born 1968)  
Publisher: Will Rogan (American, born 1975)  
Publisher: John Herschend (American, born 1967)  
*Issue 11*  
From the periodical "The Thing"  
2010  
Two ceramic cups, offset lithograph  
BMA 2017.340

DOO.RI (American, founded 1973)  
Publisher: Will Rogan (American, born 1975)  
Publisher: John Herschend (American, born 1967)  
*Issue 12*  
From the periodical "The Thing"  
2010  
Short-sleeved shirt with tag; two push pins  
BMA 2017.341

Matthew Higgs (English, born 1964)  
Martin Creed (English, born 1968)  
Publisher: Will Rogan (American, born 1975)  
Publisher: John Herschend (American, born 1967)  
*Issue 13*  
From the periodical "The Thing"  
2010  
Vinyl record  
BMA 2017.342

James Franco (American, born 1978)  
Publisher: Will Rogan (American, born 1975)  
Publisher: John Herschend (American, born 1967)  
*Issue 14*  
From the periodical "The Thing"  
2011  
Mirror, lipstick and color photograph with poster  
BMA 2017.343

MacFadden & Thorpe (Brett MacFadden, American, born 1970; Scott Thorpe, American, born 1972)  
Publisher: Will Rogan (American, born 1975)  
Publisher: John Herschend (American, born 1967)  
*Issue 15*  
From the periodical "The Thing"  
2011  
Fabric, grommets  
BMA 2017.344

Dave Eggers (American, born 1970)  
Publisher: Will Rogan (American, born 1975)  
Publisher: John Herschend (American, born 1967)  
*Issue 16*  
From the periodical "The Thing"  
2011–2012  
Printed shower curtain  
BMA 2017.345

Shannon Ebner (American, born 1971)  
Publisher: Will Rogan (American, born 1975)  
Publisher: John Herschend (American, born 1967)  
*Issue 17*  
From the periodical "The Thing"  
2012  
Glass bottle of maple syrup, offset lithograph  
BMA 2017.346

Mike Mills (American, born 1966)  
Publisher: Will Rogan (American, born 1975)  
Publisher: John Herschend (American, born 1967)  
*Issue 18: The Fabric of Events*  
From the periodical "The Thing"  
2012  
Bound volume  
BMA 2017.347

David Shrigley (English, born 1968)  
Publisher: Will Rogan (American, born 1975)  
Publisher: John Herschend (American, born 1967)  
*Issue 19: The Travel Issue*  
From the periodical "The Thing"  
2013  
Travel wallet, passport, phrase cards  
BMA 2017.348

Tauba Auerbach (American, born 1981)  
Publisher: Will Rogan (American, born 1975)  
Publisher: John Herschend (American, born 1967)  
*Issue 20*  
From the periodical "The Thing"  
2013  
Wall clock  
BMA 2017.349

Ben Marcus (American, born 1967)  
Publisher: Will Rogan (American, born 1975)  
Publisher: John Herschend (American, born 1967)  
*Issue 21*  
From the periodical "The Thing"  
2013  
Tin of Thompson cream, booklet  
BMA 2017.350

John Baldessari (American, born 1931)  
Publisher: Will Rogan (American, born 1975)  
Publisher: John Herschend (American, born 1967)  
*Issue 22*  
From the periodical "The Thing"  
2014  
Screenprint on cotton  
BMA 2017.351

David Korty (American, born 1971)  
Publisher: Will Rogan (American, born 1975)  
Publisher: John Herschend (American, born 1967)  
*Issue 23*  
From the periodical "The Thing"  
2014  
Six ceramic dice, bag, game instructions  
BMA 2017.352

Rodarte (American, founded 2005)  
Publisher: Will Rogan (American, born 1975)  
Publisher: John Herschend (American, born 1967)  
*Issue 24*  
From the periodical "The Thing"  
2014  
Vinyl record  
BMA 2017.353

Brian Roettinger (American, born 1977)  
Publisher: Will Rogan (American, born 1975)  
Publisher: John Herschend (American, born 1967)  
*Issue 25*  
From the periodical "The Thing"  
2014  
Bound volume  
BMA 2017.354

Various Artists  
*2008 A.R.T. Benefit Portfolio*  
2008  
Portfolio of six chromogenic prints  
Image (each): 203 × 254 mm. (8 × 10 in.)  
BMA 2017.355.1–6

#### **Gift of Richard and Ronay Menschel**

Harry Callahan (American, 1912–1999)  
*Providence*  
1970s  
Gelatin silver print  
BMA 2017.390

Harry Callahan (American, 1912–1999)  
*Cuzco, Peru*  
1974  
Gelatin silver print  
BMA 2017.391

Harry Callahan (American, 1912–1999)  
*Cuzco, Peru*  
1974  
Gelatin silver print  
BMA 2017.392

Aaron Siskind (American, 1903–1991)  
*Rome: Back of Constantine 5*  
1967  
Gelatin silver print  
BMA 2017.394

Aaron Siskind (American, 1903–1991)  
*Rome 69*  
1973  
Gelatin silver print  
BMA 2017.395

Aaron Siskind (American, 1903–1991)  
*Jalapa 35*  
1973  
Gelatin silver print  
BMA 2017.396

#### **Gift of the Children of John H. and Betsy Miller**

Joan Miró (Spanish, 1893–1983)  
*The Angry One*  
1967  
Color etching, aquatint and carborundum  
BMA 2018.18

#### **Gift of Jim and Heather Murren, Stephen Clooback, Golden Boy Enterprises, Danny and Robin Greenspun, and Richard Schaeffer**

Richard Diebenkorn (American, 1922–1993)  
*Untitled*  
c. 1964  
Brush and blue and black washes, blue ballpoint pen, blue porous-point pen, and charcoal  
BMA 2017.235

#### **Given in Memory of Kenji Nakahashi**

Kenji Nakahashi (Japanese, 1947–2017)  
*Accident*  
1980, printed 1989  
Chromogenic print  
BMA 2018.88

Kenji Nakahashi (Japanese, 1947–2017)  
*Untitled (Citibank)*  
1990, printed 1998  
Gelatin silver print  
BMA 2018.89

Kenji Nakahashi (Japanese, 1947–2017)  
*Clowns*  
From the series *3N*  
n.d.  
Chromogenic print  
BMA 2018.90

Kenji Nakahashi (Japanese, 1947–2017)  
*Niagara Falls*  
From the series *3N*  
1990, printed 1998  
Chromogenic print  
BMA 2018.91

**Gift of Gail Ostergaard, Baltimore, MD**

Mel Bochner (American, born 1940)  
Author: Ludwig Wittgenstein (Austrian, 1889–1951)  
Printer/Publisher: Arion Press  
*On Certainty*  
1991  
Bound volume with letterpress text and color relief prints and slipcase  
BMA 2017.230

**PROMISED GIFT**

**Promised gift of Suzanne F. Cohen, Baltimore, MD**

Adam Pendleton (American, born 1984)  
*what is...(study)*  
2017  
Silkscreen ink on Mylar  
R.18187

**DECORATIVE ARTS**

**ACCESSIONED BY BEQUEST**

**Bequest of Carolyn S. Obrecht, Baltimore, MD**

*Cake Basket*  
1821–1822  
London, England  
Maker: Paul Storr (English, 1771–1844)  
Silver  
BMA 2018.32

**ACCESSIONED BY GIFT**

**Gift of Lois Borgenicht, Berta Borgenicht Kerr, and Jan Borgenicht Schwartz**

*Necklace*  
20th century  
New York, United States  
Ibram Lassaw (American, born Egypt, 1913–2003)  
Metal alloy  
BMA 2017.399

**Gift of Linda and G. Arnold Kaufman, Baltimore, MD**

*Untitled*  
1987  
Spruce Pine, North Carolina, United States  
Gary Beecham (American, born 1955)  
Blown glass  
BMA 2017.152

*In Reach*

1998  
Washington, United States  
Martin Blank (American, born 1962)  
Hot-worked glass  
BMA 2017.153

*Miniature Room: Playing Hard*

1992  
United States  
Emily Brock (American, born 1945)  
Glass  
BMA 2017.154

*Perfume Construction*

1996  
Champaign, Illinois, United States  
William Carlson (American, born 1950)  
Glass, granite  
BMA 2017.155

*Honest Pride*

1988  
New York, New York, United States  
Sydney Cash (American, born 1941)  
Glass  
BMA 2017.156

*Vessel: Classista*

2007  
Venice, Italy  
Afro Celotto (Italian, born 1963)  
Glass  
BMA 2017.157

*Blanket Cylinder*

1984  
Seattle, Washington, United States  
Dale Chihuly (American, born 1941)  
Blown and assembled thread glass, colored lip wrap  
BMA 2017.158

*Violet Macchia*

1987  
Seattle, Washington, United States  
Dale Chihuly (American, born 1941)  
Glass  
BMA 2017.159

*Bubbles*

1999  
Massachusetts, United States  
Carol Cohen (American, born 1939)  
Glass and mixed-media  
BMA 2017.160

*Untitled*

1987  
United States  
Robert Dane (American, born 1953)  
Glass  
BMA 2017.161

*Untitled*

c. 1994  
Massachusetts, United States  
Robert Dane (American, born 1953)  
Glass and wood  
BMA 2017.162

*Village of Fallen Flowers*

1988  
Tokyo, Japan  
Kyohei Fujita (Japanese, 1921–2004)  
Mold blown glass with applied gold and platinum leaf; silver lip wraps  
BMA 2017.163

*Harvest III*

2000  
United States  
David Gignac (American, born 1967)  
Glass, painted metal alloy  
BMA 2017.164

*Fata Morgana*

1990  
Prague, Czech Republic  
Pavel Hlava (Czech, 1924–2003)  
Cold worked glass; ground, polished, and laminated  
BMA 2017.165

*Detonation*

1989  
United States  
David Huchthausen (American, born 1951)  
Glass  
BMA 2017.166

*Four Eyes*

1991  
Winston-Salem, North Carolina, United States  
Jon Kuhn (American, born 1949)  
Glass  
BMA 2017.167



*Child's Dress*  
2003  
United States  
Karen LaMonte (American, born 1967)  
Glass  
BMA 2017.168

*Square Bottles*  
1999  
United States  
Judith La Scola (American, born 1955)  
Glass  
BMA 2017.169

*Mobile Stable Flash Sectional*  
1981  
Spruce Pine, North Carolina, United States  
Harvey Littleton (American, 1922–2013)  
Glass  
BMA 2017.170

*Stagesetter*  
1987  
Rochester, New York, United States  
Concetta Mason (American, born 1956)  
Glass  
BMA 2017.171

*Contiguous Fragment Series*  
1989  
United States  
Joel Philip Myers (American, born 1934)  
Glass  
BMA 2017.172

*Scent Bottle*  
2006  
United States  
Nick Mount (Australian, born 1952)  
Glass  
BMA 2017.173

*Breakpoint 2*  
2010  
United States  
Kathleen Mulcahy (American, born 1950)  
Glass and steel  
BMA 2017.174

*Compacted Black with Red and Blue*  
1999  
Pittsfield, Massachusetts, United States  
Tom Patti (American, born 1943)  
Glass  
BMA 2017.175

*Kunsterstruction Series*  
1987  
United States  
Michael Pavlik (Czech, born 1941)  
Glass  
BMA 2017.176

*Dusk Descending*  
1990  
United States  
Mark Peiser (American, born 1938)  
Glass  
BMA 2017.177

*Upside Down*  
2001  
United States  
Flo Perkins (American, born 1951)  
Glass, steel, bronze  
BMA 2017.178

*Triolet Series #69*  
1991  
United States  
Richard Ritter (American, born 1940)  
Glass  
BMA 2017.179

*Heart(h)stone*  
1996  
North Carolina, United States  
Sally Rogers (American, born 1960)  
Glass, steel, stone  
BMA 2017.180

*Chandelier #9920c*  
1999  
Sweden  
Jonas Rooth (Swedish, born 1961)  
Glass  
BMA 2017.181

*Untitled (Blue/Red Foldover)*  
1984  
Illinois, United States  
Ira Sapir (American, born 1955)  
Glass  
BMA 2017.182

*Cleo Walker*  
1991  
United States  
Jack A. Schmidt (American, born 1945)  
Glass, steel  
BMA 2017.183

*Vestal 111*  
1991  
United States  
Mary Shaffer (American, born 1947)  
Glass  
BMA 2017.184

*Daisy Perfume*  
1990  
United States  
Yaffa Sikorsky-Todd (Israeli, born 1951)  
Glass  
BMA 2017.185

*Cloistered Spring Beauty with Spirits Botanical*  
1991  
United States  
Paul Stankard (American, born 1943)  
Glass  
BMA 2017.186

*Cast Crystal 781105*  
1987  
United States  
Steven I. Weinberg (American, born 1954)  
Glass  
BMA 2017.187

*Giraffes*  
1994  
Portland, Oregon, United States  
Martha Wolf (American, born 1958)  
Glass  
BMA 2017.188

**Gift of Michael and Anis Merson, Baltimore, MD**

*Arts and Craft Vine Pattern Salad Serving Set*  
1880–1920  
New York, New York, United States  
Manufacturer: Tiffany & Company (1837–present)  
Sterling silver  
BMA 2017.400

*Cypress Pattern Salad Serving Set*  
Design issued 1954  
Copenhagen, Denmark  
Georg Jensen Silversmithy (Founded 1904)  
Silver  
BMA 2017.401

*Salad Serving Set*

c. 1960  
Mexico City, Mexico  
Manufacturer: Celsa  
Silver, ebony or resin  
BMA 2017.402

*Art Deco Machine Age Magazine Rack*

c. 1933  
Pittsburgh, Pennsylvania, United States  
Manufacturer: McKay Company  
Painted metal and chrome  
BMA 2017.403

**Gift of the David Teiger Trust**

*Lounge Chair Model No. 1*  
1931–1932  
Finland  
Laminated beech and plywood, black paint  
BMA 2017.404

*Chair and Stool*

1938  
Italy  
Painted wood  
BMA 2017.405

*Stool*

1959  
France  
Le Corbusier (Charles Edouard Jeanneret)  
(French, born Switzerland, 1887–1965)  
Wood  
BMA 2017.406

**Gift of Andrew Van Styn, Baltimore, MD  
in Memory of Gene Watson**

*Waring Blendor, Model B*  
1937  
New York, New York, United States  
Manufacturer: Waring Mixer Corp.  
Chrome-plated metal, plastic, rubber  
BMA 2017.407

**PRE-1960 AMERICAN  
PAINTING & SCULPTURE**

**ACCESSIONED BY GIFT**

**Gift of the Estate of Sylvia Sleigh**

Sylvia Sleigh (American, born Wales,  
1916–2010)  
*Nude of Lawrence*  
1949  
Oil on canvas  
BMA 2017.150

Sylvia Sleigh (American, born Wales,  
1916–2010)

*Michael Greenwood at Pett Rectory*  
1950  
Oil on canvas  
BMA 2017.151

**Gift of Carol Weis and Suzanne Applefeld,  
Baltimore, MD, in Memory of their Mother,  
Helene Greif Beckley**

Max Weber (American, born Russia,  
1881–1961)  
*Still Life*  
1909  
Oil on canvas  
BMA 2017.209

**Gift of Jonathan Spingarn, Atlanta, GA**

Max Weber (American, born Russia,  
1881–1961)  
*Mother and Child*  
1915  
Plaster  
BMA 2017.210

**PRE-1960 EUROPEAN  
PAINTING & SCULPTURE**

**PROMISED GIFT**

**Private Collection, Baltimore, MD:  
Promised gift to The Baltimore  
Museum of Art**

Charles-François Daubigny (French,  
1817–1878)  
*Barbizon Landscape Scene*  
c. 1875  
Oil on canvas

**PRE-1960 GRAPHIC ARTS**

**ACCESSIONED BY PURCHASE**

**Blanche Adler Memorial Fund**

Artist and Publisher: Gabriel Huquier  
(French, 1695–1772)  
A. Bouchet (French, active c.1730–1740)  
After François Boucher (French, 1703–1770)  
*Book of Vases*  
c. 1734–1738  
Bound set of 15 etchings (including title  
plate), three printed in red  
BMA 2017.189

Adriaen van Ostade (Dutch, 1610–1685)  
*The Singers*  
c.1667  
Etching  
BMA 2017.190

**The John Dorsey and Robert W. Armacost  
Acquisitions Endowment**

Louis Marcoussis (French, born Poland,  
1883–1941)  
Publisher: Camille Bloch  
*Guillaume Apollinaire*  
1912–1920  
Etching, aquatint, and drypoint  
BMA 2017.191

Étienne-Jules Marey (French, 1830–1904)

*Flying Gull*  
c. 1887  
Albumen print  
BMA 2018.8

Thomas Frye (Irish, 1710–1762)  
*Young Woman in Profile to the Left*  
From the series *Ladies, Very Elegantly  
Attired in the Fashion, and in the Most  
Agreeable Attitudes*  
1761  
Mezzotint  
BMA 2018.9

Felice Giani (Italian, 1758–1823)  
*Personification of Architecture with  
the Genius of the Fine Arts*  
1797  
Etching and aquatint printed in brown  
BMA 2018.10

Karl Schmidt-Rottluff (German, 1884–1976)  
*Forest and Sun*  
1920  
Drypoint  
BMA 2018.11

## ACCESSIONED BY GIFT

### Gift of The Dorothy Dehner Foundation for the Visual Arts

Dorothy Dehner (American, 1901–1994)  
*Embry 1*  
1952  
Etching and aquatint  
BMA 2017.199

Dorothy Dehner (American, 1901–1994)  
*Grid Lock*  
1952  
Etching and aquatint, printed in black and red  
BMA 2017.200

Dorothy Dehner (American, 1901–1994)  
*Jane's Poem*  
1953  
Etching  
BMA 2017.201

### Gift of Karen Drewes Seibert representing the Drewes Estate, Chevy Chase, MD

Werner Drewes (American, born Germany, 1899–1985)  
*On Different Planes*  
1944  
Engraving  
BMA 2017.206

Werner Drewes (American, born Germany, 1899–1985)  
*Praying Mantis*  
1944  
Engraving  
BMA 2017.207

Werner Drewes (American, born Germany, 1899–1985)  
*Apocalyptic Beasts*  
1945  
Engraving and softground etching  
BMA 2017.208

### Gift of Norma and Myron H. Goldberg, Baltimore, MD

Stuart Davis (American, 1892–1964)  
*The Doctor's (Bowery New York)*  
1910  
Watercolor over graphite  
BMA 2017.193

Maurice Brazil Prendergast (American, 1858–1924)  
*Blue Sea Study*  
c. 1910–1917  
Watercolor over graphite  
BMA 2017.194

### Collection of LeRoy E. Hoffberger and Paula Gately Tillman Hoffberger

Ferdinand Hodler (Swiss, 1853–1918)  
Printer: Graphische Anstalt J.E. Wolfensberger AG  
*Poster for Ferdinand Hodler Exhibition at the Kunsthaus in Zürich*  
1917  
Color lithograph  
BMA 2018.24

Ernst Ludwig Kirchner (German, 1880–1938)  
*Poster for the Albert Müller Memorial Exhibition at the Kunsthalle in Basel*  
1927  
Color lithograph  
BMA 2018.25

### Gift of William R. and Sona K. Johnston, Baltimore, MD

Aubrey Beardsley (English, 1872–1898)  
Publisher: T. Fisher Unwin, London (founded 1882)  
*The Pseudonym and Autonym Libraries*  
1894  
Color lithograph  
BMA 2018.14

Eugène Samuel Grasset (French, 1841–1917)  
Publisher: Affiches Artistique de La Plume, Paris  
Printer: G. De Malherbe  
*Exhibition Poster for "Salon des Cent"*  
1894  
Color lithograph and letterpress  
BMA 2018.15

Louis Rhead (American, born England, 1857–1926)  
*Peacocks*  
1896  
Color lithograph  
BMA 2018.16

Augustin Théodule Ribot (French, 1823–1891)  
*Still Life*  
1878  
Etching and aquatint  
BMA 2018.17

*Stencil with Wave Pattern*  
Late 19th–early 20th century  
Japan  
Mulberry paper  
BMA 2018.77

*Stencil with Scattered Flowers Pattern*  
Early 20th century  
Japan  
Mulberry paper  
BMA 2018.78

### Gift of a MAD Gathering

Manuel Manilla (Mexican, 1830–1895)  
Printer/Publisher: Arsacio Vanegas Arroyo (Mexican, active 1970s)  
*330 Original Engravings*  
Published 1971  
Portfolio with 330 engravings printed in relief on 92 sheets of colored paper, including title, colophon, two dedications (one in English), plus slip cover  
BMA 2017.36

José Clemente Orozco (Mexican, 1883–1949)  
Publisher: Delphic Arts  
*Women*  
1935  
Crayon lithograph  
BMA 2017.357

José Guadalupe Posada (Mexican, 1851–1913)  
*The Famous Battle Horse of Emiliano Zapata*  
c. 1911  
Metal relief print  
BMA 2017.358

José Guadalupe Posada (Mexican, 1851–1913)  
*Ballad of the Life of Santanón*  
1911  
Metal relief print  
BMA 2017.359

José Guadalupe Posada (Mexican, 1851–1913)  
*The Crimes of the Carrancistas*  
1913  
Metal relief print  
BMA 2017.360



José Guadalupe Posada (Mexican, 1851–1913)  
Publisher: Antonio Vanegas Arroyo (Mexican, 1850–1917)  
*The Execution of Arnulfo Villegas*  
c. 1908  
Metal relief print  
BMA 2017.361

José Guadalupe Posada (Mexican, 1851–1913)  
Publisher: Antonio Vanegas Arroyo (Mexican, 1850–1917)  
*The Terrible Wreck of the Hidalgo Railroad at the Tapa Station*  
1902  
Metal relief print  
BMA 2017.362

José Guadalupe Posada (Mexican, 1851–1913)  
*The Flood of Guanajuato and its True Causes*  
1905  
Metal relief print  
BMA 2017.363

José Guadalupe Posada (Mexican, 1851–1913)  
*Horrible Crime! A Woman Kills her Son in Tacubaya, Saturday, March 18, 1905*  
1905  
Metal relief print  
BMA 2017.364

José Guadalupe Posada (Mexican, 1851–1913)  
*The Effects of the Spirit*  
c. 1894–1913  
Metal relief print  
BMA 2017.365

José Guadalupe Posada (Mexican, 1851–1913)  
*Frightening Event, A Dead Woman Rises from the Grave.*  
c. 1894–1913  
Metal relief print  
BMA 2017.366

José Guadalupe Posada (Mexican, 1851–1913)  
*The Execution of the Soldier Bruno Apresa*  
c. 1904  
Metal relief print  
BMA 2017.367

José Guadalupe Posada (Mexican, 1851–1913)  
*The Execution of Jesus Negrete*  
c. 1894–1913  
Metal relief print  
BMA 2017.368

José Guadalupe Posada (Mexican, 1851–1913)  
*The Execution of Ignacio Aguilar Zamudio*  
c. 1894–1913  
Metal relief print  
BMA 2017.369

José Guadalupe Posada (Mexican, 1851–1913)  
*The Execution of Jose Prado*  
c. 1894–1913  
Metal relief print  
BMA 2017.370

José Guadalupe Posada (Mexican, 1851–1913)  
*Warfare in Juarez*  
c. 1894–1913  
Metal relief print  
BMA 2017.371

José Guadalupe Posada (Mexican, 1851–1913)  
*The Bloody Event in Puebla*  
c. 1894–1913  
Metal relief print  
BMA 2017.372

José Guadalupe Posada (Mexican, 1851–1913)  
Publisher: Antonio Vanegas Arroyo (Mexican, 1850–1917)  
*Great Electrica Calavera*  
1907  
Metal relief print  
BMA 2017.373

José Guadalupe Posada (Mexican, 1851–1913)  
*The Calavera of Vicious Gossip*  
c. 1894–1913  
Metal relief print  
BMA 2017.374

José Guadalupe Posada (Mexican, 1851–1913)  
*Calavera of Don Juan Tenorio*  
c. 1894–1913  
Metal relief print  
BMA 2017.375

José Guadalupe Posada (Mexican, 1851–1913)  
*The Thundering Calavera of the Modern Bells*  
c. 1894–1913  
Metal relief print  
BMA 2017.376

José Guadalupe Posada (Mexican, 1851–1913)  
*I Am Don Juan Tenorio, and I Will Make Dishes of Your Skulls*  
c. 1894–1913  
Metal relief print  
BMA 2017.377

José Guadalupe Posada (Mexican, 1851–1913)  
*Guadalupe Bejarano in the Prison of Belen*  
c. 1894–1913  
Metal relief print  
BMA 2017.378

José Guadalupe Posada (Mexican, 1851–1913)  
*The Calavera Taurina*  
c. 1894–1913  
Metal relief print  
BMA 2017.379

José Guadalupe Posada (Mexican, 1851–1913)  
*Commotion of Calaveras*  
c. 1894–1913  
Metal relief print  
BMA 2017.380

José Guadalupe Posada (Mexican, 1851–1913)  
Publisher: Antonio Vanegas Arroyo (Mexican, 1850–1917)  
*Lonely Soul*  
c. 1900–1910  
Metal relief print  
BMA 2017.381

José Guadalupe Posada (Mexican, 1851–1913)  
Publisher: Antonio Vanegas Arroyo (Mexican, 1850–1917)  
*Skeletons as Artisans*  
c. 1910  
Metal relief print  
BMA 2017.382

David Alfaro Siqueiros (Mexican, 1896–1974)  
*Black Woman (Profiles)*  
c. 1956  
Phototransfer lithograph  
BMA 2017.383

David Alfaro Siqueiros (Mexican, 1896–1974)  
*The Child Mother*  
1956  
Phototransfer lithograph  
BMA 2017.384

**Gift of Anthony and Esther Marsiglia, Baltimore, MD**

Various Artists  
*L'Assiette au Beurre*  
1904  
Bound volume of letterpress text and photomechanical metal relief prints  
BMA 2017.192

**Gift of Richard and Ronay Menschel**

Harry Callahan (American, 1912–1999)  
*Detroit*  
1941, printed later  
Gelatin silver print  
BMA 2017.385

Harry Callahan (American, 1912–1999)  
*Detroit*  
1942, printed later  
Gelatin silver print  
BMA 2017.386

Harry Callahan (American, 1912–1999)  
*Detroit*  
1943, printed later  
Gelatin silver print  
BMA 2017.387

Harry Callahan (American, 1912–1999)  
*Eleanor, New York*  
1945, printed later  
Gelatin silver print  
BMA 2017.388

Harry Callahan (American, 1912–1999)  
*Providence*  
c. 1963  
Gelatin silver print  
BMA 2017.389

Aaron Siskind (American, 1903–1991)  
*Martha's Vineyard (Hand with Minnow)*  
1939  
Gelatin silver print  
BMA 2017.393

**Gift of Mr. and Mrs. Raoul Middleman, Baltimore, MD**

Stanley William Hayter (English, 1901–1988)  
Publisher: Marian Willard Gallery  
*Laocoön*  
1943  
Engraving, softground etching, and scorper  
BMA 2017.203

**Gift of the Children of John H. and Betsy Miller**

Pablo Picasso (Spanish, 1881–1973)  
*Bust in Profile (Portrait of Jacqueline)*  
1957  
Tusche lithograph with scraping  
BMA 2018.19

Pablo Picasso (Spanish, 1881–1973)  
Publisher: Galerie Louise Leiris  
*Picador and Bull*  
1959  
Color linoleum cut  
BMA 2018.20

Georges Rouault (French, 1871–1958)  
*Proud Woman*  
From the series *Les Fleurs du Mal*  
1938  
Color aquatint and liftground etching with etching and roulette  
BMA 2018.21

Georges Rouault (French, 1871–1958)  
*Ecce Homo*  
From the series *Passion*  
1936  
Color aquatint and liftground etching with etching, roulette, and burnishing  
BMA 2018.22

Benton Spruance (American, 1904–1967)  
*Ecclesiastes, Essay IV*  
1946  
Crayon lithograph with scraping  
BMA 2018.23

**Gift of Dr. and Mrs. Jonas R. Rappeport, Baltimore, MD**

Marc Chagall (French, born Russia, 1887–1985)  
Printer: Louis Fort (French, active 20th century)  
Publisher: Tériade, Paris  
*Plate LV from the series Dead Souls*  
1948  
Etching  
BMA 2017.204

Marc Chagall (French, born Russia, 1887–1985)  
Printer: Louis Fort (French, active 20th century)  
Publisher: Tériade, Paris  
*Plate III from the series Dead Souls*  
1948  
Etching  
BMA 2017.205

**Gift of Steven Scott, Baltimore, MD**

Milton J. Burns (American, 1853–1933)  
*The Wreck of the Harpooner*  
c. 1869–1900  
Opaque watercolor  
BMA 2018.12

**Gift of Marc Wexler, Cornelius, OR**

Morgan Russell (American, 1886–1953)  
after Titian (Italian, 1477–1576)  
*Drawing after "Venus Blindfolding Cupid"*  
c. 1931  
Charcoal  
BMA 2017.195

Morgan Russell (American, 1886–1953) after Raphael [Raffaello Santi] (Italian, 1483–1520)  
*Drawing after "The Madonna del Passeggio"*  
c. 1931  
Charcoal  
BMA 2017.196

Morgan Russell (American, 1886–1953) after Pierre-Auguste Renoir (French, 1841–1919)  
*Drawing after "La Poudrerie de La Rochelle"*  
c. 1931  
Charcoal  
BMA 2017.197

Morgan Russell (American, 1886–1953)  
*Reclining Nude*  
c. 1931  
Charcoal  
BMA 2017.198

**PROMISED GIFTS**

**Collection of David Bergman and John Lessner, Baltimore, MD: Promised gifts to The Baltimore Museum of Art**

Frederika Sophia (Fré) Cohen (Dutch, 1903–1943)  
Author: Koos Vorrink (Dutch, 1891–1955)  
Publisher: Uitgave Arbeiders Jeugd-Centrale (Amsterdam)  
*Stormtij*  
1923  
Bound volume with text

- Jan Toorop (Dutch, born Indonesia, 1858–1928)  
Author: Netty Spanjaard (pseudonym of Jeannette Elias) (Dutch, 1884–1959)  
Publisher: Abrahamson & Van Straaten (Amsterdam)  
*Louise Geertsma Verheulen. Een meisjesleven*  
1900  
Bound volume with text and illustrations
- Jan Toorop (Dutch, born Indonesia, 1858–1928)  
Author: Louis [Marie–Anne] Couperus (Dutch, 1863–1923)  
Publisher: L.J. Veen (Amsterdam)  
*Babel*  
1901  
Bound volume with text
- Jan Toorop (Dutch, born Indonesia, 1858–1928)  
Author: Gerard [Bartel] Brom (Dutch, 1882–1959)  
Publisher: Het Nederlandsche Boekhuis  
*Vondels bekering*  
1907  
Bound volume with text and illustrations
- Jan Toorop (Dutch, born Indonesia, 1858–1928)  
Author: J.F. Schreiner (Dutch)  
Publisher: G. Mosmans en zoon, 's-Hertogenbosch  
*Gebed van een soldaat in den grooten wereldoorlog 1914–1919*  
1926  
Bound volume with text and illustrations
- Jan Sluijters (Dutch, 1881–1957)  
*Wendingen (Series 5, No. 2, 1923)*  
1923  
Bound volume with text
- Samuel (Mommie) Schwarz (Dutch, 1876–1942)  
*Wendingen (Series 12, No. 2, 1931)*  
1931  
Bound volume with text
- Willem Johan Cornelis Arondeus (Dutch, 1894–1943)  
*The Dutch Exhibition in Copenhagen in 1922*  
1922  
Color lithograph
- Willem Frederik ten Broek (Dutch, 1905–1948)  
*Poster for the Holland-America Line*  
1936  
Color lithograph
- Carel Adolph Lion Cachet (Dutch, 1864–1945)  
*Affiche voor de eerste Jaarbeurs te Utrecht in 1917*  
1917  
Color lithograph
- Hans Rudi Erdt (German, 1883–1925)  
*Theater Ausstellung Ausstellungshallen am Zoo*  
1910  
Color lithograph
- Franz Paul Glass (German, 1886–1967)  
*Poster for "The Six"*  
1914  
Color lithograph
- Franz Paul Glass (German, 1886–1967)  
*Vereinigte Druckereien Schuh & Cie.*  
1914  
Color lithograph
- Friedrich Heubner (German, 1886–1974)  
*Poster for "The Six"*  
1914  
Color lithograph
- Christiaan Johannes (Chris) Van Der Hoef (Dutch, 1875–1933)  
*The Usurer*  
1923  
Color lithograph
- Pieter A.H. Hofman (Dutch, 1885–1965)  
*Haagsche Kunstkring's Gravenhage*  
1917  
Color lithograph  
Sheet: 835 × 625 mm. (32 7/8 × 24 5/8 in.)
- Richard Nicolaas Roland Holst (Dutch, 1868–1938)  
*Marsyas. Mythische Komedie van Balthazar Verhagen*  
1910  
Color lithograph
- Richard Nicolaas Roland Holst (Dutch, 1868–1938)  
*Raden van de Arbeid*  
c. 1920  
Color lithograph
- Julius Klinger (Austrian, 1876–1942)  
*Poster for the Mohring Chandelier Factory*  
1909  
Color lithograph
- Nicolaas Petrus de Koo (Dutch, 1881–1960)  
*Indonesie - "Zypendaal", Arnhem 11 juni tot 28 juli tentoonstelling Oost & West Indie 1928*  
1928  
Color lithograph
- František Kupka (Czech, active in France, 1871–1957)  
*Poster for "L'Homme et la terre"*  
c. 1909  
Color lithograph
- Koloman Moser (Austrian, 1868–1918)  
*The Art Treasury*  
From the journal "*Ver Sacrum*",  
February 1898  
1898  
Color lithograph
- Johan Thorn Prikker (Dutch, 1868–1932)  
*Poster for the Dutch Art Exhibition at the Kaiser Wilhelm Museum in Krefeld*  
1903  
Color lithograph
- Cornelis Rol (Dutch, 1877–1963)  
*Internationle Graphische Tentoonstelling Amsterdam*  
1913  
Color lithograph
- Ruth Starr Rose (American, 1887–1965)  
*Joshua Fit de Battle of Jericho*  
1943  
Lithograph
- Ruth Starr Rose (American, 1887–1965)  
*Couldn't hear nobody pray*  
1943  
Lithograph
- Ruth Starr Rose (American, 1887–1965)  
*This Train is Bound for Glory*  
1951  
Color lithograph



Samuel (Mommie) Schwarz (Dutch, 1876–1942)  
*Als de jonge wijn bloeit Stadsschouwburg*  
1922  
Color lithograph

Samuel (Mommie) Schwarz (Dutch, 1876–1942)  
*Blanke ballast. Het nieuwe Ned. Toneel. Ar. Leider Louis Saa*  
1925  
Color lithograph

Max Schwarzer (German, 1882–1955)  
*Ausstellungen, Industrie, Poster "Gas, seine Herstellung und Verwendung in Gemeinschaft, Haus und Industrie", München, Juli / August 1914*  
1914  
Color lithograph

Max Schwarzer (German, 1882–1955)  
*Zur Stadt Wien, Wiener Kaffeehaus*  
1915  
Color lithograph

Jan Sluijters (Dutch, 1881–1957)  
*Arti et Amicitiae Amsterdam Tentoonstelling*  
1918  
Color lithograph

Wim Wijnman (Dutch, 1897–1984)  
*Samson*  
c. 1920  
Lithograph

Lambertus Zwiens (Dutch, 1871–1953)  
*Decorative Designs of L. Zwiens, architect MBVA*  
1917  
Color lithograph

**Collection of Susan B. Katzenberg, Baltimore, MD: Promised gift to The Baltimore Museum of Art**  
Brassaï (French, born Hungary, 1899–1984)  
*Juan-les-Pins, Folies-Bergère*  
c. 1932, printed 1970s  
Gelatin silver print

**PROMISED GIFT (RESTRICTED)**  
**Promised gift of Clair Zamoiski Segal and Thomas H. Segal**

Harry Callahan (American, 1912–1999)  
*Eleanor and Barbara, Chicago*  
1954  
Gelatin silver print

Harry Callahan (American, 1912–1999)  
*Eleanor and Barbara, Chicago*  
1954  
Gelatin silver print

Harry Callahan (American, 1912–1999)  
*Eleanor and Barbara, Chicago*  
1954  
Gelatin silver print

Harry Callahan (American, 1912–1999)  
*Eleanor and Barbara, Chicago*  
1954  
Gelatin silver print

Harry Callahan (American, 1912–1999)  
*Eleanor and Barbara, Chicago*  
1954  
Gelatin silver print

Harry Callahan (American, 1912–1999)  
*Eleanor and Barbara, Chicago*  
1954  
Gelatin silver print

Harry Callahan (American, 1912–1999)  
*Eleanor and Barbara, Chicago*  
1954  
Gelatin silver print

## **TEXTILES**

### **ACCESSIONED BY PURCHASE**

#### **Alice and Franklin Cooley Fund**

Stephen Towns (American, born 1980)  
*Special Child*

From the series *Story Quilts*  
2016  
Natural and synthetic fabric, nylon tulle, polyester and cotton thread, metallic thread, Thermoweb, cotton/polyester blend batting, crystal glass beads, resin and metal buttons  
BMA 2017.144

### **ACCESSIONED BY GIFT**

#### **Gift of the Artist**

Annet Couwenberg (American, born the Netherlands, 1950)  
*Puff 3*  
2014  
Laser cut and origami folded buckram, wood, nails  
BMA 2017.408

#### **Gift of Margaret de Cuevas, Baltimore, MD**

*Black Silk Dress with Beaded Abstract Design*  
c. 1925  
France or United States  
Silk, beads, metal snaps  
BMA 2017.409

*Black Silk Dress with Beaded Floral Design*  
1920–1940  
France or United States  
Silk, beads, metal snaps and hook  
BMA 2017.410

**Gift of William R. and Sona K. Johnston, Baltimore, MD**  
*Panel of Woven Silk with Castle, Peacock Feathers, and Floral Motifs*  
1730–1740  
Italy, Netherlands, or France  
Silk, silver metallic-wrapped threads (galloon)  
BMA 2018.33

#### **Jeffrey Krauss Collection of Japanese Textiles**

*Buddhist Priest's Robe (Kesa): Seven Column Kesa with Medallions of Ho'o Bird and Kara Kusa*  
1912–1926  
Japan  
Silk, supplementary wefts of flat gold-leafed mulberry paper strips and gold-leafed mulberry paper strips wrapped around a silk thread core, silk lining, paper inner lining  
BMA 2017.411

*Buddhist Priest's Robe (Kesa): Seven Column Kesa with Branches, Bamboo, and Chrysanthemums.*  
1912–1926  
Japan  
Silk, ivory ring  
BMA 2017.412

*Woman's Summer Kimono with Double Kasuri Pattern*  
1900–1941  
Japan  
Retailer: Ichiroya (Kimono Flea Market)  
Ramie or hemp (asa); probably cotton partial lining  
BMA 2017.413

*Woman's Haori (Jacket) with Kumo (Spider Web) Shibori*  
1900–1940  
Japan  
Silk  
BMA 2017.414

*Woman's Haori (Jacket) with Geometric Designs*  
1940s  
Japan  
Silk  
BMA 2017.415

*Woman's Haori (Jacket) with Abstract Tree Design*  
1900–1950  
Japan  
Silk  
BMA 2017.416

*Woman's Nagajuban (Under Kimono) in Asanoha (Hemp Leaf) Pattern*  
1960–1969  
Japan  
Silk; cotton or possibly hemp lining  
BMA 2017.417

*Fisherman's Celebratory Kimono*  
1900–1941  
Japan  
Ichiroya (Kimono Flea Market)  
Cotton  
BMA 2017.418

*Man's Haori (Jacket) with Woodgrain Shibori and Bonji Character*  
1926–1989  
Japan  
Silk  
BMA 2017.419

*Man's Nagajuban (Under Kimono) with Treasure Ships*  
1926–1989  
Japan  
Silk  
BMA 2017.420

*Man's Nagajuban (Under Kimono) with Driving Rain Pattern*  
1900–1950  
Japan  
Silk, cotton  
BMA 2017.421

*Egasuri (Picture Kasuri) Fabric with Lightning Motifs*  
1900–1940  
Japan  
Cotton  
BMA 2017.422

*Partial Length of Kimono Silk, Kyo-bingata (Kyoto Bingata)*  
1900–1950  
Kyoto, Japan  
Silk, dye  
BMA 2017.423

*Bolt of Shibori-Dyed Silk for Haori*  
1930–1960  
Japan  
Silk  
BMA 2017.424

*Length of Niko-Niko (Pseudo Shibori) Fabric with Sports Imagery*  
1950–1959  
Japan  
Cotton  
BMA 2017.425

*Niko-Niko Fabric Sample Book*  
1930–1965  
Japan  
Cotton, paper/board, gilding  
BMA 2017.426

*Kimono Kasuri Fabric Sample Book*  
1900–1950  
Japan  
Paper, silk, cotton, ink  
BMA 2017.427

#### **Gift of Sara W. Levi, Baltimore, MD**

Louise B. Wheatley (American, born 1947)  
*Wall Hanging: Fruits of the Spirit*  
c. 1991  
Wool, silk, cotton  
BMA 2017.143

#### **Gift of Michael and Anis Merson, Baltimore, MD**

*Embroidered Jacket with Phoenix*  
c. 1925  
China  
Retailer: Helen Burton (American, 1891–1971)  
Retailer: Camel's Bell Shop (Chinese, 1922–1943)  
Unidentified ground; cotton or silk embroidery threads, gold-metallic wrapped embroidery threads  
BMA 2017.428

#### **Gift of the Estate of Vivien M. Thweatt**

Mary Winifred Hoskins (American, 1804–1861)  
*Needlework Picture: Sacrifice of Isaac*  
1814  
Baltimore, Maryland, United States  
Silk, linen, wool and silk embroidery threads, watercolor  
BMA 2017.429

#### **PROMISED GIFT**

#### **Collection of Nancy L. Dorman and Stanley Mazaroff, Baltimore, MD: Promised gift to The Baltimore Museum of Art**

Stephen Towns (American, born 1980)  
Quilt no. 6 in series *Story Quilts: The March to Jerusalem*  
2018  
Natural and synthetic fabric, nylon tulle, polyester and cotton thread, Thermoweb, cotton/polyester blend batting, crystal glass beads

# FINANCIAL REPORT

---

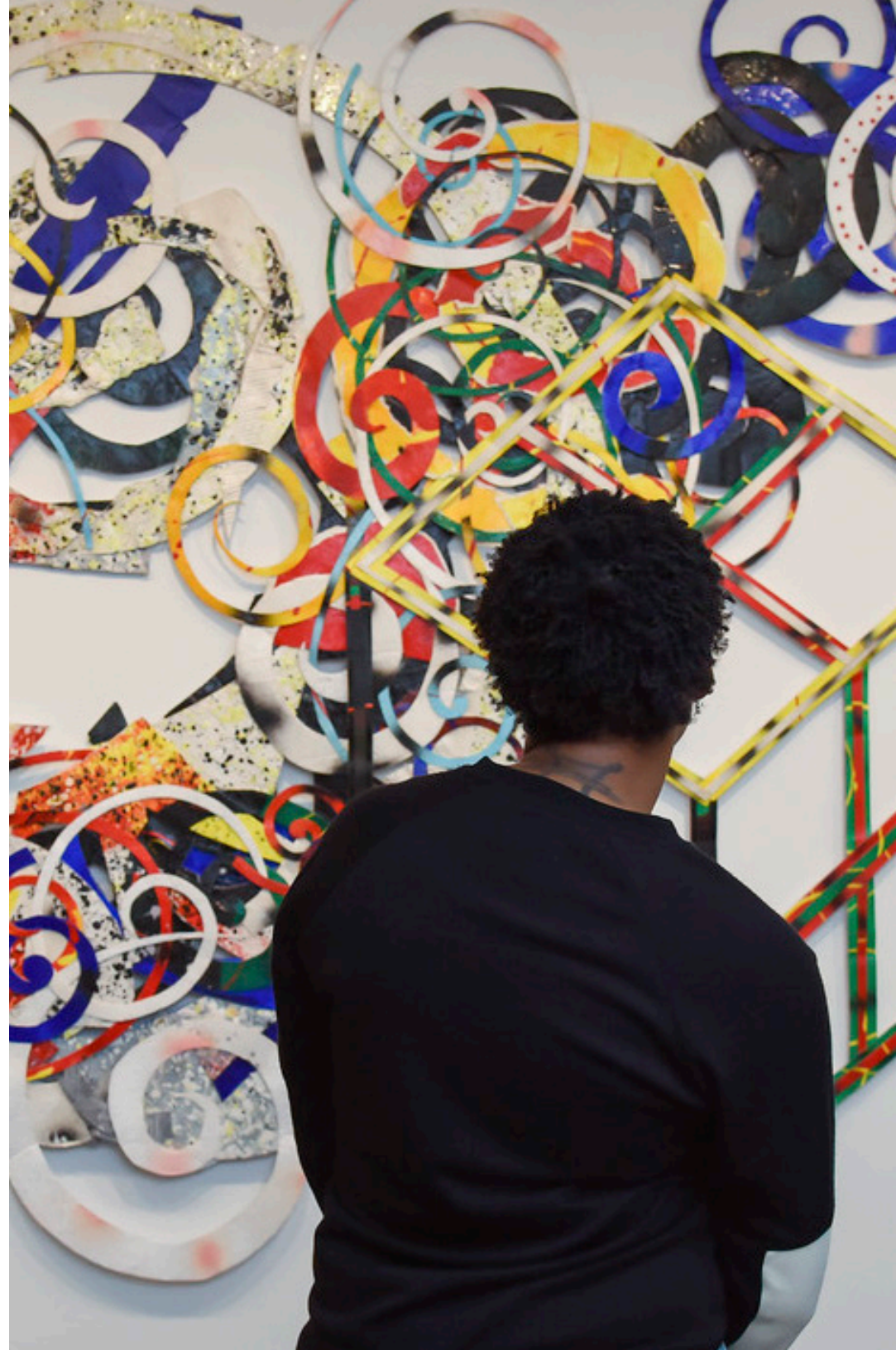
## **STRONG FISCAL MANAGEMENT**

The BMA ended fiscal year 2018 with a balanced budget thanks to our generous donors and Members, the dedicated leadership of the Board of Trustees, and the resourceful Museum staff. Through their support we are able to realize an extraordinary range of outstanding artistic and educational programs and free admission. This sound fiscal management reflects the continued commitment to excellence in all areas of operation so that the citizens of Baltimore and the State of Maryland, as well as cultural tourists, can continue to enjoy and benefit from this wonderful institution. We are very grateful for everyone's generous support of the BMA and their dedication to its vibrant future.

CLAIR ZAMOISKI SEGAL, CHAIR OF THE BOARD OF TRUSTEES

CHRISTOPHER BEDFORD, DOROTHY WAGNER WALLIS DIRECTOR

CHRISTINE DIETZE, CHIEF OPERATING OFFICER

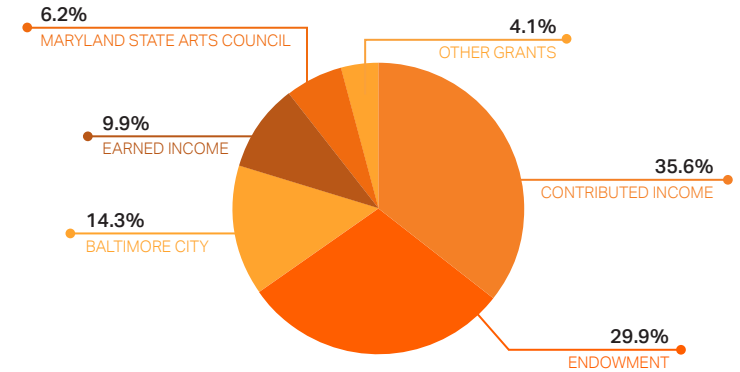




# OPERATING ACTIVITY

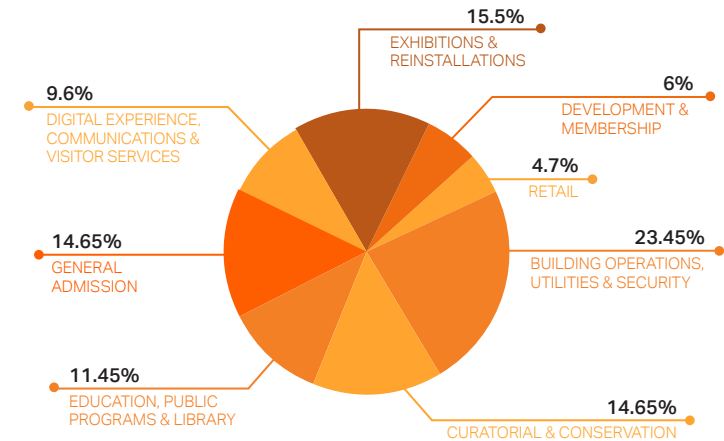
## TOTAL OPERATING REVENUE

Contributed Income	\$ 5,582,269	35.6%
Endowment	\$ 4,700,721	29.9%
Baltimore City	\$ 2,243,168	14.3%
Earned Income	\$ 1,556,584	9.9%
Maryland State Arts Council	\$ 969,159	6.2%
Other Grants	\$ 645,435	4.1%
<b>Total</b>	<b>\$ 15,697,336</b>	<b>100%</b>



## TOTAL OPERATING EXPENSES

Building Operations, Utilities & Security	\$ 3,678,275	23.45%
Curatorial & Conservation	\$ 2,295,896	14.65%
Education, Public Programs & Library	\$ 1,797,035	11.45%
General Admission	\$ 2,303,228	14.65%
Digital Experience, Communications & Visitor Services	\$ 1,507,491	9.6%
Exhibitions & Reinstallations	\$ 2,428,752	15.5%
Development & Membership	\$ 940,721	6%
Retail	\$ 734,491	4.7%
<b>Total</b>	<b>\$ 15,685,889</b>	<b>100%</b>



# STATEMENT OF FINANCIAL POSITION

<b>ASSETS</b>	<b>FY 2018 6/30/18</b>	<b>FY 2017 6/30/17</b>
<b>CURRENT ASSETS</b>		
Cash and Cash Equivalents	\$ 2,510,009	\$507,400
Contributions and Grants Receivable	\$ 3,899,696	\$ 2,742,789
Accounts Receivable	\$ 2,788,460	\$ 543,732
Inventories	\$ 288,214	\$ 273,149
Other Current Assets	\$ 1,599,235	\$ 1,606,004
Total Current Assets	\$ 11,085,614	\$ 5,673,074
Investments	\$ 119,318,120	\$ 106,539,043
Contributions Receivable, net	\$ 2,461,456	\$ 531,644
Property and Equipment, net	\$ 4,414,014	\$ 5,975,463
Interest Rate Swap	\$ 5,262	
Total Assets	\$ 137,284,466	\$ 118,719,224
<b>LIABILITIES AND NET ASSETS</b>		
<b>CURRENT LIABILITIES</b>		
Accounts Payable & Accrued Expenses	\$ 1,225,267	\$ 1,306,790
Payables Under Split Interest Agreements	\$ 160,567	\$ 160,557
Deferred Revenue	\$ 104,399	\$ 110,184
Bonds Payable, Current Portion	\$ 238,784	\$ 232,651
Line of Credit Payable	\$-	\$ 1,150,000
Total Current Liabilities	\$ 1,729,017	\$ 1,810,182
<b>NON-CURRENT LIABILITIES</b>		
Interest Rate Swap	\$ 31,326	
Bonds Payable, Long Term	\$ 3,318,978	\$ 5,556,236
Line of Credit Payable, Long Term		\$ 3,250,000
Payables Under Split Interest Agreements	\$ 949,787	\$ 1,009,030
Total Liabilities	\$ 5,997,782	\$ 8,406,774
<b>NET ASSETS</b>		
Unrestricted	\$ 21,859,321	\$ 21,657,123
Temporarily Restricted	\$ 63,006,195	\$ 46,636,447
Permanently Restricted	\$ 46,421,168	\$ 42,018,880
Total Net Assets	\$ 131,286,684	\$ 110,312,450
Total Liabilities and Net Assets	\$ 137,284,466	\$ 118,719,224